



[Go to Product page](#)

Datasheet for ABIN5539755  
**anti-SLC26A1 antibody (C-Term)**

1 Image

Overview

Quantity:	100 µg
Target:	SLC26A1
Binding Specificity:	C-Term
Reactivity:	Human
Host:	Goat
Clonality:	Polyclonal
Conjugate:	This SLC26A1 antibody is un-conjugated
Application:	Immunohistochemistry (IHC), ELISA

Product Details

Purpose:	SLC26A1 / SAT-1
Sequence:	QTARARHREL EATD
Isotype:	IgG
Specificity:	This antibody is expected to recognize reported isoform a (NP_071325.2) only. Reported variants represent identical protein: NP_998778.1, NP_071325.2
Cross-Reactivity:	Human
Purification:	Purified from goat serum by ammonium sulphate precipitation followed by antigen affinity chromatography using the immunizing peptide.
Grade:	Verified

## Target Details

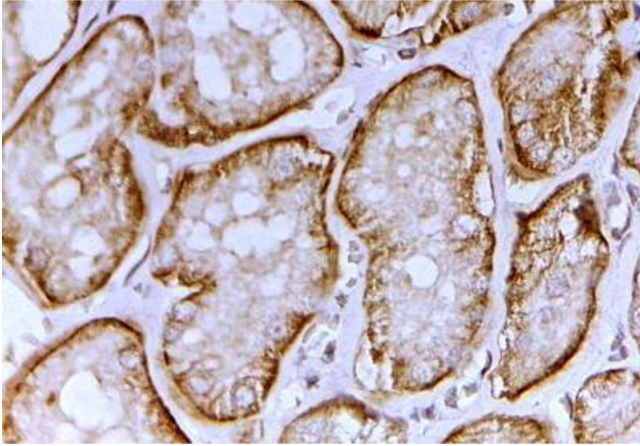
Target:	SLC26A1
Alternative Name:	SLC26A1 ( <a href="#">SLC26A1 Products</a> )
Background:	SLC26A1, solute carrier family 26 (sulfate transporter), member 1, EDM4, SAT-1, SAT1, sulfate anion transporter AT1, sulfate anion transporter 1, sulfate/anion transporter SAT-1 protein
Gene ID:	10861
NCBI Accession:	<a href="#">NP_071325</a> , <a href="#">NP_602297</a>
Pathways:	<a href="#">Glycosaminoglycan Metabolic Process</a> , <a href="#">Ribonucleoside Biosynthetic Process</a> , <a href="#">Dicarboxylic Acid Transport</a>

## Application Details

Application Notes:	Immunohistochemistry: In paraffin embedded Human Kidney shows strong basal membrane staining in convoluted tubules. Recommended concentration, 2-4 µg/mL. Peptide ELISA: antibody detection limit dilution 1:4000.
Restrictions:	For Research Use only

## Handling

Format:	Liquid
Concentration:	0.5 mg/mL
Buffer:	Supplied at 0.5 mg/mL in Tris saline, 0.02 % sodium azide, pH 7.3 with 0.5 % bovine serum albumin.
Preservative:	Sodium azide
Precaution of Use:	This product contains Sodium azide: a POISONOUS AND HAZARDOUS SUBSTANCE which should be handled by trained staff only.
Handling Advice:	Minimize freezing and thawing.
Storage:	-20 °C
Storage Comment:	Aliquot and store at -20°C, with minimal freeze/thawing. A working aliquot may be refrigerated at 4°C for a few weeks and still remain viable.



### Immunohistochemistry

**Image 1.** ABIN5539755 (2µg/ml) staining of paraffin embedded Human Kidney. Steamed antigen retrieval with citrate buffer pH 6, HRP-staining.