



[Go to Product page](#)

Datasheet for ABIN5539769
anti-KLF2 antibody (N-Term)

1 Image

Overview

Quantity:	100 µg
Target:	KLF2
Binding Specificity:	N-Term
Reactivity:	Human
Host:	Goat
Clonality:	Polyclonal
Conjugate:	This KLF2 antibody is un-conjugated
Application:	Western Blotting (WB), ELISA

Product Details

Purpose:	KLF2 / LKLF
Sequence:	ALSEPILPSF ST
Isotype:	IgG
Predicted Reactivity:	Human, Mouse, Rat, Dog, Pig, Cow
Purification:	Purified from goat serum by ammonium sulphate precipitation followed by antigen affinity chromatography using the immunizing peptide.
Grade:	Verified

Target Details

Target:	KLF2
---------	------

Target Details

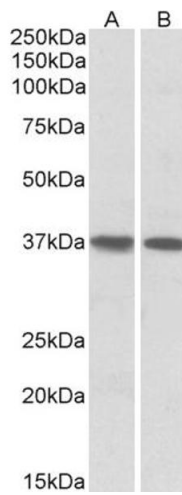
Alternative Name:	KLF2 (KLF2 Products)
Background:	KLF2, Kruppel-like factor 2 (lung), LKLF, Kruppel-like factor LKLF, lung Kruppel-like zinc finger transcription factor
Gene ID:	10365
NCBI Accession:	NP_057354

Application Details

Application Notes:	DS WB Results: Approx 37 kDa band observed in Human Heart and Lung lysates (calculated MW of 37.4 kDa according to NP_057354.1). Recommended concentration: 1-3 µg/mL. Primary incubation was 1 hour. Preliminary testing was unsuccessful on Rat Brain and Mouse Heart for this particular batch. Peptide ELISA: antibody detection limit dilution 1:16000.
Restrictions:	For Research Use only

Handling

Format:	Liquid
Concentration:	0.5 mg/mL
Buffer:	Supplied at 0.5 mg/mL in Tris saline, 0.02 % sodium azide, pH 7.3 with 0.5 % bovine serum albumin.
Preservative:	Sodium azide
Precaution of Use:	This product contains Sodium azide: a POISONOUS AND HAZARDOUS SUBSTANCE which should be handled by trained staff only.
Handling Advice:	Minimize freezing and thawing.
Storage:	-20 °C
Storage Comment:	Aliquot and store at -20°C, with minimal freeze/thawing. A working aliquot may be refrigerated at 4°C for a few weeks and still remain viable.



Western Blotting

Image 1. ABIN5539769 (1 μ g/ml) staining of Human Heart (A) and Lung (B) lysates (35 μ g protein in RIPA buffer). Detected by chemiluminescence.