

Datasheet for ABIN5539776
anti-ABHD14B antibody (AA 188-200)[Go to Product page](#)

1 Image

Overview

Quantity:	100 µg
Target:	ABHD14B
Binding Specificity:	AA 188-200
Reactivity:	Human, Rat, Mouse
Host:	Goat
Clonality:	Polyclonal
Conjugate:	This ABHD14B antibody is un-conjugated
Application:	ELISA, Western Blotting (WB)

Product Details

Purpose:	ABHD14B (aa188-200)
Sequence:	HPCYLDKPEE WHT
Isotype:	IgG
Specificity:	Reported variants represent identical protein: NP_116139.1, NP_001139786.1. This antibody is expected to NOT cross-react with ABHD14A.
Cross-Reactivity:	Cow, Dog, Human, Mouse, Pig, Rat
Purification:	Purified from goat serum by ammonium sulphate precipitation followed by antigen affinity chromatography using the immunizing peptide.
Grade:	Verified

Target Details

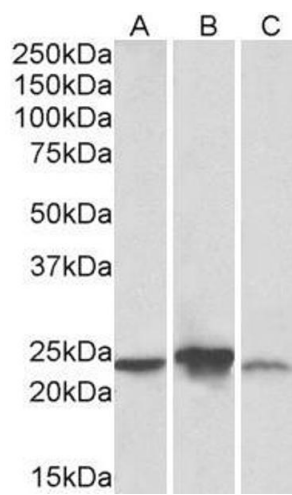
Target:	ABHD14B
Alternative Name:	ABHD14B (ABHD14B Products)
Background:	ABHD14B, abhydrolase domain containing 14B, CIB, MGC15429, CCG1-interacting factor B, OTTHUMP00000212466, OTTHUMP00000212467, OTTHUMP00000212469, OTTHUMP00000229616, abhydrolase domain-containing protein 14B, cell cycle gene 1-interacting factor B
Gene ID:	84836, 76491, 300983
NCBI Accession:	NP_116139

Application Details

Application Notes:	Western Blot: Approx 24 kDa band observed in Human, Mouse, and Rat Liver lysates (calculated MW of 22.3 kDa according to NP_116139.1). Recommended concentration: 0.3-1 µg/mL. Peptide ELISA: antibody detection limit dilution 1:64000.
Restrictions:	For Research Use only

Handling

Format:	Liquid
Concentration:	0.5 mg/mL
Buffer:	Supplied at 0.5 mg/mL in Tris saline, 0.02 % sodium azide, pH 7.3 with 0.5 % bovine serum albumin.
Preservative:	Sodium azide
Precaution of Use:	This product contains Sodium azide: a POISONOUS AND HAZARDOUS SUBSTANCE which should be handled by trained staff only.
Handling Advice:	Minimize freezing and thawing.
Storage:	-20 °C
Storage Comment:	Aliquot and store at -20°C, with minimal freeze/thawing. A working aliquot may be refrigerated at 4°C for a few weeks and still remain viable.



Western Blotting

Image 1. ABIN5539776 (0.3µg/ml) staining of Human (A), Mouse(B), Rat (C) Liver lysate (35µg protein in RIPA buffer). Primary incubation was 1 hour. Detected by chemiluminescence.