

Datasheet for ABIN5539783

anti-14-3-3 sigma/SFN antibody (Internal Region) (Biotin)



[Go to Product page](#)

1 Image

Overview

Quantity:	100 µg
Target:	14-3-3 sigma/SFN (SFN)
Binding Specificity:	Internal Region
Reactivity:	Human, Mouse
Host:	Goat
Clonality:	Polyclonal
Conjugate:	This 14-3-3 sigma/SFN antibody is conjugated to Biotin
Application:	Western Blotting (WB), Immunohistochemistry (IHC), ELISA

Product Details

Purpose:	14-3-3 sigma / Stratifin, Biotinylated
Sequence:	CDLHTLSEDS YKDST.
Isotype:	IgG
Cross-Reactivity:	Dog, Human, Mouse, Pig, Rat
Purification:	Purified from goat serum by ammonium sulphate precipitation followed by antigen affinity chromatography using the immunizing peptide.
Grade:	Verified

Target Details

Target:	14-3-3 sigma/SFN (SFN)
---------	------------------------

Target Details

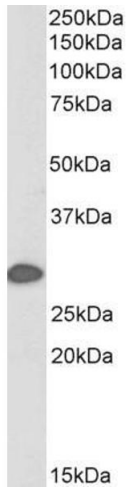
Alternative Name:	SFN (SFN Products)
Background:	SFN, stratifin, YWHAS, 14-3-3 sigma, epithelial cell marker protein 1
Gene ID:	2810, 55948, 313017
NCBI Accession:	NP_006133
Pathways:	p53 Signaling , Myometrial Relaxation and Contraction

Application Details

Application Notes:	Western Blot: Approx 28 kDa band observed in Mouse Skin lysates (calculated MW of 27.7 kDa according to Mouse NP_061224.2). See non-biotinylated parental product's datasheet for further QC data. Recommended concentration: 0.1-0.3 µg/mL. Peptide ELISA: antibody detection limit dilution 1:16000.
Restrictions:	For Research Use only

Handling

Format:	Liquid
Concentration:	0.5 mg/mL
Buffer:	Supplied at 0.5 mg/mL in Tris saline, 0.02 % sodium azide, pH 7.3 with 0.5 % bovine serum albumin.
Preservative:	Sodium azide
Precaution of Use:	This product contains Sodium azide: a POISONOUS AND HAZARDOUS SUBSTANCE which should be handled by trained staff only.
Handling Advice:	Minimize freezing and thawing.
Storage:	-20 °C
Storage Comment:	Aliquot and store at -20°C, with minimal freeze/thawing. A working aliquot may be refrigerated at 4°C for a few weeks and still remain viable.



Western Blotting

Image 1. Biotinylated ABIN5539783 (0.1µg/ml) staining of Mouse Skin lysate (35µg protein in RIPA buffer), exactly mirroring its parental non-biotinylated product. Primary incubation was 1 hour. Detected by chemiluminescence, using streptavidin-HRP and using NAP blocker as a substitute for skimmed milk.