

Datasheet for ABIN5539801
anti-ESR2 antibody (AA 417-428)[Go to Product page](#)

3 Images

Overview

Quantity:	100 µg
Target:	ESR2
Binding Specificity:	AA 417-428
Reactivity:	Human
Host:	Goat
Clonality:	Polyclonal
Conjugate:	This ESR2 antibody is un-conjugated
Application:	Western Blotting (WB), ELISA, Immunofluorescence (IF)

Product Details

Purpose:	Estrogen receptor beta (aa417-428)
Sequence:	TQDADSSRKL AH
Isotype:	IgG
Specificity:	This antibody is expected to recognize all reported isoforms (NP_001428.1, NP_001035365.1, NP_001201831.1, NP_001201832.1). Reported variants represent identical protein: NP_001035365.1, NP_001035366.1
Cross-Reactivity:	Human
Purification:	Purified from goat serum by ammonium sulphate precipitation followed by antigen affinity chromatography using the immunizing peptide.
Grade:	Verified

Target Details

Target:	ESR2
Alternative Name:	ESR2 (ESR2 Products)
Background:	ESR2, estrogen receptor 2 (ER beta), ER-BETA, ESR-BETA, ESRB, ESTRB, Erb, NR3A2, OTTHUMP00000180647, estrogen nuclear receptor beta variant a, estrogen nuclear receptor beta variant b, estrogen receptor beta, estrogen receptor beta 4, nuclear receptor sub
Gene ID:	2100
NCBI Accession:	NP_001428 , NP_001035365 , NP_001201831 , NP_001201832
Pathways:	Nuclear Receptor Transcription Pathway , EGFR Signaling Pathway , Intracellular Steroid Hormone Receptor Signaling Pathway , Steroid Hormone Mediated Signaling Pathway , Regulation of Intracellular Steroid Hormone Receptor Signaling

Application Details

Application Notes:	Western Blot: Approx 50 kDa band observed in Human Placenta lysates (calculated MW of 53.0 kDa according to NP_001035366.1). Recommended concentration: 1-3 µg/mL. Primary incubation was 1 hour. Peptide ELISA: antibody detection limit dilution 1:128000.
Comment:	Immunofluorescence: Strong expression of the protein seen in the nucleus of HeLa and MCF7 cells. Recommended concentration: 10µg/ml.
Restrictions:	For Research Use only

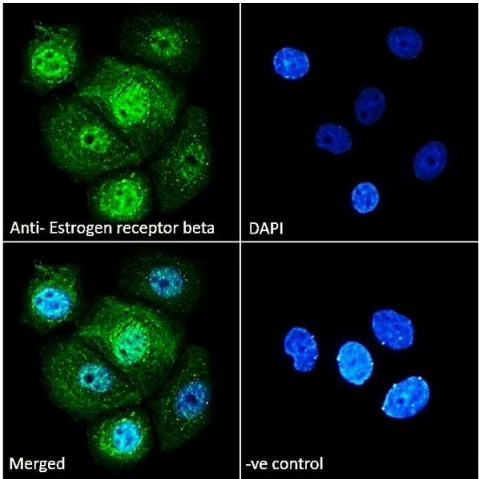
Handling

Format:	Liquid
Concentration:	0.5 mg/mL
Buffer:	Supplied at 0.5 mg/mL in Tris saline, 0.02 % sodium azide, pH 7.3 with 0.5 % bovine serum albumin.
Preservative:	Sodium azide
Precaution of Use:	This product contains Sodium azide: a POISONOUS AND HAZARDOUS SUBSTANCE which should be handled by trained staff only.
Handling Advice:	Minimize freezing and thawing.
Storage:	-20 °C

Handling

Storage Comment: Aliquot and store at -20°C, with minimal freeze/thawing. A working aliquot may be refrigerated at 4°C for a few weeks and still remain viable.

Images



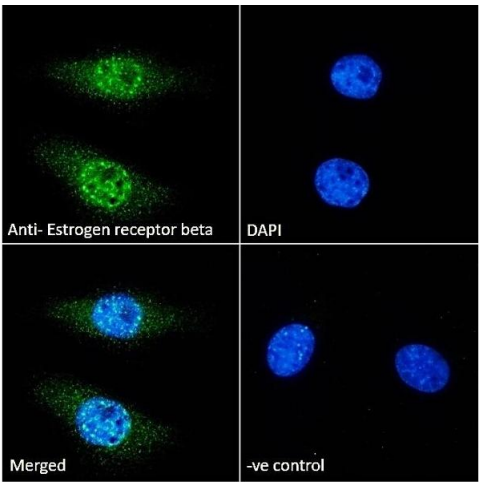
Immunofluorescence

Image 1. ABIN5539801 Immunofluorescence analysis of paraformaldehyde fixed MCF7 cells, permeabilized with 0.15 % Triton. Primary incubation 1hr (10 µg/mL) followed by Alexa Fluor 488 secondary antibody (2 µg/mL), showing strong nuclear and weak cytoplasmic staining. The



Western Blotting

Image 2. ABIN5539801 (1µg/ml) staining of Human Placenta lysate (35µg protein in RIPA buffer). Primary incubation was 1 hour. Detected by chemiluminescence.



Immunofluorescence

Image 3. ABIN5539801 Immunofluorescence analysis of paraformaldehyde fixed HeLa cells, permeabilized with 0.15 % Triton. Primary incubation 1hr (10 µg/mL) followed by Alexa Fluor 488 secondary antibody (2 µg/mL), showing nuclear staining. The nuclear stain is DAPI (blue)