

Datasheet for ABIN5539806
anti-CALB1 antibody (Internal Region)[Go to Product page](#)

4 Images

Overview

Quantity:	100 µg
Target:	CALB1
Binding Specificity:	Internal Region
Reactivity:	Human, Rat
Host:	Goat
Clonality:	Polyclonal
Conjugate:	This CALB1 antibody is un-conjugated
Application:	Western Blotting (WB), Immunohistochemistry (IHC), ELISA

Product Details

Purpose:	calbindin D28
Sequence:	KTFVDQYGQR DDGK
Isotype:	IgG
Specificity:	Immunizing peptide overlaps EF hand 2, but not any calcium binding site.
Cross-Reactivity:	Cow, Dog, Human, Pig, Rat
Purification:	Purified from goat serum by ammonium sulphate precipitation followed by antigen affinity chromatography using the immunizing peptide.
Grade:	Verified

Target Details

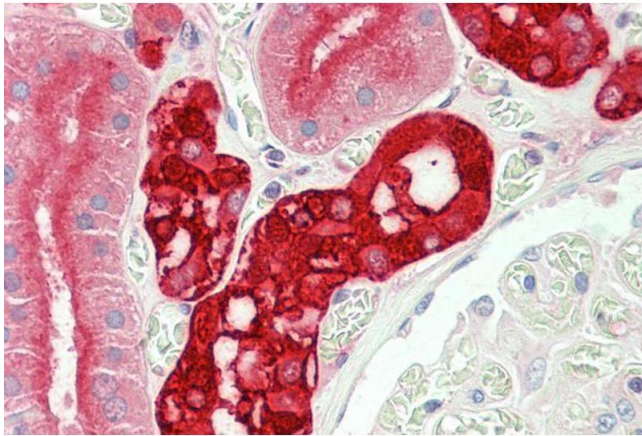
Target:	CALB1
Alternative Name:	CALB1 (CALB1 Products)
Background:	CALB1, calbindin 1, 28 kDa, CALB, D-28K, OTTHUMP00000166027, OTTHUMP00000225441, RTVL-H protein, calbindin, calbindin 1, (28kD), calbindin D28, vitamin D-dependent calcium-binding protein, avian-type
Gene ID:	793, 83839
NCBI Accession:	NP_004920

Application Details

Application Notes:	<p>Immunohistochemistry: Paraffin embedded Human Kidney. Recommended concentration: 5-7 µg/mL.</p> <p>Western Blot: Approx. 26 kDa band observed in Human and Rat Kidney lysates and in Rat Brain lysates (calculated MW of 30.0 kDa according to Human NP_004920.1 and Rat NP_114190.1). The observed molecular weight is routinely observed by other sources. Recomm</p> <p>Peptide ELISA: antibody detection limit dilution 1:128000.</p>
Restrictions:	For Research Use only

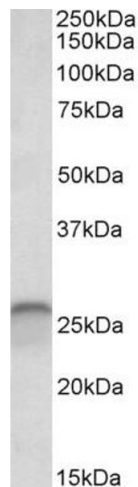
Handling

Format:	Liquid
Concentration:	0.5 mg/mL
Buffer:	Supplied at 0.5 mg/mL in Tris saline, 0.02 % sodium azide, pH 7.3 with 0.5 % bovine serum albumin.
Preservative:	Sodium azide
Precaution of Use:	This product contains Sodium azide: a POISONOUS AND HAZARDOUS SUBSTANCE which should be handled by trained staff only.
Handling Advice:	Minimize freezing and thawing.
Storage:	-20 °C
Storage Comment:	Aliquot and store at -20°C, with minimal freeze/thawing. A working aliquot may be refrigerated at 4°C for a few weeks and still remain viable.



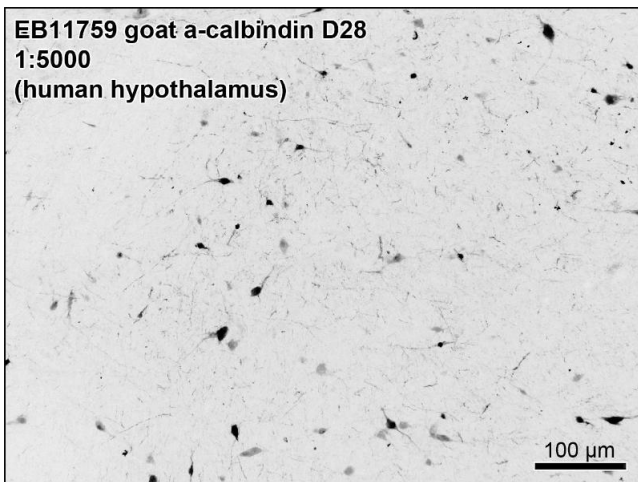
Immunohistochemistry

Image 1. ABIN5539806 (5µg/ml) staining of paraffin embedded Human Kidney. Steamed antigen retrieval with citrate buffer pH 6, AP-staining.



Western Blotting

Image 2. ABIN5539806 (0.03µg/ml) staining of Human Cerebellum lysate (35µg protein in RIPA buffer). Detected by chemiluminescence.



Immunohistochemistry

Image 3. ABIN5539806 (0.1µg/ml) staining of PFA-perfused cryosection of Human Hypothalamus. Antigen retrieval with citrate buffer pH 6 at 80C for 30min, HRP-staining with Ni-DAB after Biotin-SP-antigoat amplification. Data obtained by Prof. Erik Hrabovszky, Inst, Exp,

Please check the [product details page](#) for more images. Overall 4 images are available for ABIN5539806.