

Datasheet for ABIN5539814  
**anti-AIMP1 antibody (AA 137-149)**[Go to Product page](#)

## 2 Images

## Overview

Quantity:	100 µg
Target:	AIMP1
Binding Specificity:	AA 137-149
Reactivity:	Human
Host:	Goat
Clonality:	Polyclonal
Conjugate:	This AIMP1 antibody is un-conjugated
Application:	Western Blotting (WB), ELISA, Immunohistochemistry (IHC)

## Product Details

Purpose:	AIMP1 / SCYE1 (aa137-149)
Sequence:	KQQSIAGSAD SKP
Isotype:	IgG
Specificity:	This antibody is expected to recognize both reported isoforms (NP_004748.2, NP_001135888.1). Reported variants represent identical protein: NP_004748.2, NP_001135887.1
Cross-Reactivity:	Dog, Human, Pig
Purification:	Purified from goat serum by ammonium sulphate precipitation followed by antigen affinity chromatography using the immunizing peptide.
Grade:	Verified

## Target Details

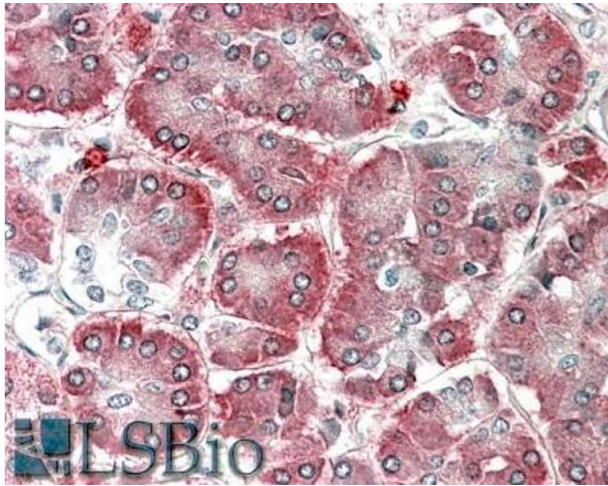
Target:	AIMP1
Alternative Name:	AIMP1 ( <a href="#">AIMP1 Products</a> )
Background:	AIMP1, aminoacyl tRNA synthetase complex-interacting multifunctional protein 1, EMAP2, EMAPII, HLD3, SCYE1, p43, ARS-interacting multifunctional protein 1, OTTHUMP00000161877, OTTHUMP00000161878, OTTHUMP00000219673, aminoacyl tRNA synthase complex-interac
Gene ID:	9255
NCBI Accession:	<a href="#">NP_004748</a> , <a href="#">NP_001135888</a>

## Application Details

Application Notes:	<p>Immunohistochemistry: In paraffin embedded Human Pancreas shows staining in the cytoplasm towards the alpha cells periphery. Recommended concentration, 5-10 µg/mL.</p> <p>Western Blot: Approx 37 kDa band observed in Human Lymph Node and Uterus lysates (calculated MW of 37.0 kDa according to NP_001135887.1). Recommended concentration: 0.1-0.3 µg/mL.</p> <p>Peptide ELISA: antibody detection limit dilution 1:32000.</p>
Restrictions:	For Research Use only

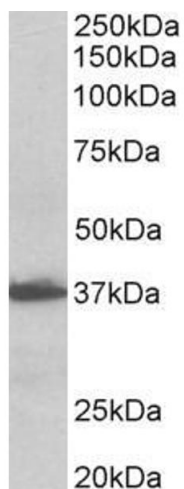
## Handling

Format:	Liquid
Concentration:	0.5 mg/mL
Buffer:	Supplied at 0.5 mg/mL in Tris saline, 0.02 % sodium azide, pH 7.3 with 0.5 % bovine serum albumin.
Preservative:	Sodium azide
Precaution of Use:	This product contains Sodium azide: a POISONOUS AND HAZARDOUS SUBSTANCE which should be handled by trained staff only.
Handling Advice:	Minimize freezing and thawing.
Storage:	-20 °C
Storage Comment:	Aliquot and store at -20°C, with minimal freeze/thawing. A working aliquot may be refrigerated at 4°C for a few weeks and still remain viable.



#### Immunohistochemistry

**Image 1.** ABIN5539814 (5µg/ml) staining of paraffin embedded Human Pancreas. Steamed antigen retrieval with citrate buffer pH 6, AP-staining.



#### Western Blotting

**Image 2.** ABIN5539814 (0.1µg/ml) staining of Human Lymph Node lysate (35µg protein in RIPA buffer). Primary incubation was 1 hour. Detected by chemiluminescence.