



[Go to Product page](#)

Datasheet for ABIN5539824

anti-EPM2A antibody (Internal Region) (Biotin)

1 Image

Overview

Quantity:	100 µg
Target:	EPM2A
Binding Specificity:	Internal Region
Reactivity:	Human
Host:	Goat
Clonality:	Polyclonal
Conjugate:	This EPM2A antibody is conjugated to Biotin
Application:	Western Blotting (WB), ELISA, Immunohistochemistry (IHC)

Product Details

Purpose:	Laforin (isoform a), Biotinylated
Sequence:	EATGHTNEMK HTTD.
Isotype:	IgG
Specificity:	This antibody is expected to recognize isoform a (NP_005661.1) only.
Cross-Reactivity:	Cow, Dog, Human, Mouse, Rat
Purification:	Purified from goat serum by ammonium sulphate precipitation followed by antigen affinity chromatography using the immunizing peptide.
Grade:	Verified

Target Details

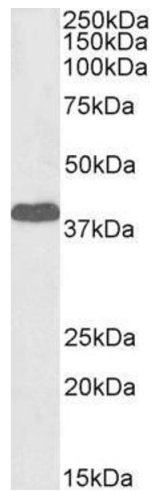
Target:	EPM2A
Alternative Name:	EPM2A (EPM2A Products)
Background:	EPM2A, epilepsy, progressive myoclonus type 2A, Lafora disease (laforin), EPM2, MELF, LAFPTPase, epilepsy, progressive myoclonus type 2, Lafora disease (laforin), glucan phosphatase, lafora PTPase
Gene ID:	7957, 13853, 680683
NCBI Accession:	NP_005661
Pathways:	Cellular Glucan Metabolic Process

Application Details

Application Notes:	Western Blot: Approx 38 kDa band observed in Human Brain (Cerebellum) lysates (calculated MW of 37.2 kDa according to NP_005661.1). See non-biotinylated parental product's datasheet for further QC data. Recommended concentration: 1-3 µg/mL. Peptide ELISA: antibody detection limit dilution 1:16000.
Restrictions:	For Research Use only

Handling

Format:	Liquid
Concentration:	0.5 mg/mL
Buffer:	Supplied at 0.5 mg/mL in Tris saline, 0.02 % sodium azide, pH 7.3 with 0.5 % bovine serum albumin.
Preservative:	Sodium azide
Precaution of Use:	This product contains Sodium azide: a POISONOUS AND HAZARDOUS SUBSTANCE which should be handled by trained staff only.
Handling Advice:	Minimize freezing and thawing.
Storage:	-20 °C
Storage Comment:	Aliquot and store at -20°C, with minimal freeze/thawing. A working aliquot may be refrigerated at 4°C for a few weeks and still remain viable.



Western Blotting

Image 1. Biotinylated ABIN5539824 (1 μ g/ml) staining of Human Cerebellum lysate (35 μ g protein in RIPA buffer), exactly mirroring its parental non-biotinylated product. Primary incubation was 1 hour. Detected by chemiluminescence, using streptavidin-HRP and using NAP blocker as a substitute for skimmed milk.