



Datasheet for ABIN5539826
anti-KDM2A antibody (AA 445-459)



[Go to Product page](#)

1 Image

Overview

Quantity:	100 µg
Target:	KDM2A
Binding Specificity:	AA 445-459
Reactivity:	Human
Host:	Goat
Clonality:	Polyclonal
Conjugate:	This KDM2A antibody is un-conjugated
Application:	Western Blotting (WB), ELISA, Immunohistochemistry (IHC)

Product Details

Purpose:	KDM2A (aa445-459)
Sequence:	PRKDRQVHLT HFELE
Isotype:	IgG
Cross-Reactivity:	Cow, Dog, Human, Mouse, Pig, Rat
Purification:	Purified from goat serum by ammonium sulphate precipitation followed by antigen affinity chromatography using the immunizing peptide.
Grade:	Verified

Target Details

Target:	KDM2A
---------	-------

Target Details

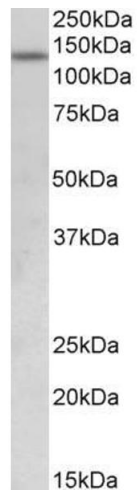
Alternative Name:	KDM2A (KDM2A Products)
Background:	KDM2A, lysine (K)-specific demethylase 2A, CXXC8, DKFZp434M1735, FBL11, FBL7, FBXL11, FLJ00115, FLJ46431, JHDM1A, KIAA1004, LILINA, SF-KDM2A, CXXC-type zinc finger protein 8, F-box and leucine-rich repeat protein 11, F-box protein FBL11, F-box protein FBL
Gene ID:	22992
NCBI Accession:	NP_036440
Pathways:	Warburg Effect

Application Details

Application Notes:	Immunohistochemistry: Paraffin embedded Human Small Intestine. Recommended concentration: 5 µg/mL. Western Blot: Approx 140 kDa band observed in Human Uterus lysates (calculated MW of 133 kDa according to NP_036440.1). Recommended concentration: 0.5-2 µg/mL. Peptide ELISA: antibody detection limit dilution 1:32000.
Restrictions:	For Research Use only

Handling

Format:	Liquid
Concentration:	0.5 mg/mL
Buffer:	Supplied at 0.5 mg/mL in Tris saline, 0.02 % sodium azide, pH 7.3 with 0.5 % bovine serum albumin.
Preservative:	Sodium azide
Precaution of Use:	This product contains Sodium azide: a POISONOUS AND HAZARDOUS SUBSTANCE which should be handled by trained staff only.
Handling Advice:	Minimize freezing and thawing.
Storage:	-20 °C
Storage Comment:	Aliquot and store at -20°C, with minimal freeze/thawing. A working aliquot may be refrigerated at 4°C for a few weeks and still remain viable.



Western Blotting

Image 1. ABIN5539826 (0.5 μ g/ml) staining of Human Uterus lysate (35 μ g protein in RIPA buffer). Primary incubation was 1 hour. Detected by chemiluminescence.