

Datasheet for ABIN5539831
anti-GOLPH3 antibody (Internal Region)[Go to Product page](#)

2 Images

Overview

Quantity:	100 µg
Target:	GOLPH3
Binding Specificity:	Internal Region
Reactivity:	Human, Mouse
Host:	Goat
Clonality:	Polyclonal
Conjugate:	This GOLPH3 antibody is un-conjugated
Application:	Western Blotting (WB), ELISA

Product Details

Purpose:	GOLPH3
Sequence:	DLATKRVRQL LDLD
Isotype:	IgG
Cross-Reactivity:	Cow, Dog, Human, Mouse
Purification:	Purified from goat serum by ammonium sulphate precipitation followed by antigen affinity chromatography using the immunizing peptide.
Grade:	Verified

Target Details

Target:	GOLPH3
---------	--------

Target Details

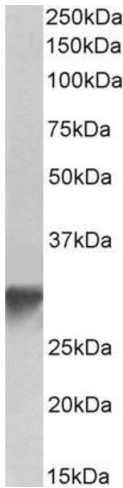
Alternative Name:	GOLPH3 (GOLPH3 Products)
Background:	GOLPH3, golgi phosphoprotein 3 (coat-protein), FLJ90675, GOPP1, GPP34, MIDAS, OTTHUMP00000115847, coat-protein, golgi peripheral membrane protein 1, 34 kDa, golgi phosphoprotein 3, golgi protein, golgi-associated protein
Gene ID:	64083, 66629
NCBI Accession:	NP_071413

Application Details

Application Notes:	Western Blot: Approx 33 kDa band observed in lysates of Human Platelets and Mouse Brain (calculated MW of 33.8 kDa according to NP_071413.1). Recommended concentration: 0.1-0.3 µg/mL. Peptide ELISA: antibody detection limit dilution 1:128000.
Restrictions:	For Research Use only

Handling

Format:	Liquid
Concentration:	0.5 mg/mL
Buffer:	Supplied at 0.5 mg/mL in Tris saline, 0.02 % sodium azide, pH 7.3 with 0.5 % bovine serum albumin.
Preservative:	Sodium azide
Precaution of Use:	This product contains Sodium azide: a POISONOUS AND HAZARDOUS SUBSTANCE which should be handled by trained staff only.
Handling Advice:	Minimize freezing and thawing.
Storage:	-20 °C
Storage Comment:	Aliquot and store at -20°C, with minimal freeze/thawing. A working aliquot may be refrigerated at 4°C for a few weeks and still remain viable.



Western Blotting

Image 1. ABIN5539831 (0.3µg/ml) staining of Human Platelets lysate (35µg protein in RIPA buffer). Primary incubation was 1 hour. Detected by chemiluminescence.



Western Blotting

Image 2. ABIN5539831 (0.1µg/ml) staining of Mouse brain lysate (35µg protein in RIPA buffer). Primary incubation was 1 hour. Detected by chemiluminescence.