



[Go to Product page](#)

Datasheet for ABIN5539833
anti-GSTA3 antibody (Internal Region)

1 Image

Overview

Quantity:	100 µg
Target:	GSTA3
Binding Specificity:	Internal Region
Reactivity:	Mouse, Rat
Host:	Goat
Clonality:	Polyclonal
Conjugate:	This GSTA3 antibody is un-conjugated
Application:	Western Blotting (WB), ELISA

Product Details

Purpose:	Gsta3/Gsta5/Gst Yc2 (rat)
Sequence:	EMDPGIVDNF PLLK
Isotype:	IgG
Specificity:	Reported variants represent identical protein: NP_001009920.1, NP_001153211.1. Please note that this antibody is expected to cross-react to the homologous Mouse protein Gsta3
Cross-Reactivity:	Mouse, Rat
Purification:	Purified from goat serum by ammonium sulphate precipitation followed by antigen affinity chromatography using the immunizing peptide.
Grade:	Verified

Target Details

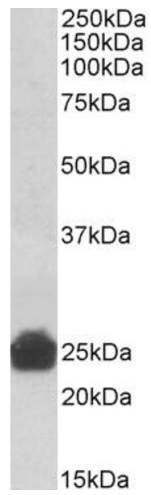
Target:	GSTA3
Alternative Name:	Gsta3 (GSTA3 Products)
Background:	Gsta3, Gsta5, glutathione S-transferase Yc2 subunit, MGC112704, Yc2, GST A5-5, GST Yc2, glutathione S-transferase Yc-2, glutathione S-transferase alpha-5, glutathione S-transferase A3, glutathione S-transferase alpha 3
Gene ID:	14859, 494500
NCBI Accession:	NP_001009920

Application Details

Application Notes:	Western Blot: Approx 25 kDa band observed in Mouse and Rat lysates (calculated MW of 25.3 kDa according to NP_001009920.1. Recommended concentration: 0.3-1 µg/mL. Peptide ELISA: antibody detection limit dilution 1:32000.
Restrictions:	For Research Use only

Handling

Format:	Liquid
Concentration:	0.5 mg/mL
Buffer:	Supplied at 0.5 mg/mL in Tris saline, 0.02 % sodium azide, pH 7.3 with 0.5 % bovine serum albumin.
Preservative:	Sodium azide
Precaution of Use:	This product contains Sodium azide: a POISONOUS AND HAZARDOUS SUBSTANCE which should be handled by trained staff only.
Handling Advice:	Minimize freezing and thawing.
Storage:	-20 °C
Storage Comment:	Aliquot and store at -20°C, with minimal freeze/thawing. A working aliquot may be refrigerated at 4°C for a few weeks and still remain viable.



Western Blotting

Image 1. ABIN5539833 (0.3µg/ml) staining of Rat Liver lysate (35µg protein in RIPA buffer). Primary incubation was 1 hour. Detected by chemiluminescence.