

Datasheet for ABIN5539834
anti-GLRA1 antibody (Internal Region)[Go to Product page](#)

2 Images

Overview

Quantity:	100 µg
Target:	GLRA1
Binding Specificity:	Internal Region
Reactivity:	Human, Mouse, Rat
Host:	Goat
Clonality:	Polyclonal
Conjugate:	This GLRA1 antibody is un-conjugated
Application:	Western Blotting (WB), ELISA, Immunohistochemistry (IHC)

Product Details

Purpose:	Glycine receptor, alpha 1 (intracellular)
Sequence:	CLQAKDGISV KGAN
Isotype:	IgG
Specificity:	The immunizing peptide represents part of the cytoplasmic domain. The antibody is not expected to cross-react with other glycine receptor alpha proteins.
Cross-Reactivity:	Cow, Dog, Human, Mouse, Pig, Rat
Purification:	Purified from goat serum by ammonium sulphate precipitation followed by antigen affinity chromatography using the immunizing peptide.
Grade:	Verified

Target Details

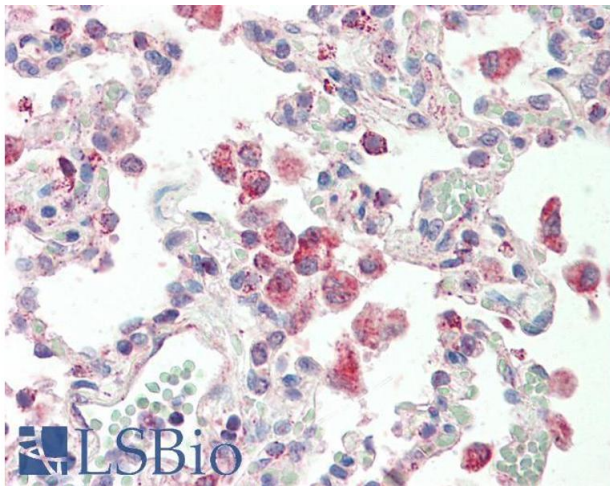
Target:	GLRA1
Alternative Name:	Gla1 (GLRA1 Products)
Background:	Gla1, glycine receptor, alpha 1, GLYRA1, glycine receptor 48 kDa subunit, glycine receptor strychnine-binding subunit, glycine receptor subunit alpha-1, glycine receptor, alpha 1 subunit
Gene ID:	2741, 14654, 25674
NCBI Accession:	NP_037265
Pathways:	Synaptic Membrane

Application Details

Application Notes:	Immunohistochemistry: Paraffin embedded Human Lung and Kidney. Recommended concentration: 5 µg/mL. Western Blot: Approx 60 kDa band observed in Mouse and Rat Testis lysates (calculated MW of 51.7 kDa according to Mouse NP_065238.2). The observed molecular weight corresponds to the glycosylated form. Recommended concentration: 0.3-1 µg/mL. Primary incubat Peptide ELISA: antibody detection limit dilution 1:128000.
Restrictions:	For Research Use only

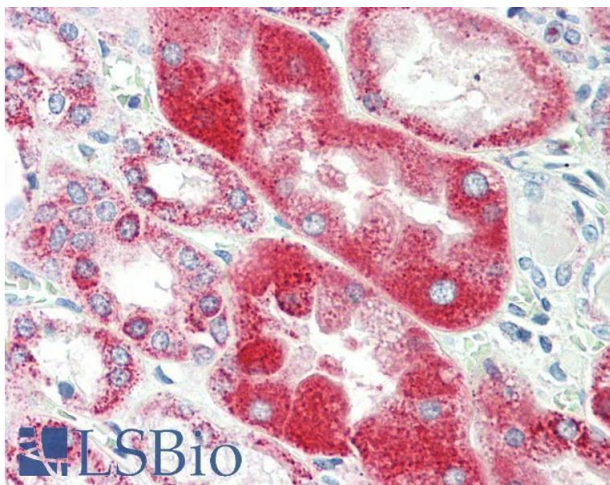
Handling

Format:	Liquid
Concentration:	0.5 mg/mL
Buffer:	Supplied at 0.5 mg/mL in Tris saline, 0.02 % sodium azide, pH 7.3 with 0.5 % bovine serum albumin.
Preservative:	Sodium azide
Precaution of Use:	This product contains Sodium azide: a POISONOUS AND HAZARDOUS SUBSTANCE which should be handled by trained staff only.
Handling Advice:	Minimize freezing and thawing.
Storage:	-20 °C
Storage Comment:	Aliquot and store at -20°C, with minimal freeze/thawing. A working aliquot may be refrigerated at 4°C for a few weeks and still remain viable.



Immunohistochemistry

Image 1. ABIN5539834 (5µg/ml) staining of paraffin embedded Human Lung. Steamed antigen retrieval with citrate buffer pH 6, AP-staining.



Immunohistochemistry

Image 2. ABIN5539834 (5µg/ml) staining of paraffin embedded Human Kidney. Steamed antigen retrieval with citrate buffer pH 6, AP-staining.