

Datasheet for ABIN5539838  
**anti-LILRA4 antibody (C-Term)**[Go to Product page](#)

## 1 Image

## Overview

Quantity:	100 µg
Target:	LILRA4
Binding Specificity:	C-Term
Reactivity:	Human
Host:	Goat
Clonality:	Polyclonal
Conjugate:	This LILRA4 antibody is un-conjugated
Application:	ELISA, Western Blotting (WB)

## Product Details

Purpose:	LILRA4
Sequence:	PRCSQEANSR KDN
Isotype:	IgG
Cross-Reactivity:	Human
Purification:	Purified from goat serum by ammonium sulphate precipitation followed by antigen affinity chromatography using the immunizing peptide.
Grade:	Verified

## Target Details

Target:	LILRA4
---------	--------

## Target Details

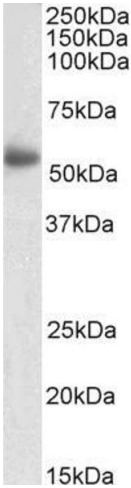
Alternative Name:	LILRA4 ( <a href="#">LILRA4 Products</a> )
Background:	LILRA4, leukocyte immunoglobulin-like receptor, subfamily A (with TM domain), member 4, CD85g, ILT7, CD85 antigen-like family member G, ILT-7, immunoglobulin-like transcript 7, leukocyte immunoglobulin-like receptor subfamily A member 4, leukocyte immunog
Gene ID:	23547
NCBI Accession:	<a href="#">NP_036408</a>

## Application Details

Application Notes:	Western Blot: Approx 55 kDa band observed in Human Spleen lysates (calculated MW of 55.2 kDa according to NP_036408.3). Recommended concentration: 1-3 µg/mL. Peptide ELISA: antibody detection limit dilution 1:1000.
Restrictions:	For Research Use only

## Handling

Format:	Liquid
Concentration:	0.5 mg/mL
Buffer:	Supplied at 0.5 mg/mL in Tris saline, 0.02 % sodium azide, pH 7.3 with 0.5 % bovine serum albumin.
Preservative:	Sodium azide
Precaution of Use:	This product contains Sodium azide: a POISONOUS AND HAZARDOUS SUBSTANCE which should be handled by trained staff only.
Handling Advice:	Minimize freezing and thawing.
Storage:	-20 °C
Storage Comment:	Aliquot and store at -20°C, with minimal freeze/thawing. A working aliquot may be refrigerated at 4°C for a few weeks and still remain viable.



Western Blotting

**Image 1.** ABIN5539838 (2µg/ml) staining of Human Spleen lysate (35µg protein in RIPA buffer). Primary incubation was 1 hour. Detected by chemiluminescence.