

Datasheet for ABIN5539846
anti-MMP 9 antibody (Internal Region)[Go to Product page](#)

4 Images

Overview

Quantity:	100 µg
Target:	MMP 9 (MMP9)
Binding Specificity:	Internal Region
Reactivity:	Human, Mouse
Host:	Goat
Clonality:	Polyclonal
Conjugate:	This MMP 9 antibody is un-conjugated
Application:	Western Blotting (WB), ELISA, Immunofluorescence (IF)

Product Details

Purpose:	MMP9
Sequence:	KLDSVFEEPL SKK
Isotype:	IgG
Predicted Reactivity:	Human
Purification:	Purified from goat serum by ammonium sulphate precipitation followed by antigen affinity chromatography using the immunizing peptide.
Grade:	Verified

Target Details

Target:	MMP 9 (MMP9)
---------	--------------

Target Details

Alternative Name:	MMP9 (MMP9 Products)
Background:	MMP9, matrix metalloproteinase 9, gelatinase B, 92 kDa gelatinase, 92 kDa type IV collagenase, HGNC:7176, CLG4B, GELB, 92kD type IV collagenase, gelatinaseB, macrophage gelatinase, matrix metalloproteinase 9 (gelatinase B, 92kD gelatinase, 92kD type IV collagenase), type V collagenase
Gene ID:	4318
NCBI Accession:	NP_004985
Pathways:	Cellular Response to Molecule of Bacterial Origin, Positive Regulation of Immune Effector Process, CXCR4-mediated Signaling Events

Application Details

Application Notes:	<p>DS WB Results: Approx.80 kDa and 70 kDa bands observed in Human Peripheral Blood Mononucleocytes lysates. These bands correspond to the mature forms (http://www.uniprot.org/uniprot/P14780). This protein has a calculated MW of 78.5 kDa according to NP_004985.2, but the precursor is usually seen as 92 kDa or larger.</p> <p>Recommended concentration: 1-3 µg/mL. Approx.75 kDa band observed in Mouse Heart lysates (calculated MW of 80.5 kDa according to Mouse NP_038627.1). Recommended concentration: 0.1-0.3 µg/mL.</p> <p>Peptide ELISA: antibody detection limit dilution 1:64000.</p>
Comment:	Immunofluorescence: Strong expression of the protein seen in the cytoplasm of U2OS and HeLa cells. Recommended concentration: 10µg/ml.
Restrictions:	For Research Use only

Handling

Format:	Liquid
Concentration:	0.5 mg/mL
Buffer:	Supplied at 0.5 mg/mL in Tris saline, 0.02 % sodium azide, pH 7.3 with 0.5 % bovine serum albumin.
Preservative:	Sodium azide
Precaution of Use:	This product contains Sodium azide: a POISONOUS AND HAZARDOUS SUBSTANCE which should be handled by trained staff only.

Handling

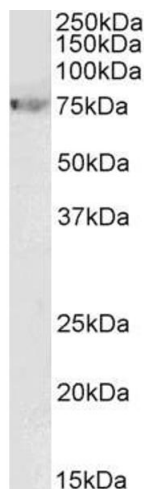
Handling Advice:	Minimize freezing and thawing.
Storage:	-20 °C
Storage Comment:	Aliquot and store at -20°C, with minimal freeze/thawing. A working aliquot may be refrigerated at 4°C for a few weeks and still remain viable.

Images



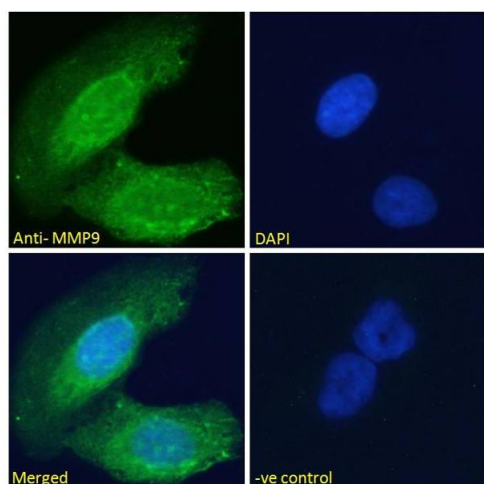
Western Blotting

Image 1. ABIN5539846 (1µg/ml) staining of Peripheral Blood Lymphocytes lysate (35µg protein in RIPA buffer). Primary incubation was 1 hour. Detected by chemiluminescence.



Western Blotting

Image 2. ABIN5539846 (0.1µg/ml) staining of Mouse Heart lysate (35µg protein in RIPA buffer). Primary incubation was 1 hour. Detected by chemiluminescence.



Immunofluorescence

Image 3. ABIN5539846 Immunofluorescence analysis of paraformaldehyde fixed U2OS cells, permeabilized with 0.15% Triton. Primary incubation 1hr (10ug/ml) followed by Alexa Fluor 488 secondary antibody (2ug/ml), showing cytoplasmic staining. The nuclear stain is DAPI (blue). Negative control: Unimmunized goat IgG (10ug/ml) followed by Alexa Fluor 488 secondary antibody (2ug/ml).

Please check the [product details page](#) for more images. Overall 4 images are available for ABIN5539846.