

Datasheet for ABIN5539847
anti-GSTO1 antibody (Internal Region)[Go to Product page](#)

1 Image

Overview

Quantity:	100 µg
Target:	GSTO1
Binding Specificity:	Internal Region
Reactivity:	Human
Host:	Goat
Clonality:	Polyclonal
Conjugate:	This GSTO1 antibody is un-conjugated
Application:	Western Blotting (WB), ELISA

Product Details

Purpose:	GSTO1
Sequence:	KEDPTVSALL TSEKD
Isotype:	IgG
Specificity:	This antibody is expected to recognize all reported isoforms (NP_004823.1, NP_001177931.1, NP_001177932.1).
Cross-Reactivity:	Human
Purification:	Purified from goat serum by ammonium sulphate precipitation followed by antigen affinity chromatography using the immunizing peptide.
Grade:	Verified

Target Details

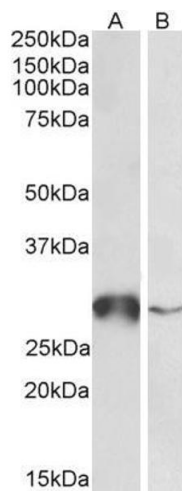
Target:	GSTO1
Alternative Name:	GSTO1 (GSTO1 Products)
Background:	GSTO1, glutathione S-transferase omega 1, GSTO 1-1, GSTTLp28, P28, SPG-R, GSTO-1, MMA(V) reductase, S-(Phenacyl)glutathione reductase, glutathione S-transferase omega 1-1, glutathione S-transferase omega-1, glutathione-S-transferase like, glutathione-depe
Gene ID:	9446
NCBI Accession:	NP_004823 , NP_001177931 , NP_001177932
Pathways:	Myometrial Relaxation and Contraction , Negative Regulation of Transporter Activity

Application Details

Application Notes:	Western Blot: Approx 28 kDa band observed in Human Liver and in Peripheral Blood Mononucleocytes lysates (calculated MW of 27.6 kDa according to NP_004823.1). Recommended concentration: 0.5-2 µg/mL. Peptide ELISA: antibody detection limit dilution 1:128000.
Restrictions:	For Research Use only

Handling

Format:	Liquid
Concentration:	0.5 mg/mL
Buffer:	Supplied at 0.5 mg/mL in Tris saline, 0.02 % sodium azide, pH 7.3 with 0.5 % bovine serum albumin.
Preservative:	Sodium azide
Precaution of Use:	This product contains Sodium azide: a POISONOUS AND HAZARDOUS SUBSTANCE which should be handled by trained staff only.
Handling Advice:	Minimize freezing and thawing.
Storage:	-20 °C
Storage Comment:	Aliquot and store at -20°C, with minimal freeze/thawing. A working aliquot may be refrigerated at 4°C for a few weeks and still remain viable.



Western Blotting

Image 1. ABIN5539847 (0.5µg/ml) staining of Human Liver (A) and Peripheral Blood Lymphocytes (B) lysates (35µg protein in RIPA buffer). Primary incubation was 1 hour. Detected by chemiluminescence.