

Datasheet for ABIN5539861  
**anti-MOB2 antibody (AA 128-140)**[Go to Product page](#)

## 1 Image

## Overview

Quantity:	100 µg
Target:	MOB2
Binding Specificity:	AA 128-140
Reactivity:	Human
Host:	Goat
Clonality:	Polyclonal
Conjugate:	This MOB2 antibody is un-conjugated
Application:	Western Blotting (WB), ELISA, Immunohistochemistry (IHC)

## Product Details

Purpose:	MOB2 (aa128-140)
Sequence:	DERGKKVKCT APQ
Isotype:	IgG
Specificity:	This antibody is expected to recognize both reported isoforms (NP_001165694.1, NP_443731.2) only.
Cross-Reactivity:	Cow, Dog, Human, Mouse, Rat
Purification:	Purified from goat serum by ammonium sulphate precipitation followed by antigen affinity chromatography using the immunizing peptide.
Grade:	Verified

## Target Details

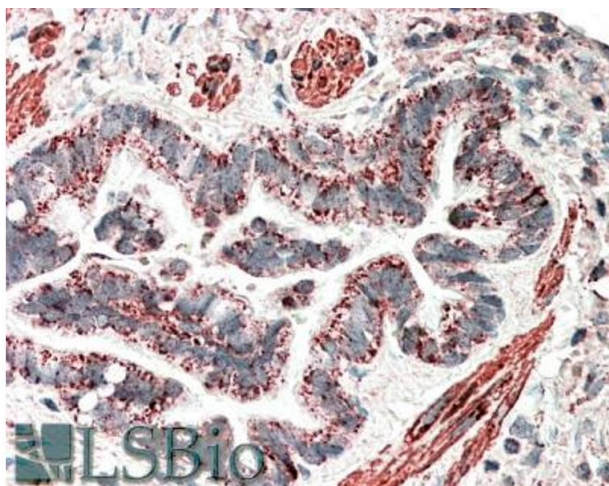
Target:	MOB2
Alternative Name:	MOB2 ( <a href="#">MOB2 Products</a> )
Background:	MOB2, HCCA2, HCCA2 protein, mob2 homolog, mps one binder kinase activator-like 2
Gene ID:	81532, 101513, 499288
NCBI Accession:	<a href="#">NP_001165694</a> , <a href="#">NP_443731</a>

## Application Details

Application Notes:	<p>Immunohistochemistry: In paraffin embedded Human Lung shows staining of smooth muscle cells, vasculature and apical secretory granules in the epithelium of the bronchiole.</p> <p>Recommended concentration: 5-10 µg/mL.</p> <p>Western Blot: Approx 30 kDa band observed in lysates of cell line Jurkat (calculated MW of 30.2 kDa according to NP_001165694.1). Recommended concentration: 0.02-0.06 µg/mL. An additional band of unknown identity was also consistently observed at 48 kDa. Thi</p> <p>Peptide ELISA: antibody detection limit dilution 1:128000.</p>
Restrictions:	For Research Use only

## Handling

Format:	Liquid
Concentration:	0.5 mg/mL
Buffer:	Supplied at 0.5 mg/mL in Tris saline, 0.02 % sodium azide, pH 7.3 with 0.5 % bovine serum albumin.
Preservative:	Sodium azide
Precaution of Use:	This product contains Sodium azide: a POISONOUS AND HAZARDOUS SUBSTANCE which should be handled by trained staff only.
Handling Advice:	Minimize freezing and thawing.
Storage:	-20 °C
Storage Comment:	Aliquot and store at -20°C, with minimal freeze/thawing. A working aliquot may be refrigerated at 4°C for a few weeks and still remain viable.



#### Immunohistochemistry

**Image 1.** ABIN5539861 (5µg/ml) staining of paraffin embedded Human Lung. Steamed antigen retrieval with citrate buffer pH 6, AP-staining.