

Datasheet for ABIN5539864
anti-MDH2 antibody (Internal Region)[Go to Product page](#)

3 Images

Overview

Quantity:	100 µg
Target:	MDH2
Binding Specificity:	Internal Region
Reactivity:	Human, Mouse, Rat, Pig
Host:	Goat
Clonality:	Polyclonal
Conjugate:	This MDH2 antibody is un-conjugated
Application:	Western Blotting (WB), ELISA, Immunohistochemistry (IHC)

Product Details

Purpose:	MDH2
Sequence:	TRDDL FNTNA T
Isotype:	IgG
Cross-Reactivity:	Cow, Human, Mouse, Pig, Rat
Purification:	Purified from goat serum by ammonium sulphate precipitation followed by antigen affinity chromatography using the immunizing peptide.
Grade:	Verified

Target Details

Target:	MDH2
---------	------

Target Details

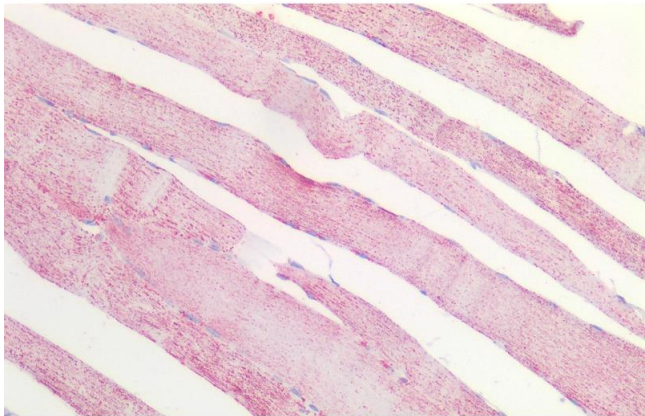
Alternative Name:	MDH2 (MDH2 Products)
Background:	MDH2, malate dehydrogenase 2, NAD (mitochondrial), M-MDH, MDH, MGC:3559, MOR1, malate dehydrogenase, mitochondrial
Gene ID:	4191, 17448, 81829
NCBI Accession:	NP_005909

Application Details

Application Notes:	Immunohistochemistry: Paraffin embedded Human Skeletal Muscle. Recommended concentration: 5 µg/mL. Western Blot: Approx 35 kDa band observed in lysates of cell lines HeLa, HepG2 and NIH3T3 (calculated MW of 35.5 kDa according to Human NP_005909.2 and 35.6 kDa according to Mouse NP_032643.2). Recommended concentration: 0.1-0.3 µg/mL. Primary incubation wa Peptide ELISA: antibody detection limit dilution 1:8000.
Restrictions:	For Research Use only

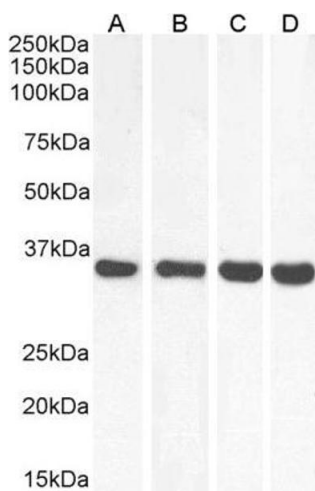
Handling

Format:	Liquid
Concentration:	0.5 mg/mL
Buffer:	Supplied at 0.5 mg/mL in Tris saline, 0.02 % sodium azide, pH 7.3 with 0.5 % bovine serum albumin.
Preservative:	Sodium azide
Precaution of Use:	This product contains Sodium azide: a POISONOUS AND HAZARDOUS SUBSTANCE which should be handled by trained staff only.
Handling Advice:	Minimize freezing and thawing.
Storage:	-20 °C
Storage Comment:	Aliquot and store at -20°C, with minimal freeze/thawing. A working aliquot may be refrigerated at 4°C for a few weeks and still remain viable.



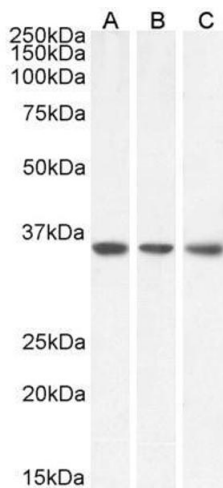
Immunohistochemistry

Image 1. ABIN5539864 (5 µg/mL) staining of paraffin embedded Human Skeletal Muscle. Steamed antigen retrieval with citrate buffer pH 6, AP-staining.



Western Blotting

Image 2. ABIN5539864 (0.01 µg/ml) staining of Human (A), Mouse (B), Rat (C) and Pig (D) Heart lysate (35 µg protein in RIPA buffer). Primary incubation was 1 hour. Detected by chemiluminescence.



Western Blotting

Image 3. ABIN5539864 (0.1 µg/ml) staining of HeLa (A), HepG2 (B) and NIH3T3 (C) lysate (35 µg protein in RIPA buffer). Primary incubation was 1 hour. Detected by chemiluminescence.