

Datasheet for ABIN5539865
anti-MDH2 antibody (AA 221-232)

3 Images

[Go to Product page](#)

Overview

| | |
|----------------------|--|
| Quantity: | 100 µg |
| Target: | MDH2 |
| Binding Specificity: | AA 221-232 |
| Reactivity: | Human |
| Host: | Goat |
| Clonality: | Polyclonal |
| Conjugate: | This MDH2 antibody is un-conjugated |
| Application: | Western Blotting (WB), ELISA, Immunohistochemistry (IHC) |

Product Details

| | |
|-------------------|---|
| Purpose: | MDH2 (aa221-232) |
| Sequence: | DQLTALTGRI QE |
| Isotype: | IgG |
| Cross-Reactivity: | Human |
| Purification: | Purified from goat serum by ammonium sulphate precipitation followed by antigen affinity chromatography using the immunizing peptide. |
| Grade: | Verified |

Target Details

| | |
|---------|------|
| Target: | MDH2 |
|---------|------|

Target Details

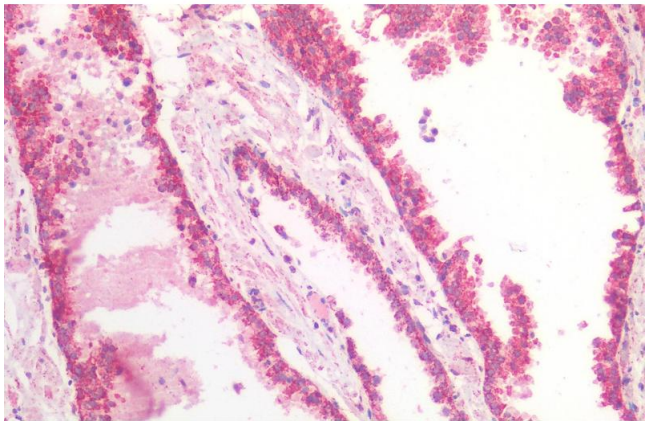
| | |
|-------------------|--|
| Alternative Name: | MDH2 (MDH2 Products) |
| Background: | MDH2, malate dehydrogenase 2, NAD (mitochondrial), M-MDH, MDH, MGC:3559, MOR1, malate dehydrogenase, mitochondrial |
| Gene ID: | 4191 |
| NCBI Accession: | NP_005909 |

Application Details

| | |
|--------------------|---|
| Application Notes: | <p>Immunohistochemistry: Paraffin embedded Human Prostate. Recommended concentration: 5 µg/mL.</p> <p>Western Blot: Approx 36-37 kDa band observed in lysates of cell lines HeLa, HepG2 and K562, and approx 35 kDa band observed in Human Heart and Liver lysates (calculated MW of 35.5 kDa according to NP_005909.2). Recommended concentration: 0.01-0.03 µg/mL.</p> <p>Peptide ELISA: antibody detection limit dilution 1:16000.</p> |
| Restrictions: | For Research Use only |

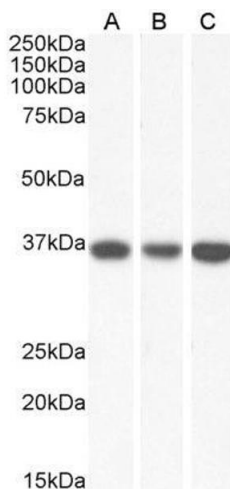
Handling

| | |
|--------------------|--|
| Format: | Liquid |
| Concentration: | 0.5 mg/mL |
| Buffer: | Supplied at 0.5 mg/mL in Tris saline, 0.02 % sodium azide, pH 7.3 with 0.5 % bovine serum albumin. |
| Preservative: | Sodium azide |
| Precaution of Use: | This product contains Sodium azide: a POISONOUS AND HAZARDOUS SUBSTANCE which should be handled by trained staff only. |
| Handling Advice: | Minimize freezing and thawing. |
| Storage: | -20 °C |
| Storage Comment: | Aliquot and store at -20°C, with minimal freeze/thawing. A working aliquot may be refrigerated at 4°C for a few weeks and still remain viable. |



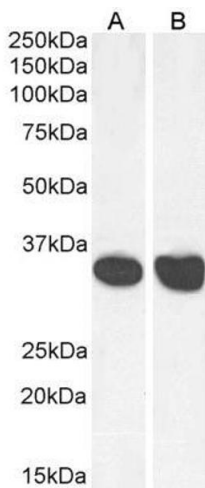
Immunohistochemistry

Image 1. ABIN5539865 (5 µg/mL) staining of paraffin embedded Human Prostate. Steamed antigen retrieval with citrate buffer pH 6, AP-staining.



Western Blotting

Image 2. ABIN5539865 (0.03µg/ml) staining of HeLa (A), HepG2 (B) and K562 (C) lysate (35µg protein in RIPA buffer). Primary incubation was 1 hour. Detected by chemiluminescence.



Western Blotting

Image 3. ABIN5539865 (0.03µg/ml) staining of Human Heart (A) and Liver (B) lysate (35µg protein in RIPA buffer). Primary incubation was 1 hour. Detected by chemiluminescence.