



Datasheet for ABIN5539871  
**anti-NAT8L antibody (AA 211-223)**



[Go to Product page](#)

2 Images

Overview

Quantity:	100 µg
Target:	NAT8L
Binding Specificity:	AA 211-223
Reactivity:	Human, Mouse
Host:	Goat
Clonality:	Polyclonal
Conjugate:	This NAT8L antibody is un-conjugated
Application:	Western Blotting (WB), ELISA, Immunofluorescence (IF), Flow Cytometry (FACS)

Product Details

Purpose:	Nat8l (mouse aa211-223)
Sequence:	SVDSRFRGKG IAK
Isotype:	IgG
Cross-Reactivity:	Cow, Dog, Human, Mouse, Rat
Purification:	Purified from goat serum by ammonium sulphate precipitation followed by antigen affinity chromatography using the immunizing peptide.
Grade:	Verified

Target Details

Target:	NAT8L
---------	-------

## Target Details

---

Alternative Name:	Nat8l ( <a href="#">NAT8L Products</a> )
Background:	Nat8l, N-acetyltransferase 8-like, 1110038008Rik, Shati, N-acetylaspartate synthetase, N-acetyltransferase 8-like protein, NAA synthetase, protein Shati
Gene ID:	339983, 269642, 289727
NCBI Accession:	<a href="#">NP_001001985</a>

## Application Details

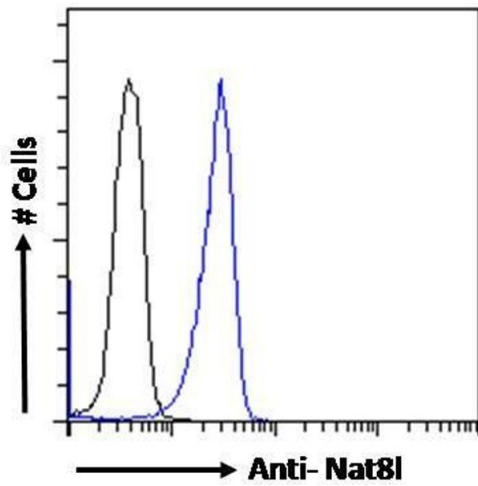
---

Application Notes:	Western Blot: Approx 48-50 kDa band observed in fetal and adult Mouse, and in Human (Cerebellum) Brain lysates (calculated MW of 32.7 kDa according to Mouse NP_001001985.3 and 32.8 kDa according to Human NP_848652.2). The observed band was completely block Peptide ELISA: antibody detection limit dilution 1:128000.
Comment:	<b>Immunofluorescence:</b> Strong expression of the protein seen in the cytoplasm of HEK293 cells. Recommended concentration: 10µg/ml. <b>Flow Cytometry:</b> Flow cytometric analysis of Kelly cells. Recommended concentration: 10ug/
Restrictions:	For Research Use only

## Handling

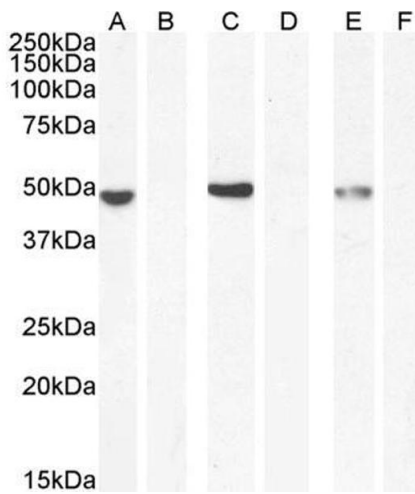
---

Format:	Liquid
Concentration:	0.5 mg/mL
Buffer:	Supplied at 0.5 mg/mL in Tris saline, 0.02 % sodium azide, pH 7.3 with 0.5 % bovine serum albumin.
Preservative:	Sodium azide
Precaution of Use:	This product contains Sodium azide: a POISONOUS AND HAZARDOUS SUBSTANCE which should be handled by trained staff only.
Handling Advice:	Minimize freezing and thawing.
Storage:	-20 °C
Storage Comment:	Aliquot and store at -20°C, with minimal freeze/thawing. A working aliquot may be refrigerated at 4°C for a few weeks and still remain viable.



### Flow Cytometry

**Image 1.** ABIN5539871 Flow cytometric analysis of paraformaldehyde fixed Kelly cells (blue line), permeabilized with 0.5% Triton. Primary incubation 1hr (10ug/ml) followed by Alexa Fluor 488 secondary antibody (1ug/ml). IgG control: Unimmunized goat IgG (black line) followed by Alexa Fluor 488 secondary antibody.



### Western Blotting

**Image 2.** ABIN5539871 (0.1µg/ml) staining of Brain of fetal Mouse (A) + peptide (B), Mouse (C) + peptide (D), Human (E) + peptide (F) lysate (35µg protein in RIPA buffer). Detected by chemiluminescence.