

Datasheet for ABIN5539884  
**anti-MEX3C antibody (AA 541-554)**[Go to Product page](#)

## 2 Images

## Overview

Quantity:	100 µg
Target:	MEX3C
Binding Specificity:	AA 541-554
Reactivity:	Human, Mouse
Host:	Goat
Clonality:	Polyclonal
Conjugate:	This MEX3C antibody is un-conjugated
Application:	Western Blotting (WB), ELISA, Immunohistochemistry (IHC)

## Product Details

Purpose:	MEX3C (aa541-554)
Sequence:	TPRLSPTFPE SIEH
Isotype:	IgG
Cross-Reactivity:	Cow, Dog, Human, Mouse, Pig, Rat
Purification:	Purified from goat serum by ammonium sulphate precipitation followed by antigen affinity chromatography using the immunizing peptide.
Grade:	Verified

## Target Details

Target:	MEX3C
---------	-------

## Target Details

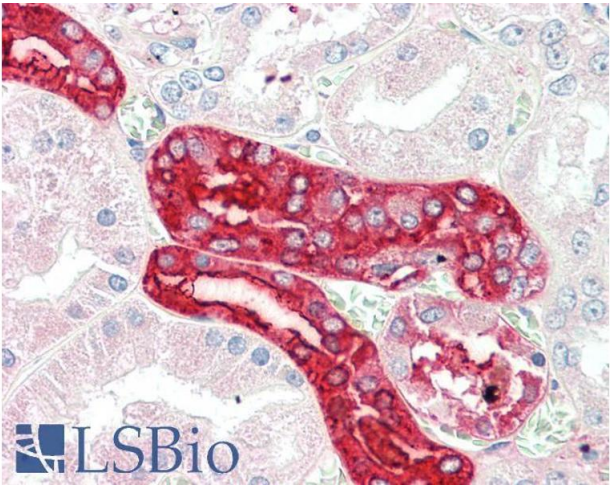
Alternative Name:	MEX3C ( <a href="#">MEX3C Products</a> )
Background:	MEX3C, mex-3 homolog C (C. elegans), FLJ38871, MEX-3C, RKHD2, RNF194, OTTHUMP00000163545, RING finger and KH domain-containing protein 2, RING finger protein 194, RNA-binding protein MEX3C, ring finger and KH domain containing 2
Gene ID:	51320, 240396, 307271
NCBI Accession:	<a href="#">NP_057710</a>

## Application Details

Application Notes:	Immunohistochemistry: Paraffin embedded Human Kidney. Recommended concentration: 5 µg/mL.  Western Blot: Approx 60+36 kDa bands observed in Mouse Testis lysates, and these bands reduced after knock-down by gene trap (calculated MW of 69.4 kDa according to NP_057710.3). Recommended concentration: 0.2-0.5 µg/mL. Primary incubation was 1 hour.  Peptide ELISA: antibody detection limit dilution 1:32000.
Restrictions:	For Research Use only

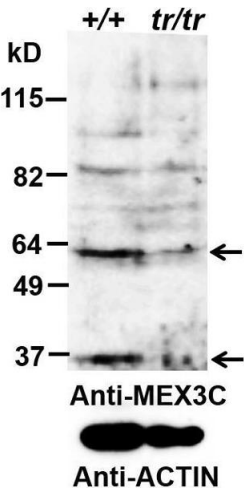
## Handling

Format:	Liquid
Concentration:	0.5 mg/mL
Buffer:	Supplied at 0.5 mg/mL in Tris saline, 0.02 % sodium azide, pH 7.3 with 0.5 % bovine serum albumin.
Preservative:	Sodium azide
Precaution of Use:	This product contains Sodium azide: a POISONOUS AND HAZARDOUS SUBSTANCE which should be handled by trained staff only.
Handling Advice:	Minimize freezing and thawing.
Storage:	-20 °C
Storage Comment:	Aliquot and store at -20°C, with minimal freeze/thawing. A working aliquot may be refrigerated at 4°C for a few weeks and still remain viable.



#### Immunohistochemistry

**Image 1.** ABIN5539884 (5µg/ml) staining of paraffin embedded Human Kidney. Steamed antigen retrieval with citrate buffer pH 6, AP-staining.



#### Western Blotting

**Image 2.** ABIN5539884 (0.2µg/ml) staining of Mouse Testis (+/+ is wt, trp/trp is knock-down) lysate (35µg protein in RIPA buffer). Data obtained by Dr. B. Lu, Wake Forest Baptist Medical Center, Winston-Salem, NC, USA. Detected by chemiluminescence.