

Datasheet for ABIN5539895  
**anti-TMX1 antibody (C-Term) (Biotin)**[Go to Product page](#)

## 1 Image

## Overview

Quantity:	100 µg
Target:	TMX1
Binding Specificity:	C-Term
Reactivity:	Human
Host:	Goat
Clonality:	Polyclonal
Conjugate:	This TMX1 antibody is conjugated to Biotin
Application:	Western Blotting (WB), ELISA

## Product Details

Purpose:	TXNDC1 / TMX, biotinylated
Sequence:	RSLGPSLATD KS.
Isotype:	IgG
Cross-Reactivity:	Human
Purification:	Purified from goat serum by ammonium sulphate precipitation followed by antigen affinity chromatography using the immunizing peptide.
Grade:	Verified

## Target Details

Target:	TMX1
---------	------

## Target Details

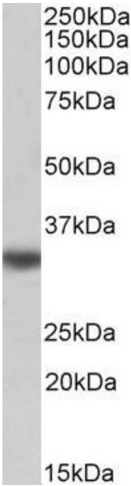
Alternative Name:	TMX1 ( <a href="#">TMX1 Products</a> )
Background:	TMX1, thioredoxin-related transmembrane protein 1, PDIA11, TMX, TXNDC, TXNDC1, protein disulfide isomerase family A, member 11, thioredoxin domain containing 1, thioredoxin domain-containing protein 1, transmembrane Trx-related protein
Gene ID:	81542
NCBI Accession:	<a href="#">NP_110382</a>
Pathways:	<a href="#">Cell RedoxHomeostasis</a>

## Application Details

Application Notes:	Western Blot: Approx 35 kDa band observed in Human Liver lysates (calculated MW of 31.8 kDa according to NP_110382.3). See non-biotinylated parental product's datasheet for further QC data. Recommended concentration: 0.01-0.03 µg/mL. Peptide ELISA: antibody detection limit dilution 1:64000.
Restrictions:	For Research Use only

## Handling

Format:	Liquid
Concentration:	0.5 mg/mL
Buffer:	Supplied at 0.5 mg/mL in Tris saline, 0.02 % sodium azide, pH 7.3 with 0.5 % bovine serum albumin.
Preservative:	Sodium azide
Precaution of Use:	This product contains Sodium azide: a POISONOUS AND HAZARDOUS SUBSTANCE which should be handled by trained staff only.
Handling Advice:	Minimize freezing and thawing.
Storage:	-20 °C
Storage Comment:	Aliquot and store at -20°C, with minimal freeze/thawing. A working aliquot may be refrigerated at 4°C for a few weeks and still remain viable.



Western Blotting

**Image 1.** Biotinylated ABIN5539895 (0.01µg/ml) staining of Human Liver lysate (35µg protein in RIPA buffer), exactly mirroring its parental non-biotinylated product. Primary incubation was 1 hour. Detected by chemiluminescence, using streptavidin-HRP and using NAP blocker as a substitute for skimmed milk.