

Datasheet for ABIN5539900  
**anti-MOBKL3 antibody (AA 137-151)**

## 3 Images

[Go to Product page](#)

## Overview

Quantity:	100 µg
Target:	MOBKL3
Binding Specificity:	AA 137-151
Reactivity:	Human, Mouse, Rat
Host:	Goat
Clonality:	Polyclonal
Conjugate:	This MOBKL3 antibody is un-conjugated
Application:	Western Blotting (WB), ELISA, Immunohistochemistry (IHC)

## Product Details

Purpose:	MOBKL3 (aa137-151)
Sequence:	NSNKYFPSRV SIKES
Isotype:	IgG
Specificity:	This antibody is expected to recognize all three reported isoforms (NP_056202.2, NP_955776.1, NP_001094289.1).
Cross-Reactivity:	Cow, Dog, Human, Mouse, Rat
Purification:	Purified from goat serum by ammonium sulphate precipitation followed by antigen affinity chromatography using the immunizing peptide.
Grade:	Verified

## Target Details

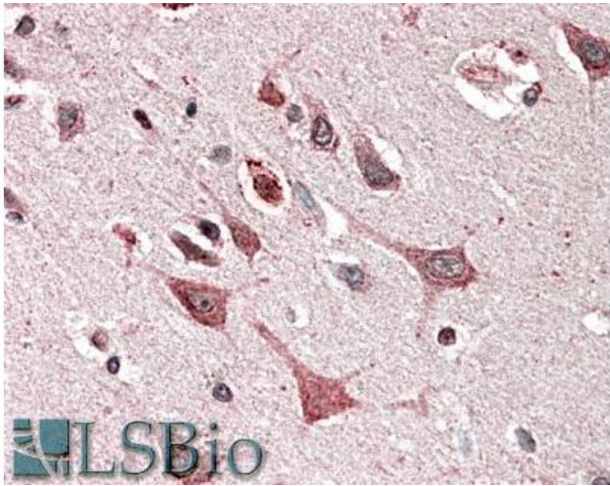
Target:	MOBKL3
Alternative Name:	MOBKL3 ( <a href="#">MOBKL3 Products</a> )
Background:	MOBKL3, MOB1, Mps One Binder kinase activator-like 3 (yeast), 2C4D, MGC12264, MOB1, MOB3, PREI3, class II mMOB1, mob1 homolog 3, mps one binder kinase activator-like 3, phocein, preimplantation protein 3
Gene ID:	25843, 19070, 171050
NCBI Accession:	<a href="#">NP_056202</a> , <a href="#">NP_955776</a> , <a href="#">NP_001094289</a>

## Application Details

Application Notes:	<p>Immunohistochemistry: In paraffin embedded Human Cerebral Cortex shows cytoplasm staining in the neuronal bodies. Recommended concentration, 5-10 µg/mL.</p> <p>Western Blot: Approx 26 kDa band observed in Human Brain (Frontal Cortex) and in Mouse and Rat Brain lysates (calculated MW of 26.0 kDa according to NP_056202.2). Recommended concentration: 0.3-1 µg/mL.</p> <p>Peptide ELISA: antibody detection limit dilution 1:4000.</p>
Restrictions:	For Research Use only

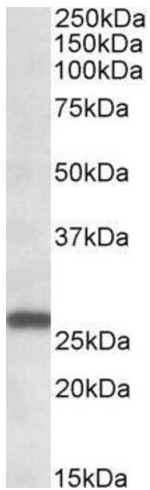
## Handling

Format:	Liquid
Concentration:	0.5 mg/mL
Buffer:	Supplied at 0.5 mg/mL in Tris saline, 0.02 % sodium azide, pH 7.3 with 0.5 % bovine serum albumin.
Preservative:	Sodium azide
Precaution of Use:	This product contains Sodium azide: a POISONOUS AND HAZARDOUS SUBSTANCE which should be handled by trained staff only.
Handling Advice:	Minimize freezing and thawing.
Storage:	-20 °C
Storage Comment:	Aliquot and store at -20°C, with minimal freeze/thawing. A working aliquot may be refrigerated at 4°C for a few weeks and still remain viable.



#### Immunohistochemistry

**Image 1.** ABIN5539900 (5µg/ml) staining of paraffin embedded Human Cerebral Cortex. Steamed antigen retrieval with citrate buffer pH 6, AP-staining.



#### Western Blotting

**Image 2.** ABIN5539900 (0.3µg/ml) staining of Human Frontal Cortex lysate (35µg protein in RIPA buffer). Primary incubation was 1 hour. Detected by chemiluminescence.



#### Western Blotting

**Image 3.** ABIN5539900 (0.3µg/ml) staining of Mouse Brain lysate (A) and (1µg/ml) staining of Rat Brain lysate (B) (35µg protein in RIPA buffer). Primary incubation was 1 hour. Detected by chemiluminescence.