

Datasheet for ABIN5539901
anti-PAX1 antibody (AA 318-329)

2 Images

[Go to Product page](#)

Overview

Quantity:	100 µg
Target:	PAX1
Binding Specificity:	AA 318-329
Reactivity:	Human
Host:	Goat
Clonality:	Polyclonal
Conjugate:	This PAX1 antibody is un-conjugated
Application:	Western Blotting (WB), ELISA

Product Details

Purpose:	PAX1 (aa318-329)
Sequence:	PKMEDWAGVN RT
Isotype:	IgG
Cross-Reactivity:	Cow, Dog, Human, Mouse, Pig
Purification:	Purified from goat serum by ammonium sulphate precipitation followed by antigen affinity chromatography using the immunizing peptide.
Grade:	Verified

Target Details

Target:	PAX1
---------	------

Target Details

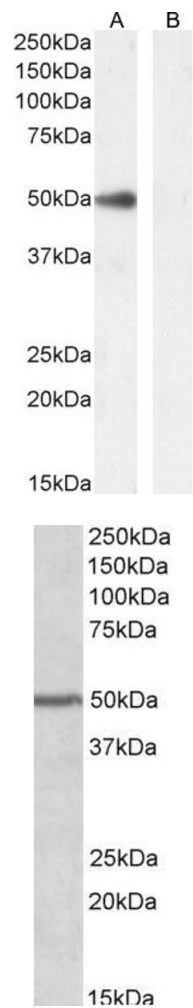
Alternative Name:	PAX1 (PAX1 Products)
Background:	PAX1, paired box 1, HUP48, paired box gene 1, paired domain gene HuP48
Gene ID:	5075, 18503, 311505
NCBI Accession:	NP_006183

Application Details

Application Notes:	Western Blot: Approx 50 kDa band observed in Human Cerebellum lysates (calculated MW of 55.5 kDa according to NP_006183.2). This band was successfully blocked by incubation with the immunizing peptide. Recommended concentration: 0.1-0.3 µg/mL. Primary incubation: 1h at room temperature. Peptide ELISA: antibody detection limit dilution 1:32000.
Restrictions:	For Research Use only

Handling

Format:	Liquid
Concentration:	0.5 mg/mL
Buffer:	Supplied at 0.5 mg/mL in Tris saline, 0.02 % sodium azide, pH 7.3 with 0.5 % bovine serum albumin.
Preservative:	Sodium azide
Precaution of Use:	This product contains Sodium azide: a POISONOUS AND HAZARDOUS SUBSTANCE which should be handled by trained staff only.
Handling Advice:	Minimize freezing and thawing.
Storage:	-20 °C
Storage Comment:	Aliquot and store at -20°C, with minimal freeze/thawing. A working aliquot may be refrigerated at 4°C for a few weeks and still remain viable.



Western Blotting

Image 1. (ABIN5539901) (0.3 µg/mL) staining of Human Cerebellum lysate (A) + peptide (B). (35 µg protein in RIPA buffer Detected by chemiluminescence.

Western Blotting

Image 2. ABIN5539901 (0.2µg/ml) staining of Human Cerebellum lysate (35µg protein in RIPA buffer). Primary incubation was 1 hour. Detected by chemiluminescence.