



[Go to Product page](#)

Datasheet for ABIN5539905

anti-PPPDE1 antibody (Internal Region)

1 Image

Overview

Quantity:	100 µg
Target:	PPPDE1
Binding Specificity:	Internal Region
Reactivity:	Human
Host:	Goat
Clonality:	Polyclonal
Conjugate:	This PPPDE1 antibody is un-conjugated
Application:	Western Blotting (WB), ELISA, Immunohistochemistry (IHC)

Product Details

Purpose:	PPPDE1 / PNAS4
Sequence:	ELGKEYKGNA YH
Isotype:	IgG
Cross-Reactivity:	Cow, Dog, Human, Mouse, Pig, Rat
Purification:	Purified from goat serum by ammonium sulphate precipitation followed by antigen affinity chromatography using the immunizing peptide.
Grade:	Verified

Target Details

Target:	PPPDE1
---------	--------

Target Details

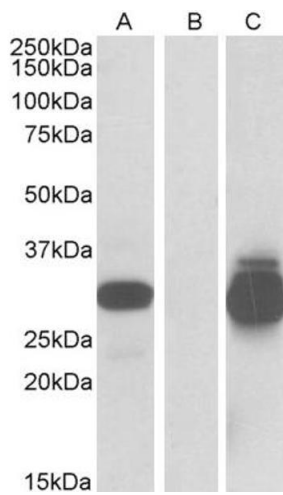
Alternative Name:	DESI2 (PPPDE1 Products)
Background:	PPPDE1, PPPDE peptidase domain containing 1, C1orf121, CGI-146, FAM152A, FLJ21998, PNAS-4, family with sequence similarity 152, member A
Gene ID:	51029, 78825, 289277
NCBI Accession:	NP_057160

Application Details

Application Notes:	Immunohistochemistry: Paraffin embedded Human Skin. Recommended concentration: 10 μ g/mL. Western Blot: In transfected HEK293 transiently expressing full-length Human PPPDE1(myc and DYKDDDDK tagged), a band of approx. 30 kDa was observed. No bands were observed in mock-transfected HEK293 and the same band was observed using anti-myc tag antibody. Peptide ELISA: antibody detection limit dilution 1:32000.
Comment:	Purchase the +ve control! The transfected lysate used to QC this product is available for sale. Please email sales@everestbiotech.com to request datasheet, pricing and delivery information.
Restrictions:	For Research Use only

Handling

Format:	Liquid
Concentration:	0.5 mg/mL
Buffer:	Supplied at 0.5 mg/mL in Tris saline, 0.02 % sodium azide, pH 7.3 with 0.5 % bovine serum albumin.
Preservative:	Sodium azide
Precaution of Use:	This product contains Sodium azide: a POISONOUS AND HAZARDOUS SUBSTANCE which should be handled by trained staff only.
Handling Advice:	Minimize freezing and thawing.
Storage:	-20 °C
Storage Comment:	Aliquot and store at -20°C, with minimal freeze/thawing. A working aliquot may be refrigerated at 4°C for a few weeks and still remain viable.



Western Blotting

Image 1. HEK293 lysate (10ug protein in RIPA buffer) overexpressing Human PPPDE1 with C-terminal MYC tag probed with ABIN5539905 (0.5ug/ml) in Lane A and probed with anti-MYC Tag (1/5000) in lane C. Mock-transfected HEK293 probed with ABIN5539905 (1mg/ml) in Lane B. Primary incubation was 1 hour. Detected by chemiluminescence.