

Datasheet for ABIN5539920

**anti-alpha 1 Adrenergic Receptor antibody (C-Term)**[Go to Product page](#)**1** Image

## Overview

Quantity:	100 µg
Target:	alpha 1 Adrenergic Receptor (ADRA1A)
Binding Specificity:	C-Term
Reactivity:	Human
Host:	Goat
Clonality:	Polyclonal
Conjugate:	This alpha 1 Adrenergic Receptor antibody is un-conjugated
Application:	Western Blotting (WB), ELISA

## Product Details

Purpose:	ADRA1A
Sequence:	PSLDKNHQVP TIK
Isotype:	IgG
Specificity:	This antibody is expected to recognize isoform 1 (NP_000671.2) only.
Cross-Reactivity:	Human
Purification:	Purified from goat serum by ammonium sulphate precipitation followed by antigen affinity chromatography using the immunizing peptide.
Grade:	Verified

## Target Details

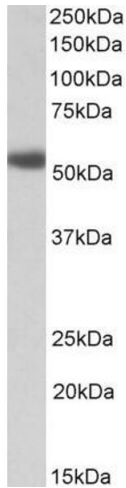
Target:	alpha 1 Adrenergic Receptor (ADRA1A)
Alternative Name:	ADRA1A ( <a href="#">ADRA1A Products</a> )
Background:	ADRA1A, adrenergic, alpha-1A-, receptor, ADRA1C, ADRA1L1, ALPHA1AAR, G protein coupled receptor, OTTHUMP00000125310, OTTHUMP00000125311, OTTHUMP00000125312, OTTHUMP00000125313, adrenergic, alpha-1A-, receptor variant 1, adrenergic, alpha-1A-, receptor var
Gene ID:	148
NCBI Accession:	<a href="#">NP_000671</a>
Pathways:	<a href="#">AMPK Signaling</a>

## Application Details

Application Notes:	Western Blot: Approx 55 kDa band observed in Human Heart and Prostate lysates (calculated MW of 51.5 kDa according to NP_000671.2). Recommended concentration: 1-3 µg/mL. Peptide ELISA: antibody detection limit dilution 1:16000.
Restrictions:	For Research Use only

## Handling

Format:	Liquid
Concentration:	0.5 mg/mL
Buffer:	Supplied at 0.5 mg/mL in Tris saline, 0.02 % sodium azide, pH 7.3 with 0.5 % bovine serum albumin.
Preservative:	Sodium azide
Precaution of Use:	This product contains Sodium azide: a POISONOUS AND HAZARDOUS SUBSTANCE which should be handled by trained staff only.
Handling Advice:	Minimize freezing and thawing.
Storage:	-20 °C
Storage Comment:	Aliquot and store at -20°C, with minimal freeze/thawing. A working aliquot may be refrigerated at 4°C for a few weeks and still remain viable.



**Western Blotting**

**Image 1.** ABIN5539920 (1µg/ml) staining of Human Prostate lysate (35µg protein in RIPA buffer). Primary incubation was 1 hour. Detected by chemiluminescence.