

Datasheet for ABIN5539932
anti-TPI1 antibody (C-Term) (Biotin)



[Go to Product page](#)

1 Image

Overview

Quantity:	100 µg
Target:	TPI1
Binding Specificity:	C-Term
Reactivity:	Human, Mouse
Host:	Goat
Clonality:	Polyclonal
Conjugate:	This TPI1 antibody is conjugated to Biotin
Application:	Western Blotting (WB), ELISA, Immunohistochemistry (IHC)

Product Details

Purpose:	Triosephosphate isomerase, Biotinylated
Sequence:	LKPEFVDIIN AKQ.
Isotype:	IgG
Specificity:	This antibody is expected to recognise reported isoforms 1 and 2 (NP_000356.1, NP_001152759.1).
Cross-Reactivity:	Cow, Dog, Human, Mouse, Rat
Purification:	Purified from goat serum by ammonium sulphate precipitation followed by antigen affinity chromatography using the immunizing peptide.
Grade:	Verified

Target Details

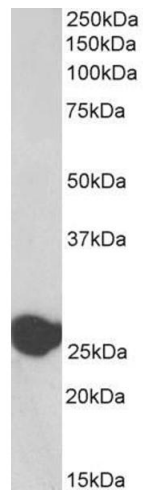
Target:	TPI1
Alternative Name:	TPI1 (TPI1 Products)
Background:	TPI1, triosephosphate isomerase 1, HEL-S-49, TIM, TPI, TPID, epididymis secretory protein Li 49, triose-phosphate isomerase
Gene ID:	7167, 21991, 24849
NCBI Accession:	NP_000356 , NP_001152759
Pathways:	Cell RedoxHomeostasis

Application Details

Application Notes:	Western Blot: Approx 26 kDa band observed in Human Liver lysates (calculated MW of 26.7 kDa according to NP_000356.1). See non-biotinylated parental product's datasheet for further QC data. Recommended concentration: 0.01-0.03 µg/mL. Peptide ELISA: antibody detection limit dilution 1:16000.
Restrictions:	For Research Use only

Handling

Format:	Liquid
Concentration:	0.5 mg/mL
Buffer:	Supplied at 0.5 mg/mL in Tris saline, 0.02 % sodium azide, pH 7.3 with 0.5 % bovine serum albumin.
Preservative:	Sodium azide
Precaution of Use:	This product contains Sodium azide: a POISONOUS AND HAZARDOUS SUBSTANCE which should be handled by trained staff only.
Handling Advice:	Minimize freezing and thawing.
Storage:	-20 °C
Storage Comment:	Aliquot and store at -20°C, with minimal freeze/thawing. A working aliquot may be refrigerated at 4°C for a few weeks and still remain viable.



Western Blotting

Image 1. Biotinylated ABIN5539932 (0.03 μ g/ml) staining of Human Liver lysate (35 μ g protein in RIPA buffer), exactly mirroring its parental non-biotinylated product. Primary incubation was 1 hour. Detected by chemiluminescence, using streptavidin-HRP and using NAP blocker as a substitute for skimmed milk.