

Datasheet for ABIN5542256
anti-SLUG antibody (AA 100-200)

8 Images

[Go to Product page](#)

Overview

Quantity:	0.1 mg
Target:	SLUG (SNAI2)
Binding Specificity:	AA 100-200
Reactivity:	Human
Host:	Mouse
Clonality:	Monoclonal
Conjugate:	This SLUG antibody is un-conjugated
Application:	Western Blotting (WB), ELISA, Immunohistochemistry (IHC), Flow Cytometry (FACS), Immunocytochemistry (ICC)

Product Details

Immunogen:	Purified recombinant fragment of human SNAI2 (AA: 100-200) expressed in E. coli.
Clone:	4B6D5
Isotype:	IgG1
Purification:	purified

Target Details

Target:	SLUG (SNAI2)
Alternative Name:	SNAI2 (SNAI2 Products)
Background:	Description: This gene encodes a member of the Snail family of C2H2-type zinc finger

Target Details

transcription factors. The encoded protein acts as a transcriptional repressor that binds to E-box motifs and is also likely to repress E-cadherin transcription in breast carcinoma. This protein is involved in epithelial-mesenchymal transitions and has antiapoptotic activity. Mutations in this gene may be associated with sporadic cases of neural tube defects.

Aliases: SLUG, WS2D, SLUGH1, SNAIL2

Molecular Weight:	30 kDa
-------------------	--------

Gene ID:	6591
----------	------

HGNC:	6591
-------	------

Application Details

Application Notes:	ELISA: 1:10000, WB: 1:500 - 1:2000, IHC: 1:200 - 1:1000, ICC: 1:200 - 1:1000, FCM: 1:200 - 1:400
--------------------	--

Restrictions:	For Research Use only
---------------	-----------------------

Handling

Format:	Liquid
---------	--------

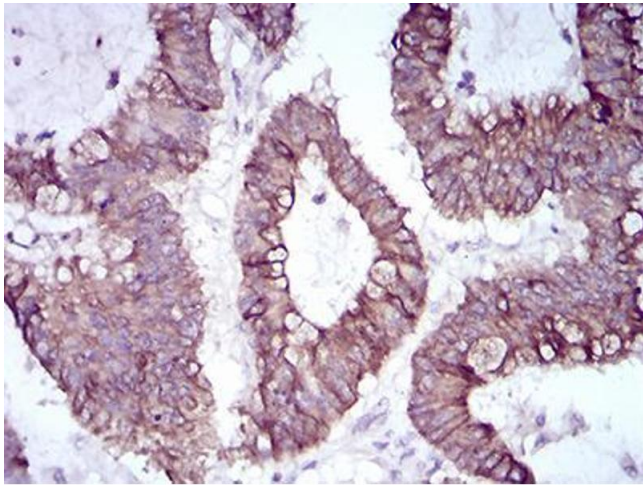
Buffer:	Purified antibody in PBS with 0.05 % sodium azide.
---------	--

Preservative:	Sodium azide
---------------	--------------

Precaution of Use:	This product contains Sodium azide: a POISONOUS AND HAZARDOUS SUBSTANCE which should be handled by trained staff only.
--------------------	--

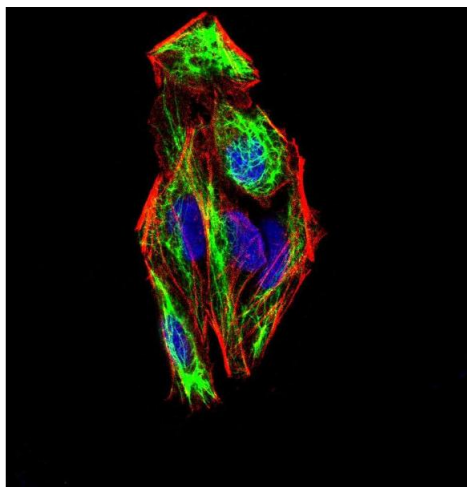
Storage:	4 °C/-20 °C
----------	-------------

Storage Comment:	4°C, -20°C for long term storage
------------------	----------------------------------



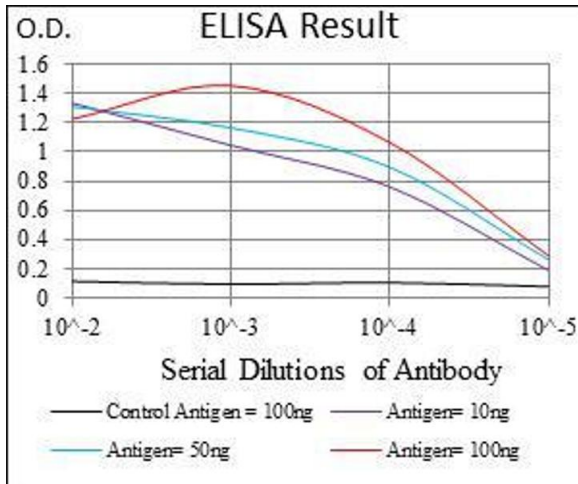
Immunohistochemistry

Image 1. Immunohistochemical analysis of paraffin-embedded colon cancer tissues using SNAI2 mouse mAb with DAB staining.



Immunofluorescence

Image 2. Immunofluorescence analysis of Hela cells using SNAI2 mouse mAb (green). Blue: DRAQ5 fluorescent DNA dye. Red: Actin filaments have been labeled with Alexa Fluor-555 phalloidin. Secondary antibody from Fisher (Cat#: 35503)



ELISA

Image 3. Black line: Control Antigen (100 ng), Purple line: Antigen(10 ng), Blue line: Antigen (50 ng), Red line: Antigen (100 ng),

Please check the [product details page](#) for more images. Overall 8 images are available for ABIN5542256.