

Datasheet for ABIN5542265
anti-ALDH6A1 antibody (AA 1-195)

9 Images

[Go to Product page](#)

Overview

Quantity:	0.1 mg
Target:	ALDH6A1
Binding Specificity:	AA 1-195
Reactivity:	Human
Host:	Mouse
Clonality:	Monoclonal
Conjugate:	This ALDH6A1 antibody is un-conjugated
Application:	Western Blotting (WB), ELISA, Immunohistochemistry (IHC), Flow Cytometry (FACS), Immunocytochemistry (ICC)

Product Details

Immunogen:	Purified recombinant fragment of human ALDH6A1 (AA: 1-195) expressed in E. coli.
Clone:	6H9B8
Isotype:	IgG1
Purification:	purified

Target Details

Target:	ALDH6A1
Alternative Name:	ALDH6A1 (ALDH6A1 Products)
Background:	Description: This gene encodes a member of the aldehyde dehydrogenase protein family. The

Target Details

encoded protein is a mitochondrial methylmalonate semialdehyde dehydrogenase that plays a role in the valine and pyrimidine catabolic pathways. This protein catalyzes the irreversible oxidative decarboxylation of malonate and methylmalonate semialdehydes to acetyl- and propionyl-CoA. Methylmalonate semialdehyde dehydrogenase deficiency is characterized by elevated beta-alanine, 3-hydroxypropionic acid, and both isomers of 3-amino and 3-hydroxyisobutyric acids in urine organic acids. Alternate splicing results in multiple transcript variants.,

Aliases: MMSDH, MMSADHA

Molecular Weight: 57.8 kDa

Gene ID: 4329

HGNC: 4329

Pathways: [Brown Fat Cell Differentiation](#)

Application Details

Application Notes: ELISA: 1:10000, WB: 1:500 - 1:2000, IHC: 1:200 - 1:1000, ICC: 1:200 - 1:1000, FCM: 1:200 - 1:400

Restrictions: For Research Use only

Handling

Format: Liquid

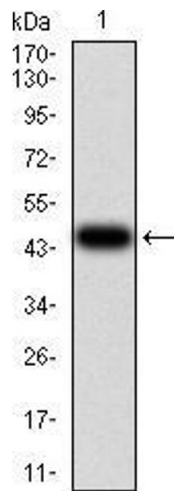
Buffer: Purified antibody in PBS with 0.05 % sodium azide

Preservative: Sodium azide

Precaution of Use: This product contains Sodium azide: a POISONOUS AND HAZARDOUS SUBSTANCE which should be handled by trained staff only.

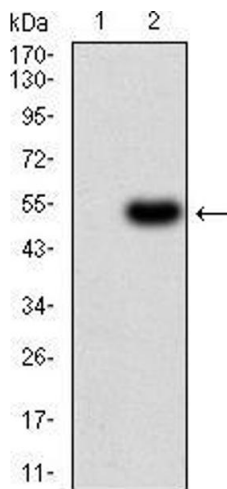
Storage: 4 °C/-20 °C

Storage Comment: 4°C, -20°C for long term storage



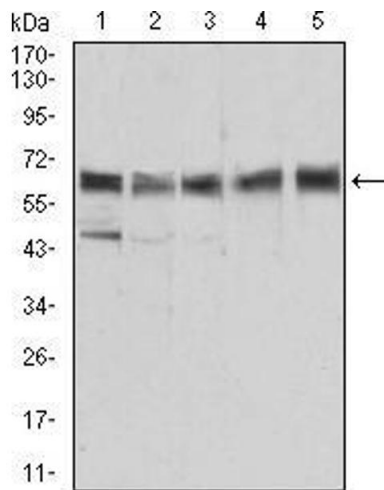
Western Blotting

Image 1. Western blot analysis using ALDH6A1 mAb against human ALDH6A1 (AA: 1-195) recombinant protein. (Expected MW is 47.2 kDa)



Western Blotting

Image 2. Western blot analysis using ALDH6A1 mAb against HEK293 (1) and ALDH6A1 (AA: 1-195)-hlgGfc transfected HEK293 (2) cell lysate.



Western Blotting

Image 3. Western blot analysis using ALDH6A1 mouse mAb against Jurkat (1), HEK293 (2), Hela (3), MCF-7 (4), and LNCap (5) cell lysate.

Please check the [product details page](#) for more images. Overall 9 images are available for ABIN5542265.