

Datasheet for ABIN5542271
anti-ATF3 antibody (AA 1-181)[Go to Product page](#)

4 Images

Overview

Quantity:	0.1 mg
Target:	ATF3
Binding Specificity:	AA 1-181
Reactivity:	Human
Host:	Mouse
Clonality:	Monoclonal
Conjugate:	This ATF3 antibody is un-conjugated
Application:	Western Blotting (WB), ELISA, Immunohistochemistry (IHC), Flow Cytometry (FACS), Immunocytochemistry (ICC)

Product Details

Immunogen:	Purified recombinant fragment of human ATF3 (AA: 1-181) expressed in E. coli.
Clone:	5A9B9
Isotype:	IgG1
Purification:	purified

Target Details

Target:	ATF3
Alternative Name:	ATF3 (ATF3 Products)
Background:	This gene encodes a member of the mammalian activation transcription factor/cAMP

Target Details

responsive element-binding (CREB) protein family of transcription factors. This gene is induced by a variety of signals, including many of those encountered by cancer cells, and is involved in the complex process of cellular stress response. Multiple transcript variants encoding different isoforms have been found for this gene. It is possible that alternative splicing of this gene may be physiologically important in the regulation of target genes.,

Molecular Weight: 20.6 kDa

Gene ID: 467

HGNC: 467

Pathways: [Myometrial Relaxation and Contraction](#), [ER-Nucleus Signaling](#), [Unfolded Protein Response](#)

Application Details

Application Notes: ELISA: 1:10000, WB: 1:500 - 1:2000, IHC: , ICC: , FCM: 1:200 - 1:400

Restrictions: For Research Use only

Handling

Format: Liquid

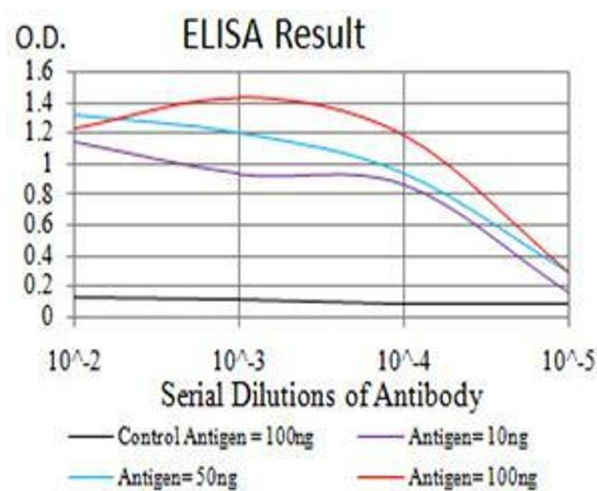
Buffer: Purified antibody in PBS with 0.05 % sodium azide

Preservative: Sodium azide

Precaution of Use: This product contains Sodium azide: a POISONOUS AND HAZARDOUS SUBSTANCE which should be handled by trained staff only.

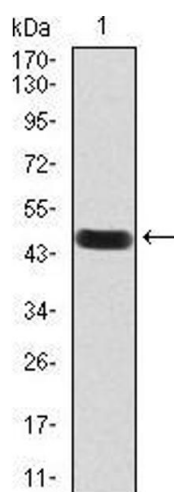
Storage: 4 °C/-20 °C

Storage Comment: 4°C, -20°C for long term storage



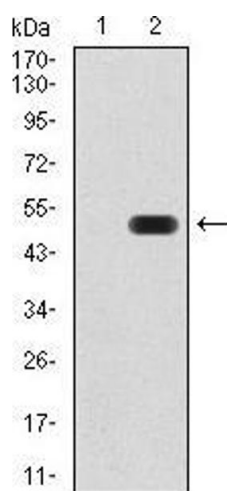
ELISA

Image 1. Black line: Control Antigen (100 ng), Purple line: Antigen(10 ng), Blue line: Antigen (50 ng), Red line: Antigen (100 ng),



Western Blotting

Image 2. Western blot analysis using ATF3 mAb against human ATF3 (AA: 1-181) recombinant protein. (Expected MW is *** kDa)



Western Blotting

Image 3. Western blot analysis using ATF3 mAb against HEK293 (1) and ATF3 (AA: 1-181)-hlgGfc transfected HEK293 (2) cell lysate.

Please check the [product details page](#) for more images. Overall 4 images are available for ABIN5542271.