

Datasheet for ABIN5542272  
**anti-ATF3 antibody (AA 1-181)**



[Go to Product page](#)

6 Images

## Overview

Quantity:	100 µL
Target:	ATF3
Binding Specificity:	AA 1-181
Reactivity:	Human
Host:	Mouse
Clonality:	Monoclonal
Conjugate:	This ATF3 antibody is un-conjugated
Application:	ELISA, Flow Cytometry (FACS), Immunocytochemistry (ICC)

## Product Details

Purpose:	ATF3 Antibody
Immunogen:	Purified recombinant fragment of human ATF3 (AA: 1-181) expressed in E. Coli.
Clone:	7F1B10
Isotype:	IgG1
Purification:	Purified antibody

## Target Details

Target:	ATF3
Alternative Name:	<a href="#">ATF3 (ATF3 Products)</a>
Background:	This gene encodes a member of the mammalian activation transcription factor/cAMP

## Target Details

---

responsive element-binding (CREB) protein family of transcription factors. This gene is induced by a variety of signals, including many of those encountered by cancer cells, and is involved in the complex process of cellular stress response. Multiple transcript variants encoding different isoforms have been found for this gene. It is possible that alternative splicing of this gene may be physiologically important in the regulation of target genes.

---

Molecular Weight: 20.6kDa

---

Gene ID: 467

---

HGNC: 467

---

UniProt: [P18847](#)

---

Pathways: [Myometrial Relaxation and Contraction](#), [ER-Nucleus Signaling](#), [Unfolded Protein Response](#)

## Application Details

---

Application Notes: ELISA: 1/10000  
FCM: 1/200 - 1/400  
ICC: 1/200 - 1/1000

---

Restrictions: For Research Use only

## Handling

---

Format: Liquid

---

Buffer: Purified antibody in PBS with 0.05 % sodium azide.

---

Preservative: Sodium azide

---

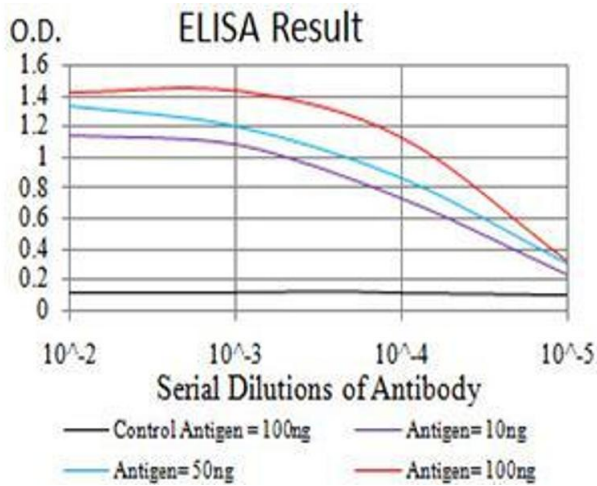
Precaution of Use: This product contains Sodium azide: a POISONOUS AND HAZARDOUS SUBSTANCE which should be handled by trained staff only.

---

Storage: 4 °C,-20 °C

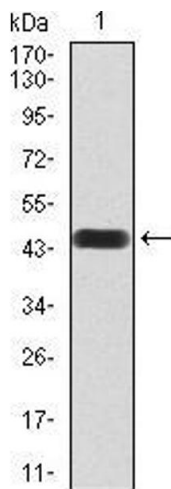
---

Storage Comment: Store at 4°C short term. Aliquot and store at -20°C long term. Avoid freeze/thaw cycles.



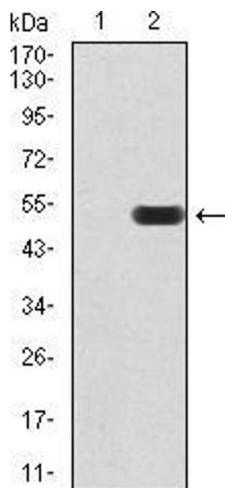
**ELISA**

**Image 1.** Black line: Control Antigen (100 ng), Purple line: Antigen(10 ng), Blue line: Antigen (50 ng), Red line: Antigen (100 ng),



**Western Blotting**

**Image 2.** Western blot analysis using ATF3 mAb against human ATF3 (AA: 1-181) recombinant protein. (Expected MW is 46.5 kDa)



**Western Blotting**

**Image 3.** Western blot analysis using ATF3 mAb against HEK293 (1) and ATF3 (AA: 1-181)-hlgGfc transfected HEK293 (2) cell lysate.

Please check the [product details page](#) for more images. Overall 6 images are available for ABIN5542272.