

Datasheet for ABIN5542281  
**anti-BIN1 antibody (AA 189-398)**

## 5 Images

[Go to Product page](#)

## Overview

Quantity:	0.1 mg
Target:	BIN1
Binding Specificity:	AA 189-398
Reactivity:	Human, Mouse
Host:	Mouse
Clonality:	Monoclonal
Conjugate:	This BIN1 antibody is un-conjugated
Application:	Western Blotting (WB), ELISA, Immunohistochemistry (IHC), Immunocytochemistry (ICC), Flow Cytometry (FACS)

## Product Details

Immunogen:	Purified recombinant fragment of human BIN1 (AA: 189-398) expressed in E. coli.
Clone:	3B6A4
Isotype:	IgG2b
Purification:	purified

## Target Details

Target:	BIN1
Alternative Name:	BIN1 ( <a href="#">BIN1 Products</a> )
Background:	Description: This gene encodes several isoforms of a nucleocytoplasmic adaptor protein, one

## Target Details

of which was initially identified as a MYC-interacting protein with features of a tumor suppressor. Isoforms that are expressed in the central nervous system may be involved in synaptic vesicle endocytosis and may interact with dynamin, synaptojanin, endophilin, and clathrin. Isoforms that are expressed in muscle and ubiquitously expressed isoforms localize to the cytoplasm and nucleus and activate a caspase-independent apoptotic process. Studies in mouse suggest that this gene plays an important role in cardiac muscle development. Alternate splicing of the gene results in several transcript variants encoding different isoforms. Aberrant splice variants expressed in tumor cell lines have also been described.,  
Aliases: AMPH2, AMPHL, SH3P9

Molecular Weight:	64.7 kDa
-------------------	----------

Gene ID:	274
----------	-----

HGNC:	274
-------	-----

## Application Details

Application Notes:	ELISA: 1:10000, WB: 1:500 - 1:2000, IHC: , ICC: , FCM: 1:200 - 1:400
--------------------	--

Restrictions:	For Research Use only
---------------	-----------------------

## Handling

Format:	Liquid
---------	--------

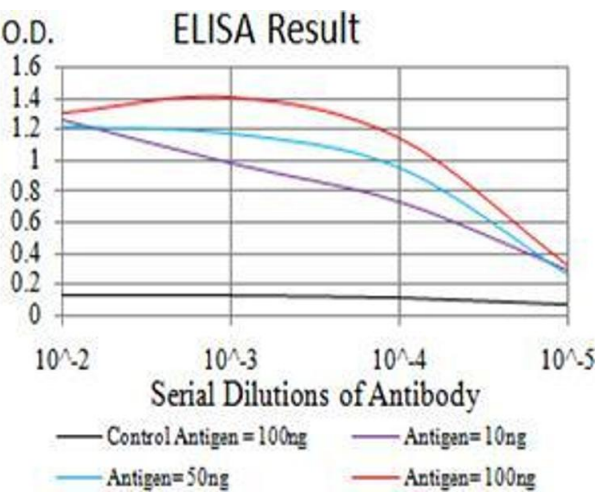
Buffer:	Purified antibody in PBS with 0.05 % sodium azide
---------	---

Preservative:	Sodium azide
---------------	--------------

Precaution of Use:	This product contains Sodium azide: a POISONOUS AND HAZARDOUS SUBSTANCE which should be handled by trained staff only.
--------------------	--

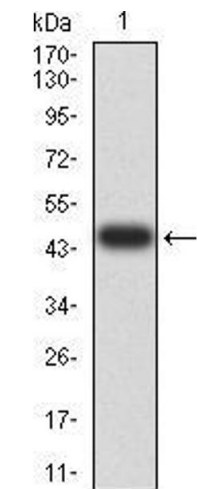
Storage:	4 °C/-20 °C
----------	-------------

Storage Comment:	4°C, -20°C for long term storage
------------------	----------------------------------



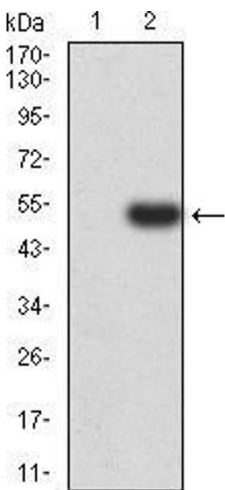
ELISA

**Image 1.** Black line: Control Antigen (100 ng);Purple line: Antigen (10ng); Blue line: Antigen (50 ng); Red line:Antigen (100 ng)



Western Blotting

**Image 2.** Western blot analysis using BIN1 mAb against human BIN1 (AA: 189-398) recombinant protein. (Expected MW is 47.1 kDa)



Western Blotting

**Image 3.** Western blot analysis using BIN1 mAb against HEK293 (1) and BIN1 (AA: 189-398)-hlgGFc transfected HEK293 (2) cell lysate.

Please check the [product details page](#) for more images. Overall 5 images are available for ABIN5542281.