

Datasheet for ABIN5542283
anti-BMP2 antibody (AA 283-396)



[Go to Product page](#)

5 Images

Overview

Quantity:	0.1 mg
Target:	BMP2
Binding Specificity:	AA 283-396
Reactivity:	Human
Host:	Mouse
Clonality:	Monoclonal
Conjugate:	This BMP2 antibody is un-conjugated
Application:	Western Blotting (WB), Immunohistochemistry (IHC), ELISA, Immunocytochemistry (ICC), Flow Cytometry (FACS)

Product Details

Immunogen:	Purified recombinant fragment of human BMP2 (AA: 283-396) expressed in E. coli.
Clone:	9E10D6
Isotype:	IgG1
Purification:	purified

Target Details

Target:	BMP2
Alternative Name:	BMP2 (BMP2 Products)
Background:	Description: The protein encoded by this gene belongs to the transforming growth factor-beta

Target Details

(TGFB) superfamily. The encoded protein acts as a disulfide-linked homodimer and induces bone and cartilage formation.,

Aliases: BDA2, BMP2A

Molecular Weight: 44.7 kDa

Gene ID: 650

HGNC: 650

Pathways: [Regulation of Hormone Metabolic Process](#), [Regulation of Hormone Biosynthetic Process](#), [Regulation of Muscle Cell Differentiation](#), [Growth Factor Binding](#), [Positive Regulation of fat Cell Differentiation](#)

Application Details

Application Notes: ELISA: 1:10000, WB: 1:500 - 1:2000, IHC: , ICC: , FCM: 1:200 - 1:400

Restrictions: For Research Use only

Handling

Format: Liquid

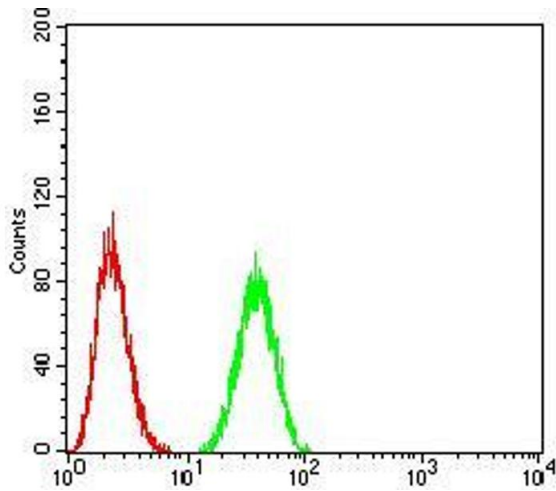
Buffer: Purified antibody in PBS with 0.05 % sodium azide

Preservative: Sodium azide

Precaution of Use: This product contains Sodium azide: a POISONOUS AND HAZARDOUS SUBSTANCE which should be handled by trained staff only.

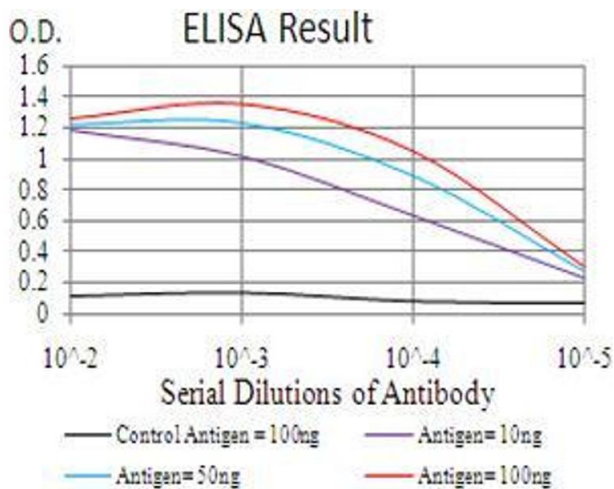
Storage: 4 °C/-20 °C

Storage Comment: 4°C, -20°C for long term storage



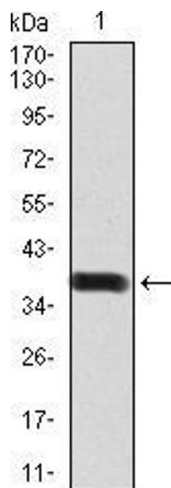
Flow Cytometry

Image 1. Flow cytometric analysis of A549 cells using BMP2 mouse mAb (green) and negative control (red).



ELISA

Image 2. Black line: Control Antigen (100 ng), Purple line: Antigen(10 ng), Blue line: Antigen (50 ng), Red line: Antigen (100 ng),



Western Blotting

Image 3. Western blot analysis using BMP2 mAb against human BMP2 (AA: 283-396) recombinant protein. (Expected MW is 38.7 kDa)

Please check the [product details page](#) for more images. Overall 5 images are available for ABIN5542283.