

Datasheet for ABIN5542290
anti-BRD2 antibody (AA 227-364)[Go to Product page](#)

3 Images

Overview

Quantity:	0.1 mg
Target:	BRD2
Binding Specificity:	AA 227-364
Reactivity:	Human
Host:	Mouse
Clonality:	Monoclonal
Conjugate:	This BRD2 antibody is un-conjugated
Application:	Western Blotting (WB), ELISA, Immunohistochemistry (IHC), Immunocytochemistry (ICC), Flow Cytometry (FACS)

Product Details

Immunogen:	Purified recombinant fragment of human BRD2 (AA: 227-364) expressed in E. coli.
Clone:	1H6B12
Isotype:	IgG1
Purification:	purified

Target Details

Target:	BRD2
Alternative Name:	BRD2 (BRD2 Products)
Background:	Description: This gene encodes a transcriptional regulator that belongs to the BET

Target Details

(bromodomains and extra terminal domain) family of proteins. This protein associates with transcription complexes and with acetylated chromatin during mitosis, and it selectively binds to the acetylated lysine-12 residue of histone H4 via its two bromodomains. The gene maps to the major histocompatibility complex (MHC) class II region on chromosome 6p21.3, but sequence comparison suggests that the protein is not involved in the immune response. This gene has been implicated in juvenile myoclonic epilepsy, a common form of epilepsy that becomes apparent in adolescence. Multiple alternatively spliced variants have been described for this gene.,

Aliases: FSH, NAT, RNF3, FSRG1, RING3, D6S113E, O27.1.1

Molecular Weight: 88 kDa

Gene ID: 6046

HGNC: 6648

Pathways: [Chromatin Binding](#), [SARS-CoV-2 Protein Interactome](#), [The Global Phosphorylation Landscape of SARS-CoV-2 Infection](#)

Application Details

Application Notes: ELISA: 1:10000, WB: 1:500 - 1:2000, IHC: , ICC: , FCM:

Restrictions: For Research Use only

Handling

Format: Liquid

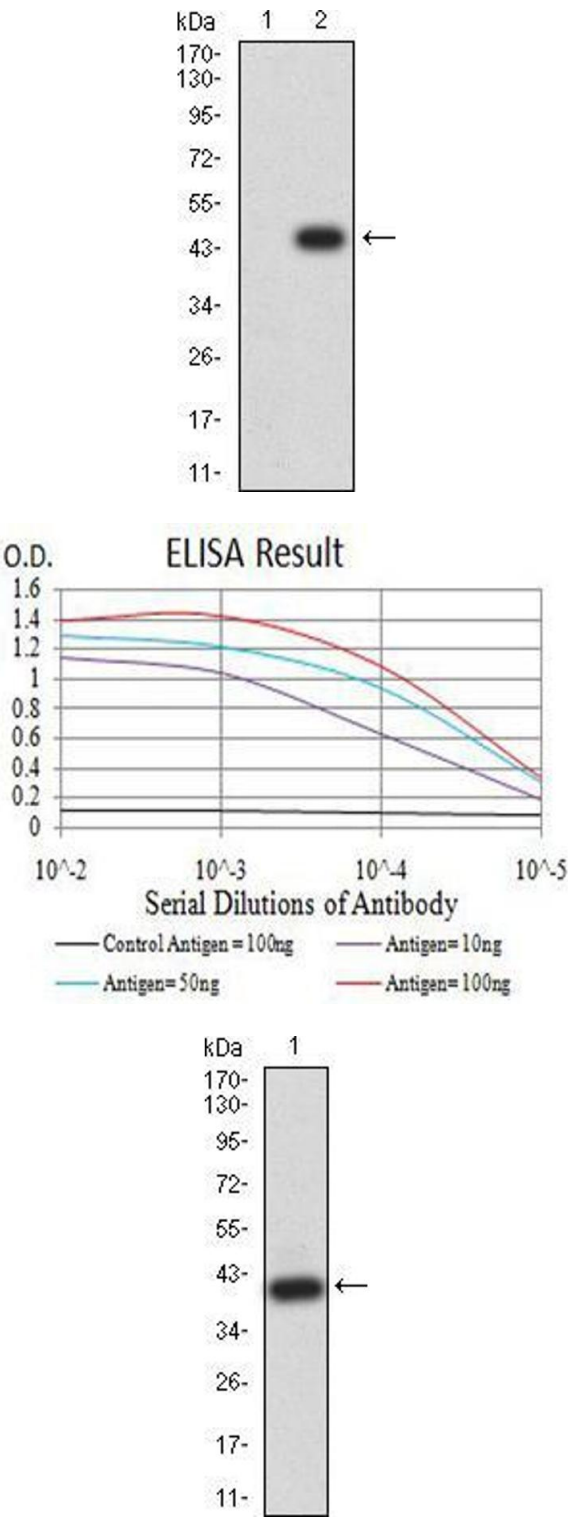
Buffer: Purified antibody in PBS with 0.05 % sodium azide

Preservative: Sodium azide

Precaution of Use: This product contains Sodium azide: a POISONOUS AND HAZARDOUS SUBSTANCE which should be handled by trained staff only.

Storage: 4 °C/-20 °C

Storage Comment: 4°C, -20°C for long term storage



Western Blotting

Image 1. Western blot analysis using BRD2 mAb against HEK293 (1) and BRD2 (AA: 227-364)-hIgGFc transfected HEK293 (2) cell lysate.

ELISA

Image 2. Black line: Control Antigen (100 ng),Purple line: Antigen (10 ng), Blue line: Antigen (50 ng), Red line:Antigen (100 ng)

Western Blotting

Image 3. Western blot analysis using BRD2 mAb against human BRD2 (AA: 227-364) recombinant protein. (Expected MW is 40.6 kDa)