

Datasheet for ABIN5542291
anti-BRD2 antibody (AA 227-364)

5 Images

[Go to Product page](#)

Overview

Quantity:	0.1 mg
Target:	BRD2
Binding Specificity:	AA 227-364
Reactivity:	Human, Rat
Host:	Mouse
Clonality:	Monoclonal
Conjugate:	This BRD2 antibody is un-conjugated
Application:	Western Blotting (WB), ELISA, Immunohistochemistry (IHC), Immunocytochemistry (ICC), Flow Cytometry (FACS)

Product Details

Immunogen:	Purified recombinant fragment of human BRD2 (AA: 227-364) expressed in E. coli.
Clone:	7C1B10
Isotype:	IgG2b
Purification:	purified

Target Details

Target:	BRD2
Alternative Name:	BRD2 (BRD2 Products)
Background:	Description: This gene encodes a transcriptional regulator that belongs to the BET

Target Details

(bromodomains and extra terminal domain) family of proteins. This protein associates with transcription complexes and with acetylated chromatin during mitosis, and it selectively binds to the acetylated lysine-12 residue of histone H4 via its two bromodomains. The gene maps to the major histocompatibility complex (MHC) class II region on chromosome 6p21.3, but sequence comparison suggests that the protein is not involved in the immune response. This gene has been implicated in juvenile myoclonic epilepsy, a common form of epilepsy that becomes apparent in adolescence. Multiple alternatively spliced variants have been described for this gene.,

Aliases: FSH, NAT, RNF3, FSRG1, RING3, D6S113E, O27.1.1

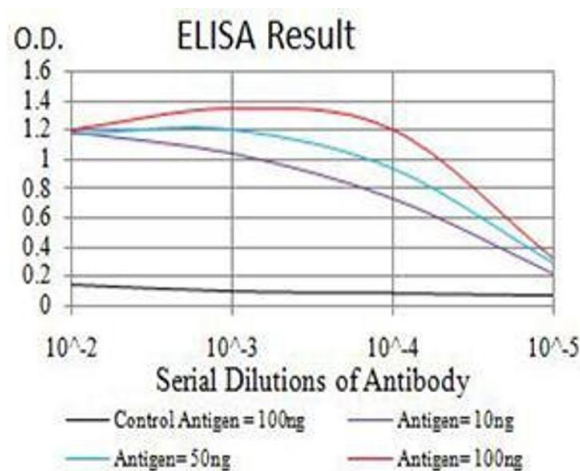
Molecular Weight:	88 kDa
Gene ID:	6046
HGNC:	2101
Pathways:	Chromatin Binding , SARS-CoV-2 Protein Interactome , The Global Phosphorylation Landscape of SARS-CoV-2 Infection

Application Details

Application Notes:	ELISA: 1:10000, WB: 1:500 - 1:2000, IHC: , ICC: , FCM: 1:200 - 1:400
Restrictions:	For Research Use only

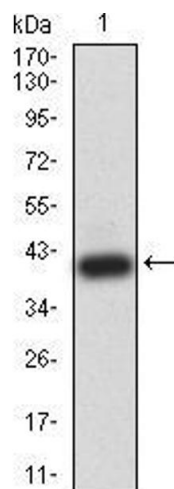
Handling

Format:	Liquid
Buffer:	Purified antibody in PBS with 0.05 % sodium azide
Preservative:	Sodium azide
Precaution of Use:	This product contains Sodium azide: a POISONOUS AND HAZARDOUS SUBSTANCE which should be handled by trained staff only.
Storage:	4 °C/-20 °C
Storage Comment:	4°C, -20°C for long term storage



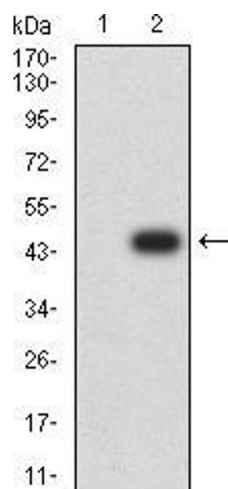
ELISA

Image 1. Black line: Control Antigen (100 ng),Purple line: Antigen (10 ng), Blue line: Antigen (50 ng), Red line:Antigen (100 ng)



Western Blotting

Image 2. Western blot analysis using BRD2 mAb against human BRD2 (AA: 227-364) recombinant protein. (Expected MW is 40.6 kDa)



Western Blotting

Image 3. Western blot analysis using BRD2 mAb against HEK293 (1) and BRD2 (AA: 227-364)-hlgGfC transfected HEK293 (2) cell lysate.

Please check the [product details page](#) for more images. Overall 5 images are available for ABIN5542291.