



[Go to Product page](#)

Datasheet for ABIN5542296  
**anti-CD2 antibody (AA 25-140)**

8 Images

### Overview

Quantity:	0.1 mg
Target:	CD2
Binding Specificity:	AA 25-140
Reactivity:	Mouse
Host:	Mouse
Clonality:	Monoclonal
Conjugate:	This CD2 antibody is un-conjugated
Application:	Flow Cytometry (FACS), Western Blotting (WB), ELISA, Immunohistochemistry (IHC), Immunocytochemistry (ICC)

### Product Details

Immunogen:	Purified recombinant fragment of human CD2 (AA: 25-140) expressed in E. coli.
Clone:	3D1E3
Isotype:	IgG1
Purification:	purified

### Target Details

Target:	CD2
Alternative Name:	CD2 ( <a href="#">CD2 Products</a> )
Background:	Description: CD2 is a surface antigen of the human T-lymphocyte lineage that is expressed on

## Target Details

---

all peripheral blood T cells (summarized by Sewell et al., 1986 [PubMed 3490670]). It is one of the earliest T-cell markers, being present on more than 95 % of thymocytes, it is also found on some natural killer cells but not on B lymphocytes. Monoclonal antibodies directed against CD2 inhibit the formation of rosettes with sheep erythrocytes, indicating that CD2 is the erythrocyte receptor or is closely associated with it,

Aliases: T11, SRBC, LFA-2

---

Molecular Weight: 39.4 kDa

---

Gene ID: 914

---

HGNC: 914

## Application Details

---

Application Notes: ELISA: 1:10000, WB: 1:500 - 1:2000, IHC: 1:200 - 1:1000, ICC: , FCM: 1:200 - 1:400

---

Restrictions: For Research Use only

## Handling

---

Format: Liquid

---

Buffer: Purified antibody in PBS with 0.05 % sodium azide

---

Preservative: Sodium azide

---

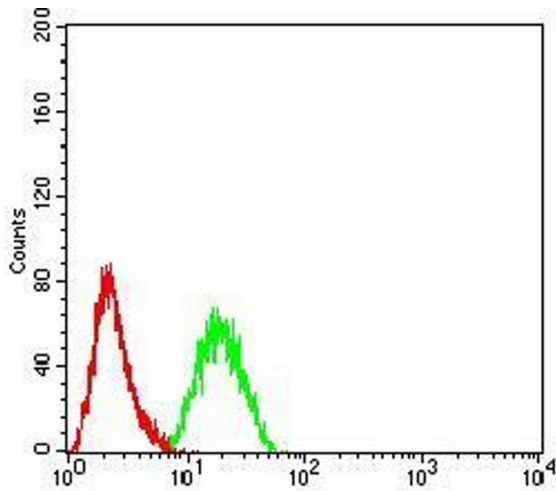
Precaution of Use: This product contains Sodium azide: a POISONOUS AND HAZARDOUS SUBSTANCE which should be handled by trained staff only.

---

Storage: 4 °C/-20 °C

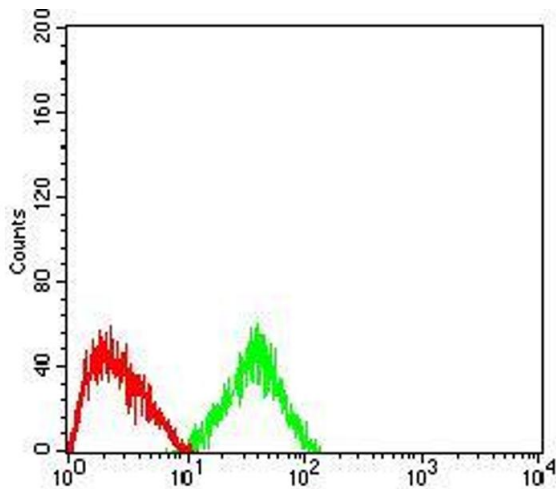
---

Storage Comment: 4°C, -20°C for long term storage



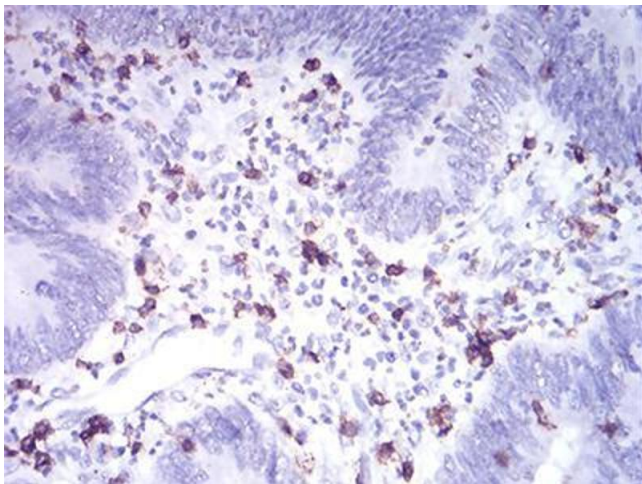
### Flow Cytometry

**Image 1.** Flow cytometric analysis of HeLa cells using CD2 mouse mAb (green) and negative control (red).



### Flow Cytometry

**Image 2.** Flow cytometric analysis of HepG2 cells using CD2 mouse mAb (green) and negative control (red).



### Immunohistochemistry

**Image 3.** Immunohistochemical analysis of paraffin-embedded rectum cancer tissues using CD2 mouse mAb with DAB staining.

Please check the [product details page](#) for more images. Overall 8 images are available for ABIN5542296.