

Datasheet for ABIN5542297  
**anti-CD2 antibody (AA 25-140)**[Go to Product page](#)

## 7 Images

## Overview

Quantity:	0.1 mg
Target:	CD2
Binding Specificity:	AA 25-140
Reactivity:	Human, Mouse
Host:	Mouse
Clonality:	Monoclonal
Conjugate:	This CD2 antibody is un-conjugated
Application:	Flow Cytometry (FACS), Western Blotting (WB), ELISA, Immunohistochemistry (IHC), Immunocytochemistry (ICC)

## Product Details

Immunogen:	Purified recombinant fragment of human CD2 (AA: 25-140) expressed in E. coli.
Clone:	3D1B4
Isotype:	IgG1
Purification:	purified

## Target Details

Target:	CD2
Alternative Name:	CD2 ( <a href="#">CD2 Products</a> )
Background:	Description: CD2 is a surface antigen of the human T-lymphocyte lineage that is expressed on

## Target Details

all peripheral blood T cells (summarized by Sewell et al., 1986 [PubMed 3490670]). It is one of the earliest T-cell markers, being present on more than 95 % of thymocytes, it is also found on some natural killer cells but not on B lymphocytes. Monoclonal antibodies directed against CD2 inhibit the formation of rosettes with sheep erythrocytes, indicating that CD2 is the erythrocyte receptor or is closely associated with it.,

Aliases: T11, SRBC, LFA-2

Molecular Weight:	39.4 kDa
-------------------	----------

Gene ID:	914
----------	-----

HGNC:	914
-------	-----

## Application Details

Application Notes:	ELISA: 1:10000, WB: 1:500 - 1:2000, IHC: 1:200 - 1:1000, ICC: , FCM: 1:200 - 1:400
--------------------	--

Restrictions:	For Research Use only
---------------	-----------------------

## Handling

Format:	Liquid
---------	--------

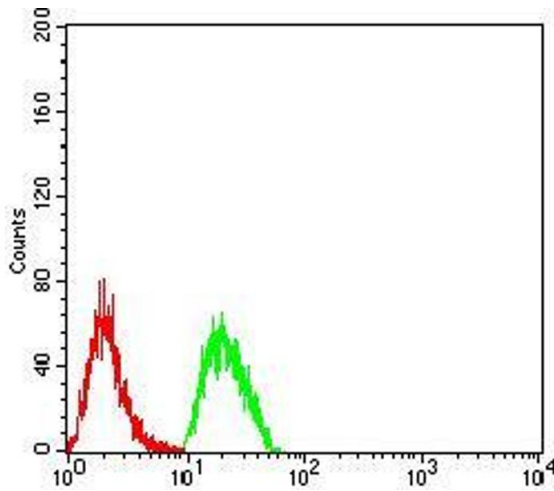
Buffer:	Purified antibody in PBS with 0.05 % sodium azide
---------	---

Preservative:	Sodium azide
---------------	--------------

Precaution of Use:	This product contains Sodium azide: a POISONOUS AND HAZARDOUS SUBSTANCE which should be handled by trained staff only.
--------------------	--

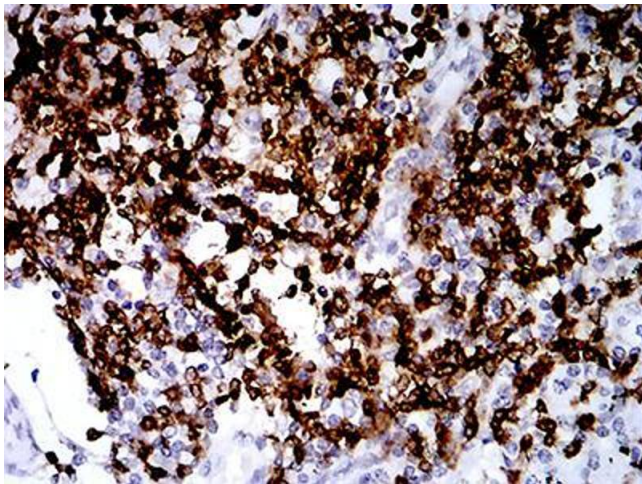
Storage:	4 °C/-20 °C
----------	-------------

Storage Comment:	4°C, -20°C for long term storage
------------------	----------------------------------



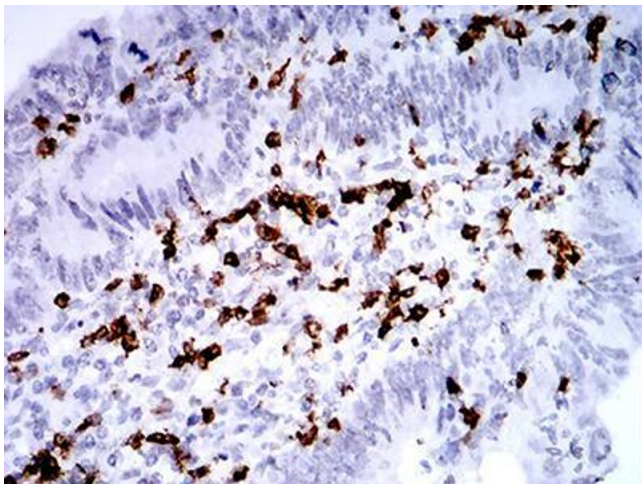
#### Flow Cytometry

**Image 1.** Flow cytometric analysis of Hela cells using CD2 mouse mAb (green) and negative control (red).



#### Immunohistochemistry

**Image 2.** Immunohistochemical analysis of paraffin-embedded lung cancer tissues using CD2 mouse mAb with DAB staining.



#### Immunohistochemistry

**Image 3.** Immunohistochemical analysis of paraffin-embedded rectum cancer tissues using CD2 mouse mAb with DAB staining.

Please check the [product details page](#) for more images. Overall 7 images are available for ABIN5542297.