



[Go to Product page](#)

Datasheet for ABIN5542301
anti-CD6 antibody (AA 18-199)

7 Images

Overview

Quantity:	0.1 mg
Target:	CD6
Binding Specificity:	AA 18-199
Reactivity:	Human
Host:	Mouse
Clonality:	Monoclonal
Conjugate:	This CD6 antibody is un-conjugated
Application:	Flow Cytometry (FACS), Western Blotting (WB), Immunohistochemistry (IHC), ELISA, Immunocytochemistry (ICC)

Product Details

Immunogen:	Purified recombinant fragment of human CD6 (AA: 18-199) expressed in E. coli.
Clone:	5A10A2
Isotype:	IgG2b
Purification:	purified

Target Details

Target:	CD6
Alternative Name:	CD6 (CD6 Products)
Background:	Description: This gene encodes a protein found on the outer membrane of T-lymphocytes as

Target Details

well as some other immune cells. The encoded protein contains three scavenger receptor cysteine-rich (SRCR) domains and a binding site for an activated leukocyte cell adhesion molecule. The gene product is important for continuation of T cell activation. This gene may be associated with susceptibility to multiple sclerosis (PMID: 19525953, 21849685). Multiple transcript variants encoding different isoforms have been found for this gene.,

Aliases: TP120, FLJ44171

Molecular Weight:	71.8 kDa
-------------------	----------

Gene ID:	923
----------	-----

HGNC:	923
-------	-----

Application Details

Application Notes:	ELISA: 1:10000, WB: 1:500 - 1:2000, IHC: 1:200 - 1:1000, ICC: 1:200 - 1:1000, FCM: 1:200 - 1:400
--------------------	--

Restrictions:	For Research Use only
---------------	-----------------------

Handling

Format:	Liquid
---------	--------

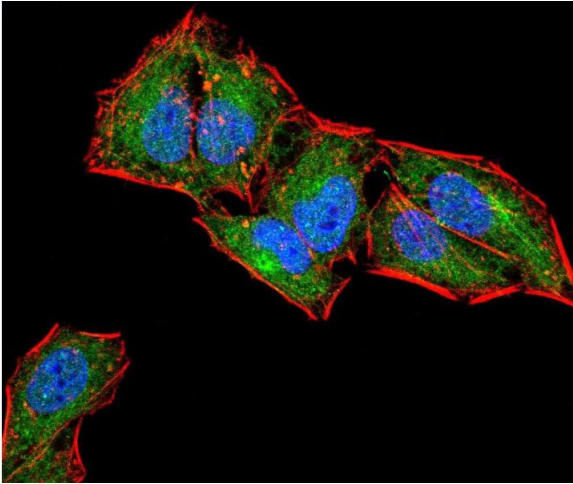
Buffer:	Purified antibody in PBS with 0.05 % sodium azide
---------	---

Preservative:	Sodium azide
---------------	--------------

Precaution of Use:	This product contains Sodium azide: a POISONOUS AND HAZARDOUS SUBSTANCE which should be handled by trained staff only.
--------------------	--

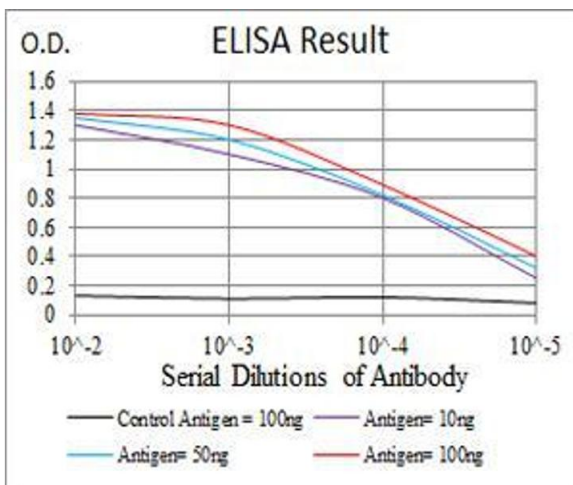
Storage:	4 °C/-20 °C
----------	-------------

Storage Comment:	4°C, -20°C for long term storage
------------------	----------------------------------



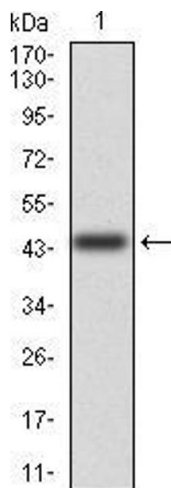
Immunofluorescence

Image 1. Immunofluorescence analysis of HeLa cells using CD6 mouse mAb (green). Blue: DRAQ5 fluorescent DNA dye. Red: Actin filaments have been labeled with Alexa Fluor- 555 phalloidin. Secondary antibody from Fisher (Cat#: 35503)



ELISA

Image 2. Black line: Control Antigen (100 ng), Purple line: Antigen(10 ng), Blue line: Antigen (50 ng), Red line: Antigen (100 ng),



Western Blotting

Image 3. Western blot analysis using CD6 mAb against human CD6(AA: 18-199) recombinant protein. (Expected MW is 44.8 kDa)

Please check the [product details page](#) for more images. Overall 7 images are available for ABIN5542301.