

Datasheet for ABIN5542308
anti-C1QA antibody (AA 23-167)

5 Images

[Go to Product page](#)

Overview

Quantity:	0.1 mg
Target:	C1QA
Binding Specificity:	AA 23-167
Reactivity:	Human
Host:	Mouse
Clonality:	Monoclonal
Conjugate:	This C1QA antibody is un-conjugated
Application:	Western Blotting (WB), Immunohistochemistry (IHC), ELISA, Immunocytochemistry (ICC), Flow Cytometry (FACS)

Product Details

Immunogen:	Purified recombinant fragment of human C1QA (AA 23-167) expressed in E. Coli.
Clone:	1C7G3
Isotype:	IgG2b

Target Details

Target:	C1QA
Alternative Name:	C1QA (C1QA Products)
Background:	This gene encodes a major constituent of the human complement subcomponent C1q. C1q associates with C1r and C1s in order to yield the first component of the serum complement system. Deficiency of C1q has been associated with lupus erythematosus and

Target Details

glomerulonephritis. C1q is composed of 18 polypeptide chains: six A-chains, six B-chains, and six C-chains. Each chain contains a collagen-like region located near the N terminus and a C-terminal globular region. The A-, B-, and C-chains are arranged in the order A-C-B on chromosome 1. This gene encodes the A-chain polypeptide of human complement subcomponent C1q.,

Molecular Weight: 33.7kDa

HGNC: 595

Pathways: [Complement System](#)

Application Details

Application Notes: ELISA: 1:10000, WB: 1:500 - 1:2000, IHC: 1:200 - 1:1000, ICC: , FCM: 1:200 - 1:400

Restrictions: For Research Use only

Handling

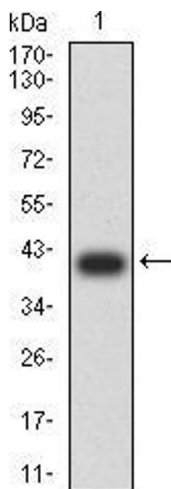
Format: Liquid

Buffer: PBS with 0.05 % sodium azide

Storage: 4 °C, -20 °C

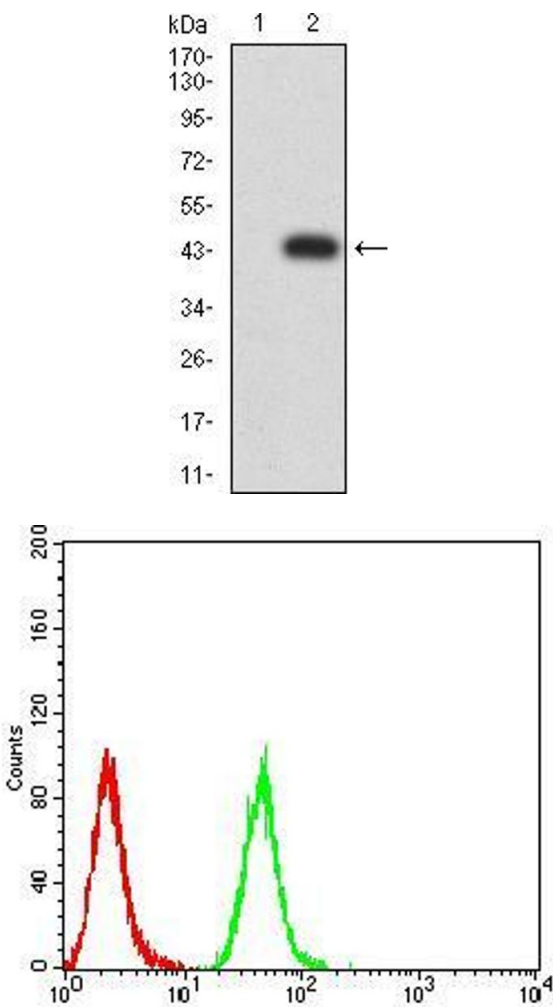
Storage Comment: 4°C, -20°C for long term storage

Validation report #103821 for Proximity Ligation Assay (PLA)



Western Blotting

Image 1. Western blot analysis using C1QA mAb against human C1QA (AA: 23-167) recombinant protein. (Expected MW is 40.6 kDa)



Western Blotting

Image 2. Western blot analysis using C1QA mAb against HEK293 (1) and C1QA (AA: 23-167)-hlgGFc transfected HEK293 (2) cell lysate.

Flow Cytometry

Image 3. Flow cytometric analysis of Hela cells using C1QA mouse mAb (green) and negative control (red).

Please check the [product details page](#) for more images. Overall 5 images are available for ABIN5542308.