

Datasheet for ABIN5542317  
**anti-FOXM1 antibody (AA 649-748)**[Go to Product page](#)

## 4 Images

## Overview

Quantity:	0.1 mg
Target:	FOXM1
Binding Specificity:	AA 649-748
Reactivity:	Human
Host:	Mouse
Clonality:	Monoclonal
Conjugate:	This FOXM1 antibody is un-conjugated
Application:	Western Blotting (WB), ELISA, Immunohistochemistry (IHC), Immunocytochemistry (ICC), Flow Cytometry (FACS)

## Product Details

Immunogen:	Purified recombinant fragment of human FOXM1 (AA: 649-748) expressed in E. coli.
Clone:	6F11A8
Isotype:	IgG1
Purification:	purified

## Target Details

Target:	FOXM1
Alternative Name:	FOXM1 ( <a href="#">FOXM1 Products</a> )
Background:	Description: The protein encoded by this gene is a transcriptional activator involved in cell

## Target Details

proliferation. The encoded protein is phosphorylated in M phase and regulates the expression of several cell cycle genes, such as cyclin B1 and cyclin D1. Several transcript variants encoding different isoforms have been found for this gene.,

Aliases: MPP2, TGT3, HFH11, HNF-3, INS-1, MPP-2, PIG29, FKHL16, FOXM1B, HFH-11, TRIDENT, MPHOSPH2

Molecular Weight: 84.3 kDa

Gene ID: 2305

HGNC: 2305

Pathways: [Positive Regulation of Response to DNA Damage Stimulus](#)

## Application Details

Application Notes: ELISA: 1:10000, WB: 1:500 - 1:2000, IHC: , ICC: , FCM: 1:200 - 1:400

Restrictions: For Research Use only

## Handling

Format: Liquid

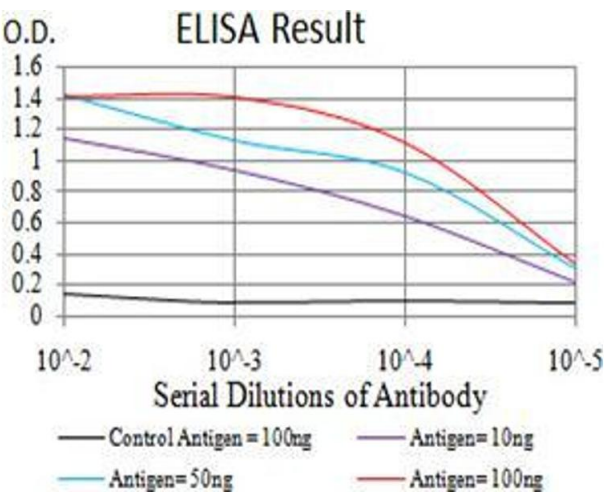
Buffer: Purified antibody in PBS with 0.05 % sodium azide

Preservative: Sodium azide

Precaution of Use: This product contains Sodium azide: a POISONOUS AND HAZARDOUS SUBSTANCE which should be handled by trained staff only.

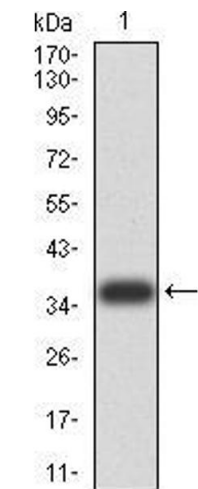
Storage: 4 °C/-20 °C

Storage Comment: 4°C, -20°C for long term storage



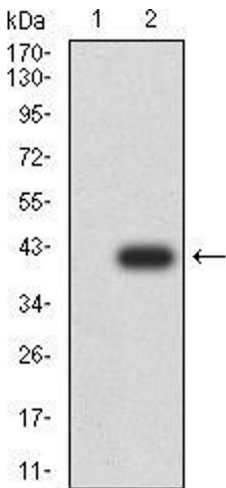
**ELISA**

**Image 1.** Black line: Control Antigen (100 ng), Purple line: Antigen(10 ng), Blue line: Antigen (50 ng), Red line: Antigen (100 ng),



**Western Blotting**

**Image 2.** Western blot analysis using FOXM1 mAb against human FOXM1 (AA: 649-748) recombinant protein. (Expected MW is 36.6 kDa)



**Western Blotting**

**Image 3.** Western blot analysis using FOXM1 mAb against HEK293 (1) and FOXM1 (AA: 649-748)-hlgGfc transfected HEK293 (2) cell lysate.

Please check the [product details page](#) for more images. Overall 4 images are available for ABIN5542317.