



[Go to Product page](#)

Datasheet for ABIN5542319

anti-Growth Hormone 1 antibody (AA 1-217)

4 Images

Overview

Quantity:	0.1 mg
Target:	Growth Hormone 1 (GH1)
Binding Specificity:	AA 1-217
Reactivity:	Human
Host:	Mouse
Clonality:	Monoclonal
Conjugate:	This Growth Hormone 1 antibody is un-conjugated
Application:	Immunohistochemistry (IHC), Western Blotting (WB), ELISA, Flow Cytometry (FACS), Immunocytochemistry (ICC)

Product Details

Immunogen:	Purified recombinant fragment of human GH1 (AA 1-217) expressed in E. Coli.
Clone:	3H1C2
Isotype:	IgG1

Target Details

Target:	Growth Hormone 1 (GH1)
Alternative Name:	GH1 (GH1 Products)
Background:	The protein encoded by this gene is a member of the somatotropin/prolactin family of hormones which play an important role in growth control. The gene, along with four other related genes, is located at the growth hormone locus on chromosome 17 where they are

Target Details

interspersed in the same transcriptional orientation, an arrangement which is thought to have evolved by a series of gene duplications. The five genes share a remarkably high degree of sequence identity. Alternative splicing generates additional isoforms of each of the five growth hormones, leading to further diversity and potential for specialization. This particular family member is expressed in the pituitary but not in placental tissue as is the case for the other four genes in the growth hormone locus. Mutations in or deletions of the gene lead to growth hormone deficiency and short stature.,

Molecular Weight: 24.8 kDa

HGNC: 11140

Pathways: [NF-kappaB Signaling](#), [JAK-STAT Signaling](#), [Intracellular Steroid Hormone Receptor Signaling Pathway](#), [Peptide Hormone Metabolism](#), [Regulation of Intracellular Steroid Hormone Receptor Signaling](#), [Regulation of Hormone Metabolic Process](#), [Response to Growth Hormone Stimulus](#), [Regulation of Hormone Biosynthetic Process](#)

Application Details

Application Notes: ELISA: 1:10000, WB: 1:500 - 1:2000, IHC: , ICC: , FCM: 1:200 - 1:400

Restrictions: For Research Use only

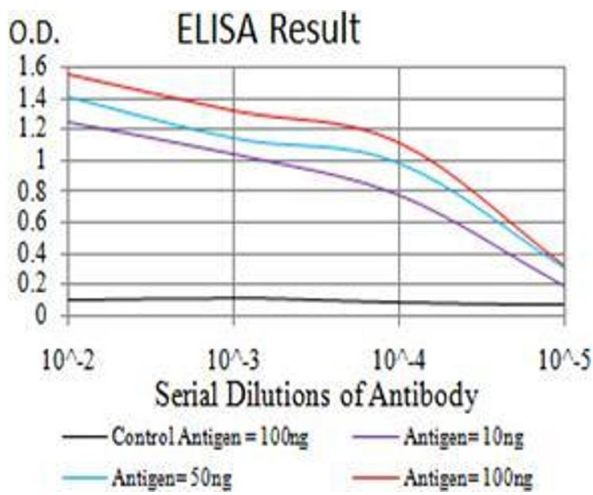
Handling

Format: Liquid

Buffer: PBS with 0.05 % sodium azide

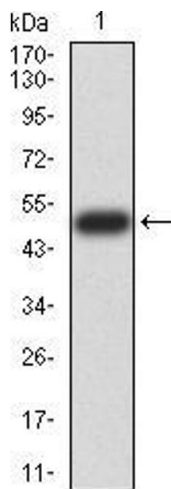
Storage: 4 °C,-20 °C

Storage Comment: 4°C, -20°C for long term storage



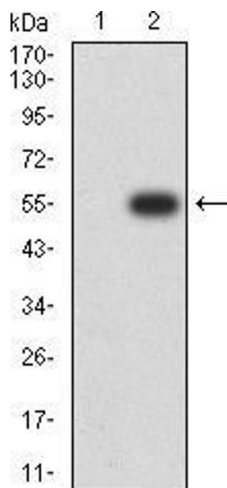
ELISA

Image 1. Black line: Control Antigen (100 ng);Purple line: Antigen (10ng); Blue line: Antigen (50 ng); Red line:Antigen (100 ng)



Western Blotting

Image 2. Western blot analysis using GH1 mAb against human GH1 (AA: 1-217) recombinant protein. (Expected MW is 50.8 kDa)



Western Blotting

Image 3. Western blot analysis using GH1 mAb against HEK293 (1) and GH1 (AA: 1-217)-hIgGFc transfected HEK293 (2) cell lysate.

Please check the [product details page](#) for more images. Overall 4 images are available for ABIN5542319.