

Datasheet for ABIN5542333
anti-L-Selectin antibody (AA 83-186)

5 Images

[Go to Product page](#)

Overview

Quantity:	0.1 mg
Target:	L-Selectin (SELL)
Binding Specificity:	AA 83-186
Reactivity:	Human
Host:	Mouse
Clonality:	Monoclonal
Conjugate:	This L-Selectin antibody is un-conjugated
Application:	Flow Cytometry (FACS), Immunohistochemistry (IHC), Western Blotting (WB), ELISA, Immunocytochemistry (ICC)

Product Details

Immunogen:	Purified recombinant fragment of human SELL (AA: 83-186) expressed in E. coli.
Clone:	8C8B7
Isotype:	IgG1
Purification:	purified

Target Details

Target:	L-Selectin (SELL)
Alternative Name:	SELL (SELL Products)
Target Type:	Chemical

Target Details

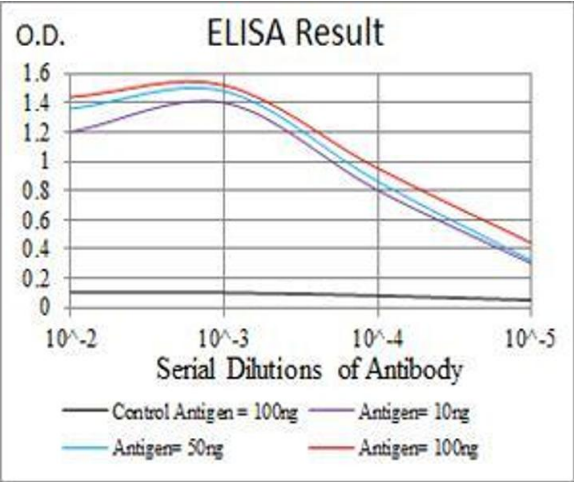
Background:	<p>Description: This gene encodes a cell surface adhesion molecule that belongs to a family of adhesion/homing receptors. The encoded protein contains a C-type lectin-like domain, a calcium-binding epidermal growth factor-like domain, and two short complement-like repeats. The gene product is required for binding and subsequent rolling of leucocytes on endothelial cells, facilitating their migration into secondary lymphoid organs and inflammation sites. Single-nucleotide polymorphisms in this gene have been associated with various diseases including immunoglobulin A nephropathy. Alternatively spliced transcript variants have been found for this gene. ,</p> <p>Aliases: TQ1, LAM1, LEU8, LNHR, LSEL, CD62L, LYAM1, PLNHR, LECAM1</p>
Molecular Weight:	42.2 kDa
Gene ID:	6402
HGNC:	6402

Application Details

Application Notes:	ELISA: 1:10000, WB: 1:500 - 1:2000, IHC: , ICC: 1:200 - 1:1000, FCM:
Restrictions:	For Research Use only

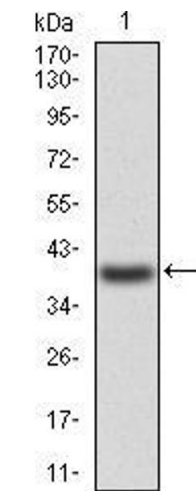
Handling

Format:	Liquid
Buffer:	Purified antibody in PBS with 0.05 % sodium azide
Preservative:	Sodium azide
Precaution of Use:	This product contains Sodium azide: a POISONOUS AND HAZARDOUS SUBSTANCE which should be handled by trained staff only.
Storage:	4 °C/-20 °C
Storage Comment:	4°C, -20°C for long term storage



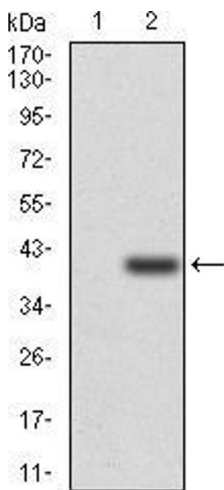
ELISA

Image 1. Black line: Control Antigen (100 ng), Purple line: Antigen(10 ng), Blue line: Antigen (50 ng), Red line: Antigen (100 ng),



Western Blotting

Image 2. Western blot analysis using SELL mAb against human SELL (AA: 83-186) recombinant protein. (Expected MW is 37.4 kDa)



Western Blotting

Image 3. Western blot analysis using SELL mAb against HEK293 (1) and SELL (AA:83-186)-hIgGFc transfected HEK293 (2) cell lysate.

Please check the [product details page](#) for more images. Overall 5 images are available for ABIN5542333.