

Datasheet for ABIN5542334
anti-LDLR antibody (AA 22-150)

5 Images

[Go to Product page](#)

Overview

Quantity:	0.1 mg
Target:	LDLR
Binding Specificity:	AA 22-150
Reactivity:	Human
Host:	Mouse
Clonality:	Monoclonal
Conjugate:	This LDLR antibody is un-conjugated
Application:	Western Blotting (WB), ELISA, Flow Cytometry (FACS), Immunohistochemistry (IHC), Immunocytochemistry (ICC)

Product Details

Immunogen:	Purified recombinant fragment of human LDLR (AA: 22-150) expressed in E. coli.
Clone:	1B10H10
Isotype:	IgG1
Purification:	purified

Target Details

Target:	LDLR
Alternative Name:	LDLR (LDLR Products)
Background:	Description: The low density lipoprotein receptor (LDLR) gene family consists of cell surface

Target Details

proteins involved in receptor-mediated endocytosis of specific ligands. Low density lipoprotein (LDL) is normally bound at the cell membrane and taken into the cell ending up in lysosomes where the protein is degraded and the cholesterol is made available for repression of microsomal enzyme 3-hydroxy-3-methylglutaryl coenzyme A (HMG CoA) reductase, the rate-limiting step in cholesterol synthesis. At the same time, a reciprocal stimulation of cholesterol ester synthesis takes place. Mutations in this gene cause the autosomal dominant disorder, familial hypercholesterolemia. Alternate splicing results in multiple transcript variants.r, Aliases: FH, FHC, LDLCQ2

Molecular Weight: 95.4 kDa

Gene ID: 3949

HGNC: 3949

Pathways: [Hepatitis C](#), [Lipid Metabolism](#)

Application Details

Application Notes: ELISA: 1:10000, WB: 1:500 - 1:2000, IHC: 1:200 - 1:1000, ICC: , FCM: 1:200 - 1:400

Restrictions: For Research Use only

Handling

Format: Liquid

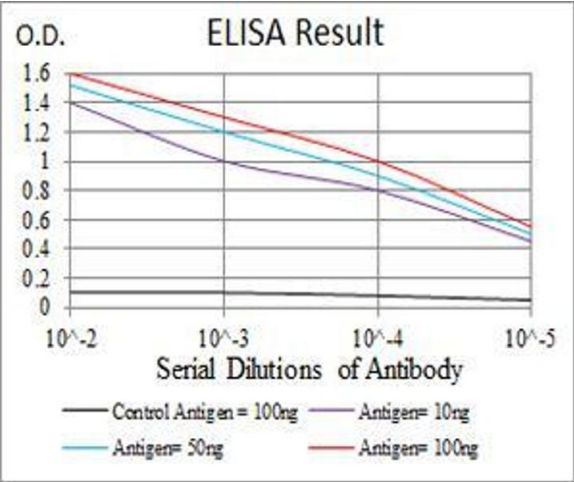
Buffer: Purified antibody in PBS with 0.05 % sodium azide

Preservative: Sodium azide

Precaution of Use: This product contains Sodium azide: a POISONOUS AND HAZARDOUS SUBSTANCE which should be handled by trained staff only.

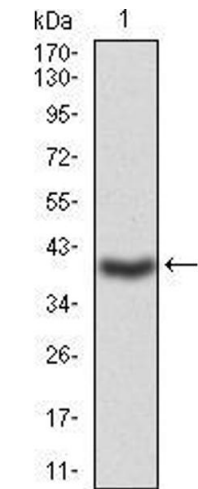
Storage: 4 °C/-20 °C

Storage Comment: 4°C, -20°C for long term storage



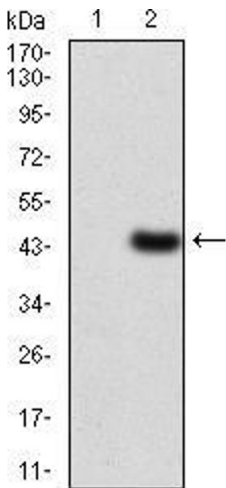
ELISA

Image 1. Black line: Control Antigen (100 ng), Purple line: Antigen(10 ng), Blue line: Antigen (50 ng), Red line: Antigen (100 ng),



Western Blotting

Image 2. Western blot analysis using LDLR mAb against human LDLR (AA: 22-150) recombinant protein. (Expected MW is 40.1 kDa)



Western Blotting

Image 3. Western blot analysis using LDLR mAb against HEK293 (1) and LDLR (AA: 22-150)-hlgGfC transfected HEK293 (2) cell lysate.

Please check the [product details page](#) for more images. Overall 5 images are available for ABIN5542334.