

Datasheet for ABIN5542336

**anti-LHCGR antibody**

## 4 Images

[Go to Product page](#)

## Overview

Quantity:	0.1 mg
Target:	LHCGR
Reactivity:	Human
Host:	Mouse
Clonality:	Monoclonal
Conjugate:	This LHCGR antibody is un-conjugated
Application:	Western Blotting (WB), Flow Cytometry (FACS), ELISA, Immunohistochemistry (IHC), Immunocytochemistry (ICC)

## Product Details

Immunogen:	LHR-29 from ATCC
Clone:	8G9A2
Isotype:	IgG1

## Target Details

Target:	LHCGR
Alternative Name:	LHCGR ( <a href="#">LHCGR Products</a> )
Background:	Description: This gene encodes the receptor for both luteinizing hormone and choriogonadotropin. This receptor belongs to the G-protein coupled receptor 1 family, and its activity is mediated by G proteins which activate adenylate cyclase. Mutations in this gene result in disorders of male secondary sexual character development, including familial male

## Target Details

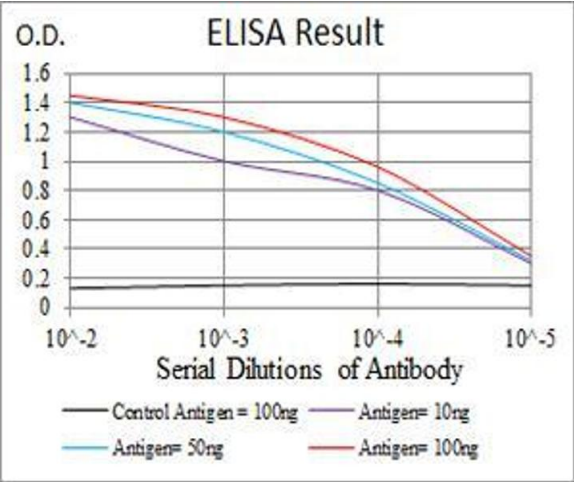
	precocious puberty, also known as testotoxicosis, hypogonadotropic hypogonadism, Leydig cell adenoma with precocious puberty, and male pseudohermaphroditism with Leydig cell hypoplasia. Aliases: HHG, LHR, LCGR, LGR2, ULG5, LHRHR, LSH-R, LH/CGR, LH/CG-R
Molecular Weight:	78.6 kDa
Gene ID:	3973
HGNC:	3973
Pathways:	<a href="#">Regulation of Hormone Metabolic Process</a> , <a href="#">Regulation of Hormone Biosynthetic Process</a> , <a href="#">cAMP Metabolic Process</a> , <a href="#">Glycosaminoglycan Metabolic Process</a> , <a href="#">Regulation of Carbohydrate Metabolic Process</a> , <a href="#">Autophagy</a> , <a href="#">Negative Regulation of intrinsic apoptotic Signaling</a>

## Application Details

Application Notes:	ELISA: 1:10000, WB: 1:500 - 1:2000, IHC: , ICC: 1:200 - 1:1000, FCM: 1:200 - 1:400
Restrictions:	For Research Use only

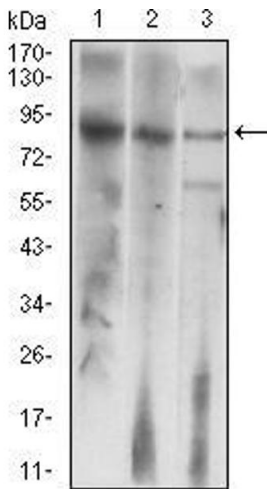
## Handling

Format:	Liquid
Buffer:	Purified antibody in PBS with 0.05 % sodium azide
Preservative:	Sodium azide
Precaution of Use:	This product contains Sodium azide: a POISONOUS AND HAZARDOUS SUBSTANCE which should be handled by trained staff only.
Storage:	4 °C/-20 °C
Storage Comment:	4°C, -20°C for long term storage



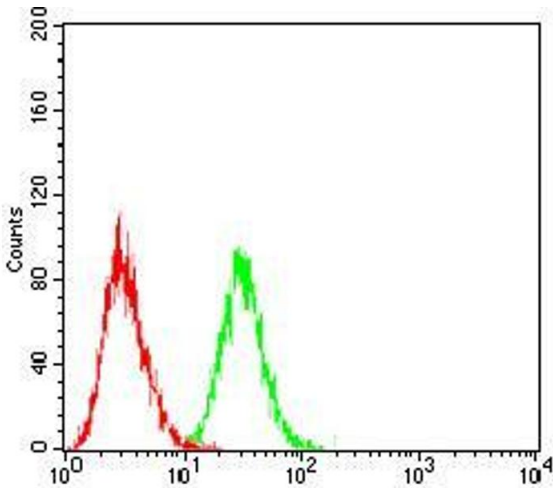
### ELISA

**Image 1.** Black line: Control Antigen (100 ng), Purple line: Antigen(10 ng), Blue line: Antigen (50 ng), Red line: Antigen (100 ng),



### Western Blotting

**Image 2.** Western blot analysis using LHCGR mouse mAb against HepG2 (1), Jurkat (2), and SMMC-7721 (3) cell lysate.



### Flow Cytometry

**Image 3.** Flow cytometric analysis of Jurkat cells using LHCGR mouse mAb (green) and negative control (red).

Please check the [product details page](#) for more images. Overall 4 images are available for ABIN5542336.