



Datasheet for ABIN5542337
anti-Lamin B2 antibody (AA 401-600)



[Go to Product page](#)

10 Images

Overview

| | |
|----------------------|--|
| Quantity: | 0.1 mg |
| Target: | Lamin B2 (LMNB2) |
| Binding Specificity: | AA 401-600 |
| Reactivity: | Human |
| Host: | Mouse |
| Clonality: | Monoclonal |
| Conjugate: | This Lamin B2 antibody is un-conjugated |
| Application: | Western Blotting (WB), Immunohistochemistry (IHC), ELISA, Flow Cytometry (FACS), Immunocytochemistry (ICC) |

Product Details

| | |
|---------------|--|
| Immunogen: | Purified recombinant fragment of human LMNB2 (AA: 401-600) expressed in E. coli. |
| Clone: | 2E2F4 |
| Isotype: | IgG2b |
| Purification: | purified |

Target Details

| | |
|-------------------|--|
| Target: | Lamin B2 (LMNB2) |
| Alternative Name: | LMNB2 (LMNB2 Products) |
| Background: | Description: This gene encodes a B type nuclear lamin. The nuclear lamina consists of a two- |

Target Details

dimensional matrix of proteins located next to the inner nuclear membrane. The lamin family of proteins make up the matrix and are highly conserved in evolution. During mitosis, the lamina matrix is reversibly disassembled as the lamin proteins are phosphorylated. Lamin proteins are thought to be involved in nuclear stability, chromatin structure and gene expression. Vertebrate lamins consist of two types, A and B. Mutations in this gene are associated with acquired partial lipodystrophy.,

Aliases: LMN2, LAMB2

Molecular Weight: 67.7 kDa

Gene ID: 84823

HGNC: 84823

Pathways: [Apoptosis, Caspase Cascade in Apoptosis](#)

Application Details

Application Notes: ELISA: 1:10000, WB: 1:500 - 1:2000, IHC: 1:200 - 1:1000, ICC: 1:200 - 1:1000, FCM: 1:200 - 1:400

Restrictions: For Research Use only

Handling

Format: Liquid

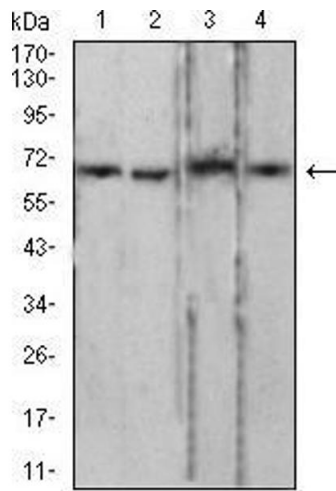
Buffer: Purified antibody in PBS with 0.05 % sodium azide

Preservative: Sodium azide

Precaution of Use: This product contains Sodium azide: a POISONOUS AND HAZARDOUS SUBSTANCE which should be handled by trained staff only.

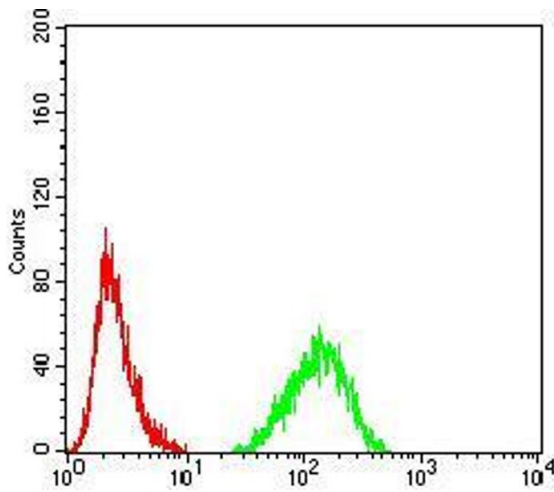
Storage: 4 °C/-20 °C

Storage Comment: 4°C, -20°C for long term storage



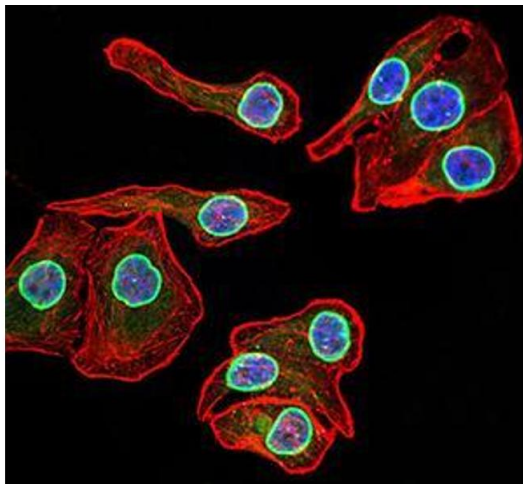
Western Blotting

Image 1. Western blot analysis using LMNB2 mouse mAb against PC-3 (1), LNcap (2), Jurkat (3), and HCT116 (4) cell lysate.



Flow Cytometry

Image 2. Flow cytometric analysis of HeLa cells using LMNB2 mouse mAb (green) and negative control (red).



Immunocytochemistry

Image 3. Immunofluorescence analysis of GC-7901 cells using LMNB2 mouse mAb (green). Blue: DRAQ5 fluorescent DNA dye. Red: Actin filaments have been labeled with Alexa Fluor-555 phalloidin. Secondary antibody from Fisher

Please check the [product details page](#) for more images. Overall 10 images are available for ABIN5542337.