

Datasheet for ABIN5542338
anti-HLA-B antibody (AA 241-362)



[Go to Product page](#)

9 Images

Overview

| | |
|----------------------|--|
| Quantity: | 100 µL |
| Target: | HLA-B |
| Binding Specificity: | AA 241-362 |
| Reactivity: | Human |
| Host: | Mouse |
| Clonality: | Monoclonal |
| Conjugate: | This HLA-B antibody is un-conjugated |
| Application: | Western Blotting (WB), ELISA, Flow Cytometry (FACS), Immunohistochemistry (IHC), Immunocytochemistry (ICC) |

Product Details

| | |
|---------------|--|
| Purpose: | HLA-B Antibody |
| Immunogen: | Purified recombinant fragment of human HLA-B (AA: 241-362) expressed in E. Coli. |
| Clone: | 2G7B10 |
| Isotype: | IgG1 |
| Purification: | Purified antibody |

Target Details

| | |
|-------------------|--|
| Target: | HLA-B |
| Alternative Name: | HLA-B (HLA-B Products) |

Target Details

Background: Description: HLA-B belongs to the HLA class I heavy chain paralogues. This class I molecule is a heterodimer consisting of a heavy chain and a light chain (beta-2 microglobulin). The heavy chain is anchored in the membrane. Class I molecules play a central role in the immune system by presenting peptides derived from the endoplasmic reticulum lumen. They are expressed in nearly all cells. The heavy chain is approximately 45 kDa and its gene contains 8 exons. Exon 1 encodes the leader peptide, exon 2 and 3 encode the alpha1 and alpha2 domains, which both bind the peptide, exon 4 encodes the alpha3 domain, exon 5 encodes the transmembrane region and exons 6 and 7 encode the cytoplasmic tail. Polymorphisms within exon 2 and exon 3 are responsible for the peptide binding specificity of each class one molecule. Typing for these polymorphisms is routinely done for bone marrow and kidney transplantation. Hundreds of HLA-B alleles have been described.

Aliases: AS, HLAB, Bw-47, Bw-50, SPDA1, B-4901, B-5001, HLA-Cw,

Molecular Weight: 40.5kDa

Gene ID: 3106

HGNC: 4286

Pathways: [Regulation of Leukocyte Mediated Immunity](#), [Positive Regulation of Immune Effector Process](#), [Cancer Immune Checkpoints](#), [Human Leukocyte Antigen \(HLA\) in Adaptive Immune Response](#)

Application Details

Application Notes: ELISA: 1/10000
FCM: 1/200 - 1/400
ICC: 1/200 - 1/1000

Restrictions: For Research Use only

Handling

Format: Liquid

Buffer: Purified antibody in PBS with 0.05 % sodium azide.

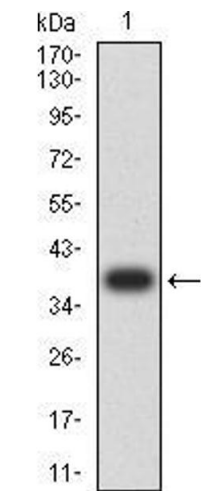
Preservative: Sodium azide

Precaution of Use: This product contains Sodium azide: a POISONOUS AND HAZARDOUS SUBSTANCE which should be handled by trained staff only.

Storage: 4 °C, -20 °C

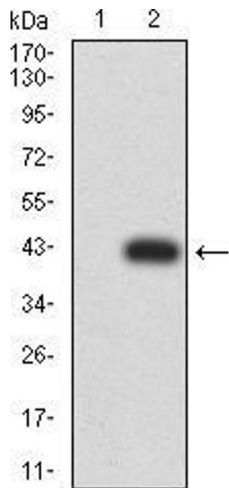
Storage Comment: Store at 4°C short term. Aliquot and store at -20°C long term. Avoid freeze/thaw cycles.

Images



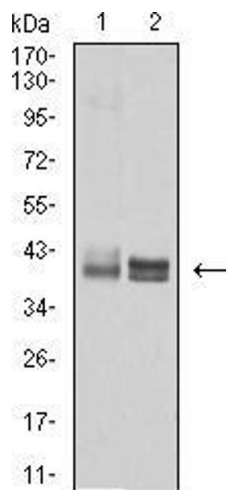
Western Blotting

Image 1. Western blot analysis using HLA-B mAb against human HLA-B (AA: 241-362) recombinant protein. (Expected MW is 38.4 kDa)



Western Blotting

Image 2. Western blot analysis using HLA-B mAb against HEK293 (1) and HLA-B (AA: 241-362)-hlgGfc transfected HEK293 (2) cell lysate.



Western Blotting

Image 3. Western blot analysis using HLA-B mouse mAb against Ramos (1) and A431 (2) cell lysate.

Please check the [product details page](#) for more images. Overall 9 images are available for ABIN5542338.