

Datasheet for ABIN5542342
anti-RAB8A antibody (AA 68-207)[Go to Product page](#)

4 Images

Overview

Quantity:	0.1 mg
Target:	RAB8A
Binding Specificity:	AA 68-207
Reactivity:	Human
Host:	Mouse
Clonality:	Monoclonal
Conjugate:	This RAB8A antibody is un-conjugated
Application:	Western Blotting (WB), ELISA, Immunohistochemistry (IHC), Flow Cytometry (FACS), Immunocytochemistry (ICC)

Product Details

Immunogen:	Purified recombinant fragment of human Rab8 (AA: 68-207) expressed in E. coli.
Clone:	7G8B11
Isotype:	IgG2b
Purification:	purified

Target Details

Target:	RAB8A
Alternative Name:	Rab8 (RAB8A Products)
Background:	Description: The protein encoded by this gene is a member of the RAS superfamily which are

Target Details

small GTP/GDP-binding proteins with an average size of 200 amino acids. The RAS-related proteins of the RAB/YPT family may play a role in the transport of proteins from the endoplasmic reticulum to the Golgi and the plasma membrane. This protein shares 97 % , 96 % , and 51 % similarity with the dog RAB8, mouse MEL, and mouse YPT1 proteins, respectively and contains the 4 GTP/GDP-binding sites that are present in all the RAS proteins. The putative effector-binding site of this protein is similar to that of the RAB/YPT proteins. However, this protein contains a C-terminal CAAX motif that is characteristic of many RAS superfamily members but which is not found in YPT1 and the majority of RAB proteins. Although this gene was isolated as a transforming gene from a melanoma cell line, no linkage between MEL and malignant melanoma has been demonstrable. This oncogene is located 800 kb distal to MY09B on chromosome 19p13.1.,

Aliases: MEL, RAB8A

Molecular Weight:	23.7 kDa
-------------------	----------

Gene ID:	4218
----------	------

HGNC:	4218
-------	------

Pathways:	M Phase , Regulation of long-term Neuronal Synaptic Plasticity , SARS-CoV-2 Protein Interactome
-----------	---

Application Details

Application Notes:	ELISA: 1:10000, WB: 1:500 - 1:2000, IHC: , ICC: , FCM: 1:200 - 1:400
--------------------	--

Restrictions:	For Research Use only
---------------	-----------------------

Handling

Format:	Liquid
---------	--------

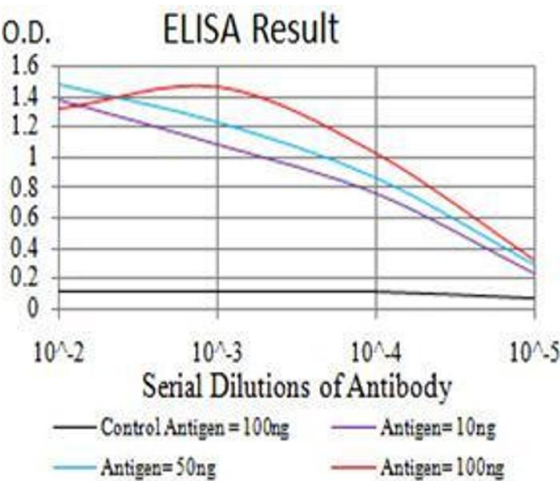
Buffer:	Purified antibody in PBS with 0.05 % sodium azide
---------	---

Preservative:	Sodium azide
---------------	--------------

Precaution of Use:	This product contains Sodium azide: a POISONOUS AND HAZARDOUS SUBSTANCE which should be handled by trained staff only.
--------------------	--

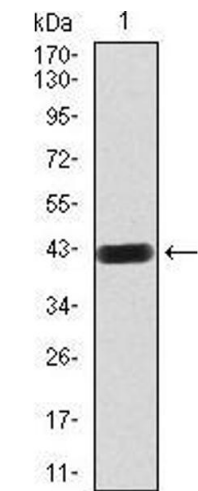
Storage:	4 °C/-20 °C
----------	-------------

Storage Comment:	4°C, -20°C for long term storage
------------------	----------------------------------



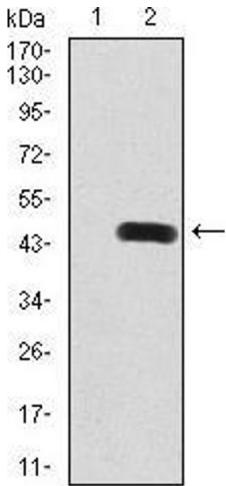
ELISA

Image 1. Black line: Control Antigen (100 ng), Purple line: Antigen(10 ng), Blue line: Antigen (50 ng), Red line: Antigen (100 ng),



Western Blotting

Image 2. Western blot analysis using Rab8 mAb against human Rab8 (AA: 68-207) recombinant protein. (Expected MW is 42 kDa)



Western Blotting

Image 3. Western blot analysis using Rab8 mAb against HEK293 (1) and Rab8 (AA: 68-207)-hlgGfc transfected HEK293 (2) cell lysate.

Please check the [product details page](#) for more images. Overall 4 images are available for ABIN5542342.