



[Go to Product page](#)

Datasheet for ABIN5542349
anti-RAB13 antibody (AA 66-200)

5 Images

Overview

Quantity:	0.1 mg
Target:	RAB13
Binding Specificity:	AA 66-200
Reactivity:	Human
Host:	Mouse
Clonality:	Monoclonal
Conjugate:	This RAB13 antibody is un-conjugated
Application:	Western Blotting (WB), ELISA, Immunohistochemistry (IHC), Flow Cytometry (FACS), Immunocytochemistry (ICC)

Product Details

Immunogen:	Purified recombinant fragment of human Rab13 (AA: 66-200) expressed in E. coli.
Clone:	8E8E2
Isotype:	IgG1
Purification:	purified

Target Details

Target:	RAB13
Alternative Name:	Rab13 (RAB13 Products)
Background:	Description: This gene is a member of the Rab family of small G proteins and plays a role in

Target Details

regulating membrane trafficking between trans-Golgi network (TGN) and recycling endosomes (RE). The encoded protein is involved in the assembly of tight junctions, which are components of the apical junctional complex (AJC) of epithelial cells. The AJC plays a role in forming a barrier between luminal contents and the underlying tissue. Additional functions associated with the protein include endocytic recycling of occludin, regulation of epithelial cell scattering, neuronal regeneration and regulation of neurite outgrowth. Alternately spliced transcript variants have been observed for this gene. A pseudogene associated with this gene is located on chromosome 12. ,

Aliases: GIG4

Molecular Weight: 22.8 kDa

Gene ID: 5872

HGNC: 5872

Pathways: [Cell-Cell Junction Organization](#)

Application Details

Application Notes: ELISA: 1:10000, WB: 1:500 - 1:2000, IHC: , ICC: 1:200 - 1:1000, FCM: 1:200 - 1:400

Restrictions: For Research Use only

Handling

Format: Liquid

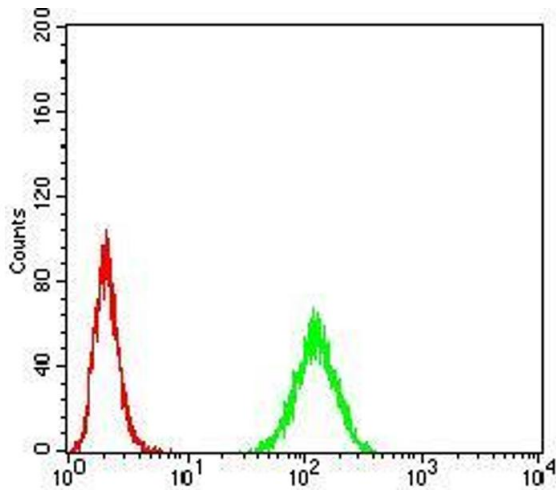
Buffer: Purified antibody in PBS with 0.05 % sodium azide

Preservative: Sodium azide

Precaution of Use: This product contains Sodium azide: a POISONOUS AND HAZARDOUS SUBSTANCE which should be handled by trained staff only.

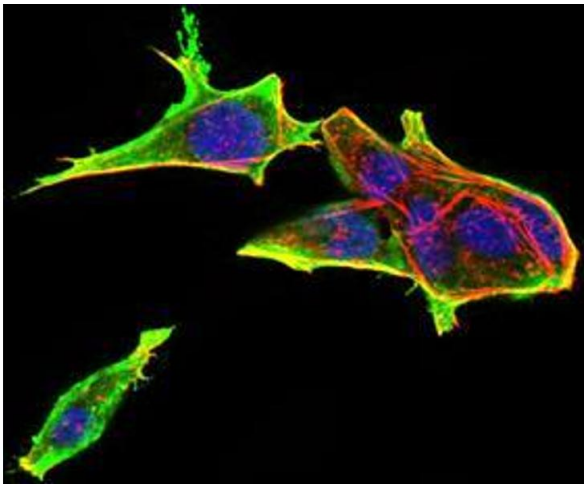
Storage: 4 °C/-20 °C

Storage Comment: 4°C, -20°C for long term storage



Flow Cytometry

Image 1. Flow cytometric analysis of HeLa cells using Rab13 mouse mAb (green) and negative control (red).



Immunofluorescence

Image 2. Immunofluorescence analysis of HeLa cells using Rab13 mouse mAb (green). Blue: DRAQ5 fluorescent DNA dye. Red: Actin filaments have been labeled with Alexa Fluor-555 phalloidin. Secondary antibody from Fisher (Cat#: 35503)



ELISA

Image 3. Black line: Control Antigen (100 ng), Purple line: Antigen(10 ng), Blue line: Antigen (50 ng), Red line: Antigen (100 ng),

Please check the [product details page](#) for more images. Overall 5 images are available for ABIN5542349.