

Datasheet for ABIN5542350
anti-RAB13 antibody (AA 66-200)



[Go to Product page](#)

7 Images

Overview

Quantity:	100 µL
Target:	RAB13
Binding Specificity:	AA 66-200
Reactivity:	Human
Host:	Mouse
Clonality:	Monoclonal
Conjugate:	This RAB13 antibody is un-conjugated
Application:	ELISA, Immunohistochemistry (IHC), Flow Cytometry (FACS), Immunocytochemistry (ICC)

Product Details

Purpose:	Rab13 Antibody
Immunogen:	Purified recombinant fragment of human Rab13 (AA: 66-200) expressed in E. Coli.
Clone:	7G8A4
Isotype:	IgG1
Purification:	Purified antibody

Target Details

Target:	RAB13
Alternative Name:	Rab13 (RAB13 Products)
Background:	Description: This gene is a member of the Rab family of small G proteins and plays a role in

Target Details

regulating membrane trafficking between trans-Golgi network (TGN) and recycling endosomes (RE). The encoded protein is involved in the assembly of tight junctions, which are components of the apical junctional complex (AJC) of epithelial cells. The AJC plays a role in forming a barrier between luminal contents and the underlying tissue. Additional functions associated with the protein include endocytic recycling of occludin, regulation of epithelial cell scattering, neuronal regeneration and regulation of neurite outgrowth. Alternately spliced transcript variants have been observed for this gene. A pseudogene associated with this gene is located on chromosome 12.

Aliases: GIG4

Molecular Weight: 22.8kDa

Gene ID: 5872

HGNC: 5872

UniProt: [P51153](#)

Pathways: [Cell-Cell Junction Organization](#)

Application Details

Application Notes: ELISA: 1/10000
FCM: 1/200 - 1/400
ICC: 1/200 - 1/1000

Restrictions: For Research Use only

Handling

Format: Liquid

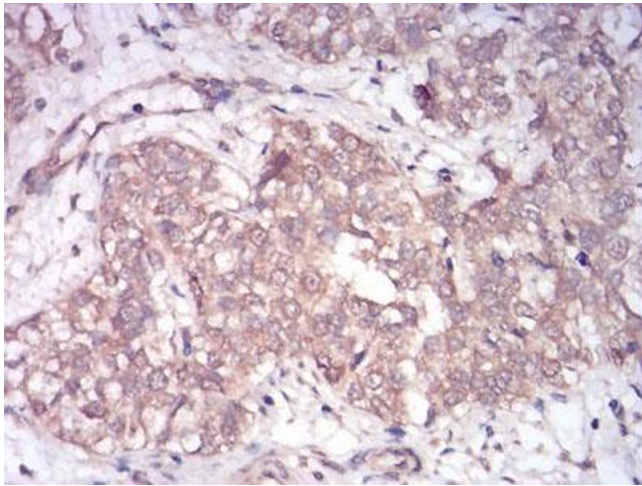
Buffer: Purified antibody in PBS with 0.05 % sodium azide.

Preservative: Sodium azide

Precaution of Use: This product contains Sodium azide: a POISONOUS AND HAZARDOUS SUBSTANCE which should be handled by trained staff only.

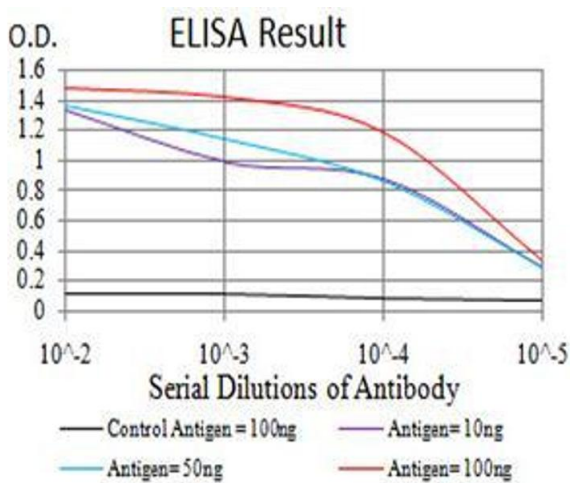
Storage: 4 °C, -20 °C

Storage Comment: Store at 4°C short term. Aliquot and store at -20°C long term. Avoid freeze/thaw cycles.



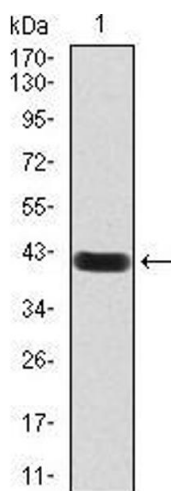
Immunohistochemistry

Image 1. Immunohistochemical analysis of paraffin-embedded bladder cancer tissues using Rab13 mouse mAb with DAB staining.



ELISA

Image 2. Black line: Control Antigen (100 ng), Purple line: Antigen(10 ng), Blue line: Antigen (50 ng), Red line: Antigen (100 ng),



Western Blotting

Image 3. Western blot analysis using Rab13 mAb against human Rab13 (AA: 66-200) recombinant protein. (Expected MW is 41.1 kDa)

Please check the [product details page](#) for more images. Overall 7 images are available for ABIN5542350.