



[Go to Product page](#)

Datasheet for ABIN5542363
anti-SHP1 antibody (AA 243-541)

5 Images

Overview

Quantity:	0.1 mg
Target:	SHP1 (PTPN6)
Binding Specificity:	AA 243-541
Reactivity:	Human
Host:	Mouse
Clonality:	Monoclonal
Conjugate:	This SHP1 antibody is un-conjugated
Application:	Western Blotting (WB), ELISA, Immunohistochemistry (IHC), Immunocytochemistry (ICC), Flow Cytometry (FACS)

Product Details

Immunogen:	Purified recombinant fragment of human PTPN6 (AA: 243-541) expressed in E. coli.
Clone:	2E9E4
Isotype:	IgG1
Purification:	purified

Target Details

Target:	SHP1 (PTPN6)
Alternative Name:	PTPN6 (PTPN6 Products)
Background:	Description: The protein encoded by this gene is a member of the protein tyrosine phosphatase

Target Details

(PTP) family. PTPs are known to be signaling molecules that regulate a variety of cellular processes including cell growth, differentiation, mitotic cycle, and oncogenic transformation. N-terminal part of this PTP contains two tandem Src homolog (SH2) domains, which act as protein phospho-tyrosine binding domains, and mediate the interaction of this PTP with its substrates. This PTP is expressed primarily in hematopoietic cells, and functions as an important regulator of multiple signaling pathways in hematopoietic cells. This PTP has been shown to interact with, and dephosphorylate a wide spectrum of phospho-proteins involved in hematopoietic cell signaling. Multiple alternatively spliced variants of this gene, which encode distinct isoforms, have been reported.,

Aliases: HCP, HCPH, SHP1, SHP-1, HPTP1C, PTP-1C, SHP-1L, SH-PTP1

Molecular Weight: 67.6 kDa

Gene ID: 5777

HGNC: 5777

Pathways: [JAK-STAT Signaling](#), [TCR Signaling](#), [TLR Signaling](#), [Nuclear Receptor Transcription Pathway](#), [Positive Regulation of Peptide Hormone Secretion](#), [Steroid Hormone Mediated Signaling Pathway](#), [Response to Growth Hormone Stimulus](#), [Regulation of Leukocyte Mediated Immunity](#), [CXCR4-mediated Signaling Events](#), [Signaling Events mediated by VEGFR1 and VEGFR2](#), [BCR Signaling](#)

Application Details

Application Notes: ELISA: 1:10000, WB: 1:500 - 1:2000, IHC: , ICC: 1:200 - 1:1000, FCM: 1:200 - 1:400

Restrictions: For Research Use only

Handling

Format: Liquid

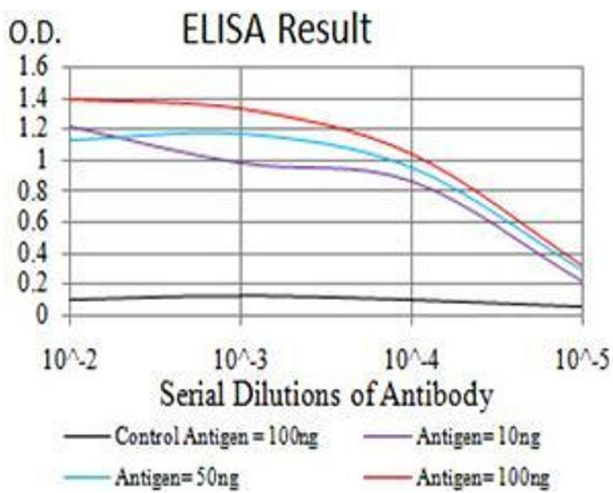
Buffer: Purified antibody in PBS with 0.05 % sodium azide

Preservative: Sodium azide

Precaution of Use: This product contains Sodium azide: a POISONOUS AND HAZARDOUS SUBSTANCE which should be handled by trained staff only.

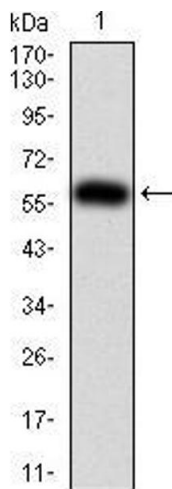
Storage: 4 °C/-20 °C

Storage Comment: 4°C, -20°C for long term storage



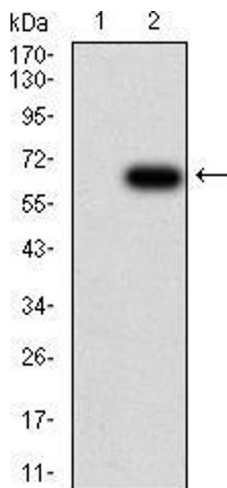
ELISA

Image 1. Black line: Control Antigen (100 ng), Purple line: Antigen (10 ng), Blue line: Antigen (50 ng), Red line: Antigen (100 ng)



Western Blotting

Image 2. Western blot analysis using PTPN6 mAb against human PTPN6 (AA: 243-541) recombinant protein. (Expected MW is 60 kDa)



Western Blotting

Image 3. Western blot analysis using PTPN6 mAb against HEK293 (1) and PTPN6 (AA: 243-541)-hlgGfC transfected HEK293 (2) cell lysate.

Please check the [product details page](#) for more images. Overall 5 images are available for ABIN5542363.