

Datasheet for ABIN5542386
anti-rala antibody (AA 71-203)



[Go to Product page](#)

8 Images

Overview

Quantity:	100 µL
Target:	rala
Binding Specificity:	AA 71-203
Reactivity:	Human
Host:	Mouse
Clonality:	Monoclonal
Conjugate:	This rala antibody is un-conjugated
Application:	Western Blotting (WB), ELISA, Immunohistochemistry (IHC), Immunocytochemistry (ICC), Flow Cytometry (FACS)

Product Details

Purpose:	RALA Antibody
Immunogen:	Purified recombinant fragment of human RALA (AA: 71-203) expressed in E. Coli.
Clone:	4G8C7
Isotype:	IgG1
Purification:	Purified antibody

Target Details

Target:	rala
Alternative Name:	RALA (rala Products)

Target Details

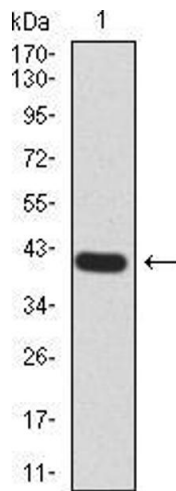
Background:	Description: The product of this gene belongs to the small GTPase superfamily, Ras family of proteins. GTP-binding proteins mediate the transmembrane signaling initiated by the occupancy of certain cell surface receptors. This gene encodes a low molecular mass ras-like GTP-binding protein that shares about 50 % similarity with other ras proteins. Aliases: RAL
Molecular Weight:	23.6kDa
Gene ID:	5898
HGNC:	5898
UniProt:	P11233
Pathways:	Neurotrophin Signaling Pathway , SARS-CoV-2 Protein Interactome

Application Details

Application Notes:	ELISA: 1/10000 FCM: 1/200 - 1/400 ICC: 1/200 - 1/1000
Restrictions:	For Research Use only

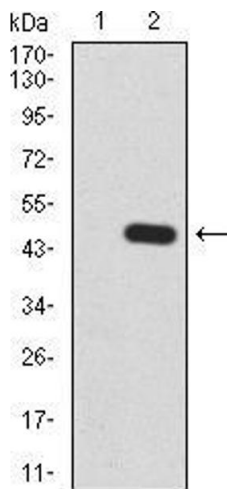
Handling

Format:	Liquid
Buffer:	Purified antibody in PBS with 0.05 % sodium azide.
Preservative:	Sodium azide
Precaution of Use:	This product contains Sodium azide: a POISONOUS AND HAZARDOUS SUBSTANCE which should be handled by trained staff only.
Storage:	4 °C,-20 °C
Storage Comment:	Store at 4°C short term. Aliquot and store at -20°C long term. Avoid freeze/thaw cycles.



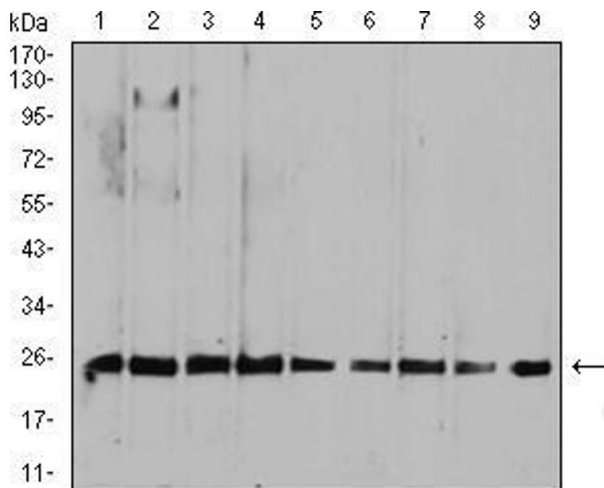
Western Blotting

Image 1. Western blot analysis using RALA mAb against human RALA (AA: 71-203) recombinant protein. (Expected MW is 41.5 kDa)



Western Blotting

Image 2. Western blot analysis using RALA mAb against HEK293 (1) and RALA (AA: 71-203)-hlgGfc transfected HEK293 (2) cell lysate.



Western Blotting

Image 3. Western blot analysis using RALA mouse mAb against HepG2 (1), MCF-7 (2), A549 (3), K562 (4), Raji (5), MOLT4 (6), HeLa (7), COS7 (8), and NIH3T3 (9) cell lysate.

Please check the [product details page](#) for more images. Overall 8 images are available for ABIN5542386.